

UNIT TYPE:

SUITE AREA:

OUTDOOR AREA:

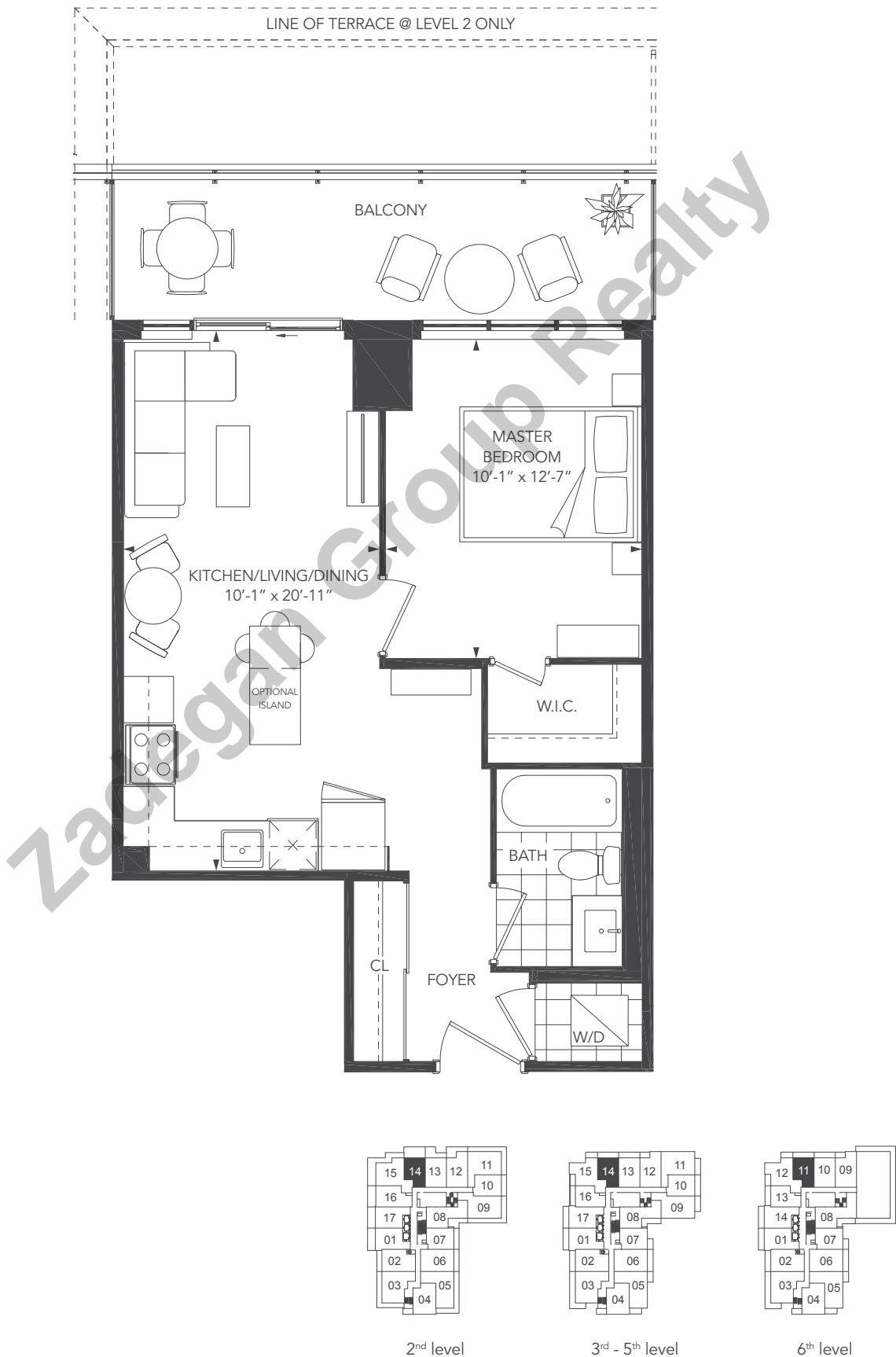
TOTAL AREA:

1 BEDROOM/1A

568 sq.ft.

LEVEL 2: 237 sq.ft. LEVEL 3-6: 124 sq.ft.

LEVEL 2: 805 sq.ft. LEVEL 3-6: 692 sq.ft.



Note: Without limiting the generality of the terms and conditions of the agreement of purchase and sale, Purchasers are advised that all prices, figures, sizes, plans, specifications and information, including without limitation the size, location, design and layout of windows, doors, walls, fixtures, closets, structures, appliances (if any), and the balcony are subject to change without notice to the Purchaser in order to comply with site conditions, municipal or governmental, structural, or architectural requirements, or for any reason at the sole, unfettered and absolute discretion of the Vendor. Units on lower floors may have less floor space due to thicker structural members, mechanical rooms, etc. while units on higher floors may have more floorspace. Bulkheads may not be shown on this plan and may be located in areas of the Unit as required for venting and mechanical systems. All areas and stated dimensions are approximate. Actual usable floor space, living area and square footage may vary from stated floor area. All illustrations are artist's concept only. Furniture is depicted for illustration purposes only & are not included. The unit shown may be the reverse of the unit purchased. The exact location of any balcony (if applicable) in relation to the unit layout may differ from that shown. The locations of the building and units shown are approximate only and are subject to change without notice to the Purchaser. E. & O.E. 10.08.19

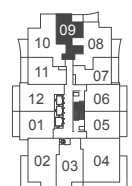
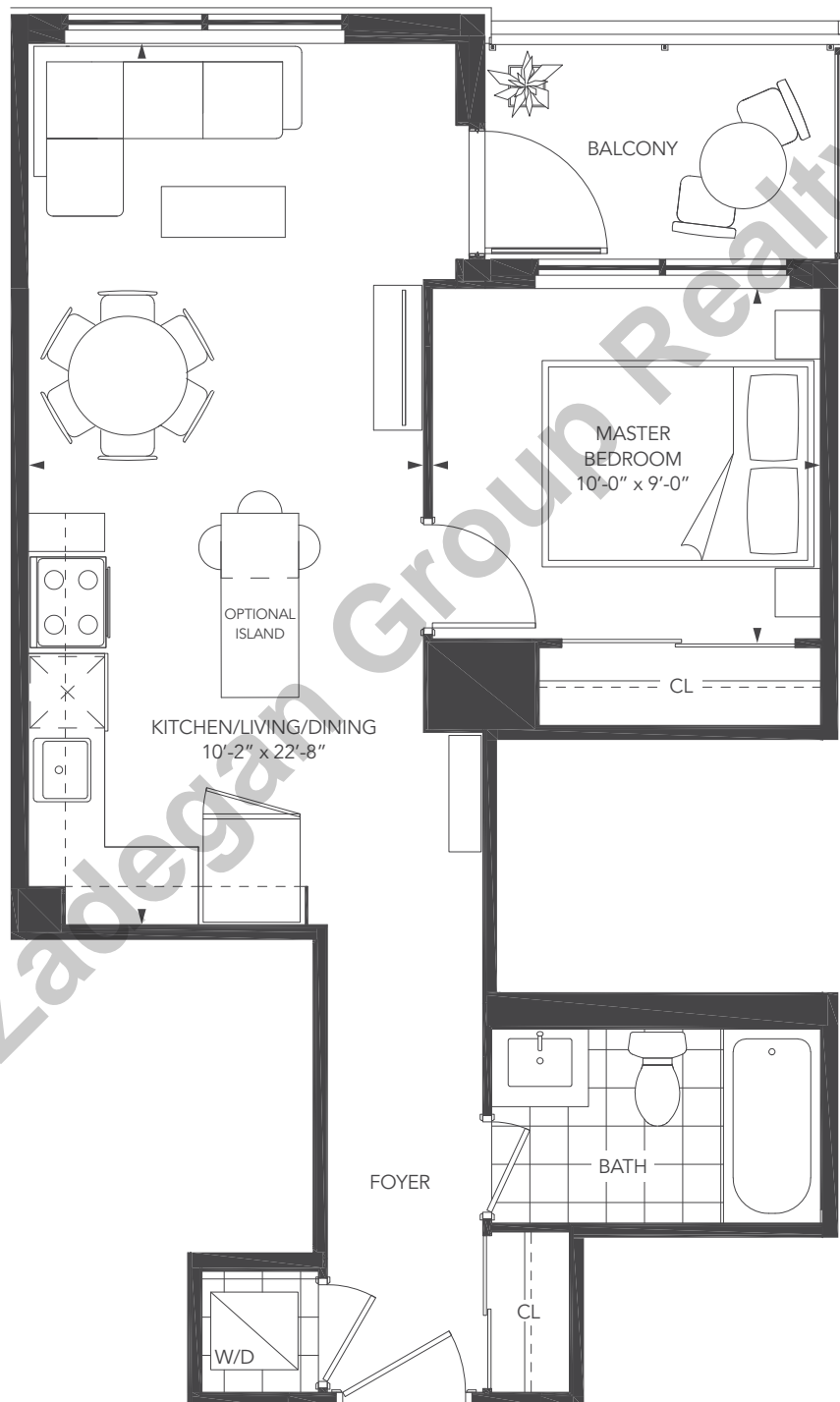


UNIVERSAL CITY

CONDOMINIUMS

UNIVERSAL CITY THREE - 1B

UNIT TYPE: 1 BEDROOM/1B
SUITE AREA: 548 sq.ft.
OUTDOOR AREA: 53 sq.ft.
TOTAL AREA: 601 sq.ft.



8th - 28th level



UNIVERSAL CITY THREE - 1C (BF)

UNIT TYPE:

SUITE AREA:

OUTDOOR AREA:

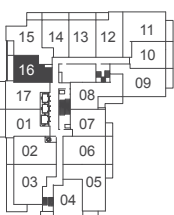
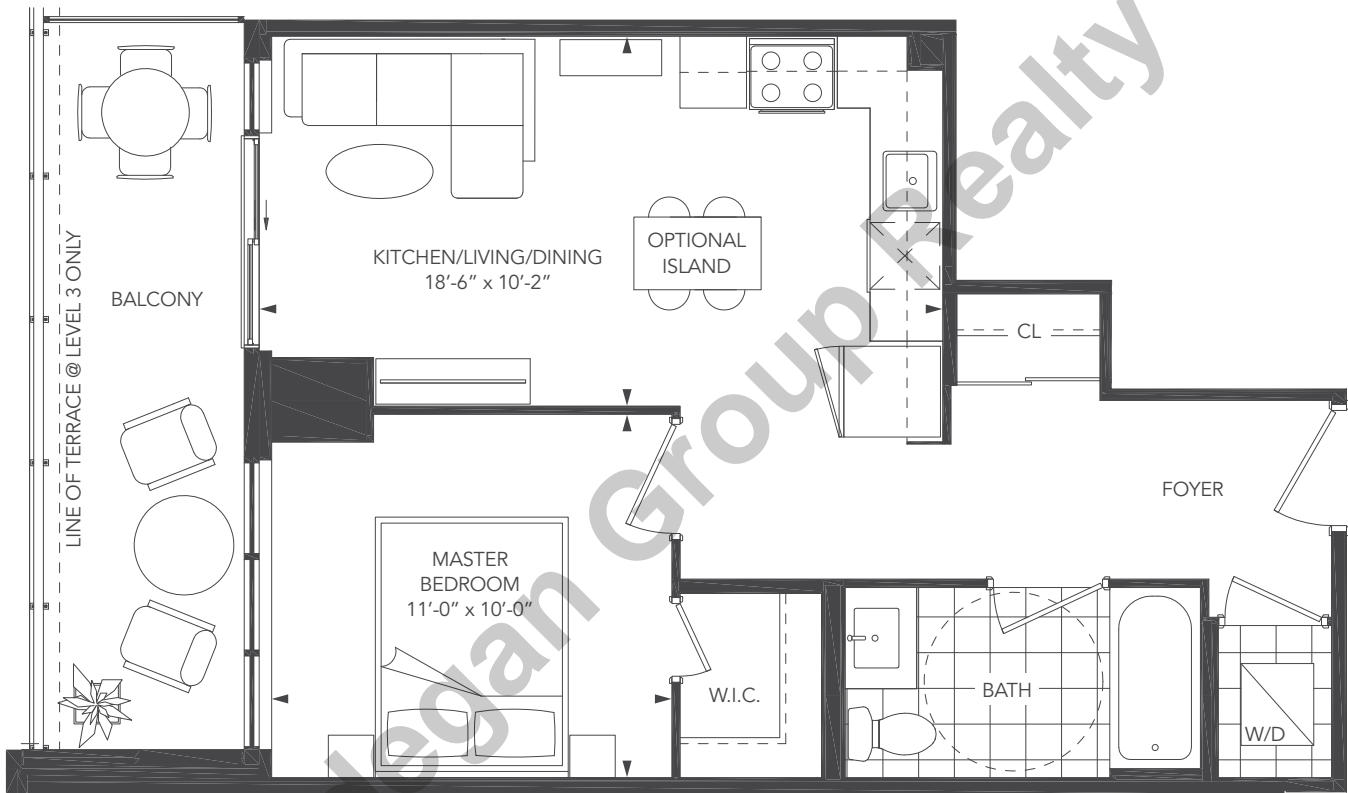
TOTAL AREA:

1 BEDROOM/1C

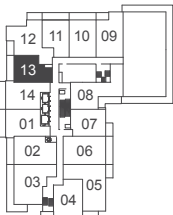
560 sq.ft.

LEVEL 3: 102 sq.ft. LEVEL 4-28: 116 sq.ft.

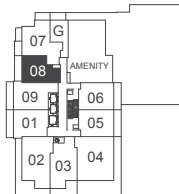
LEVEL 3: 662 sq.ft. LEVEL 4-28: 676 sq.ft.



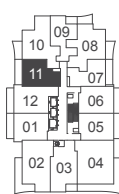
3rd - 5th level



6th level



7th level

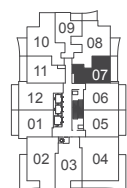
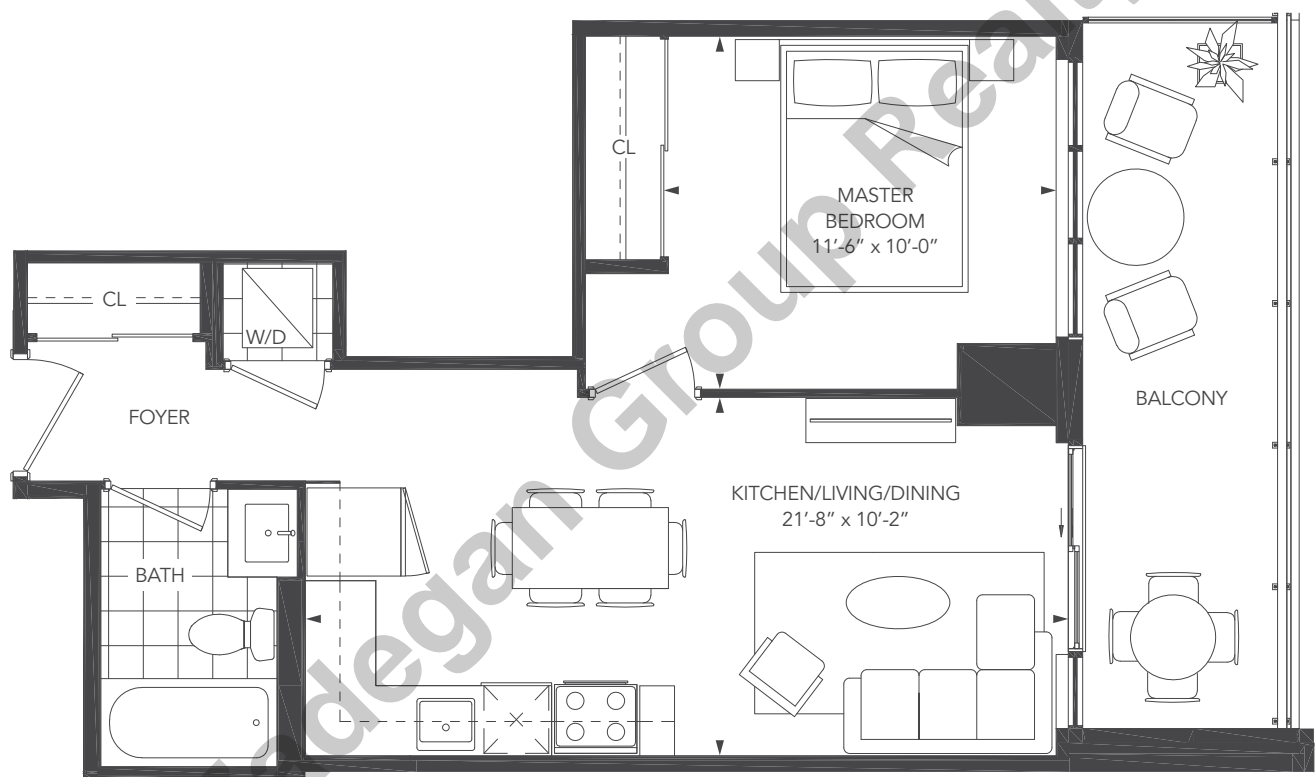


8th - 28th level



UNIVERSAL CITY THREE - 1D

UNIT TYPE: 1 BEDROOM/1D
SUITE AREA: 516 sq.ft.
OUTDOOR AREA: 116 sq.ft.
TOTAL AREA: 632 sq.ft.

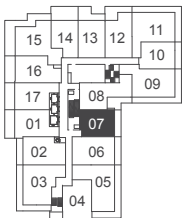
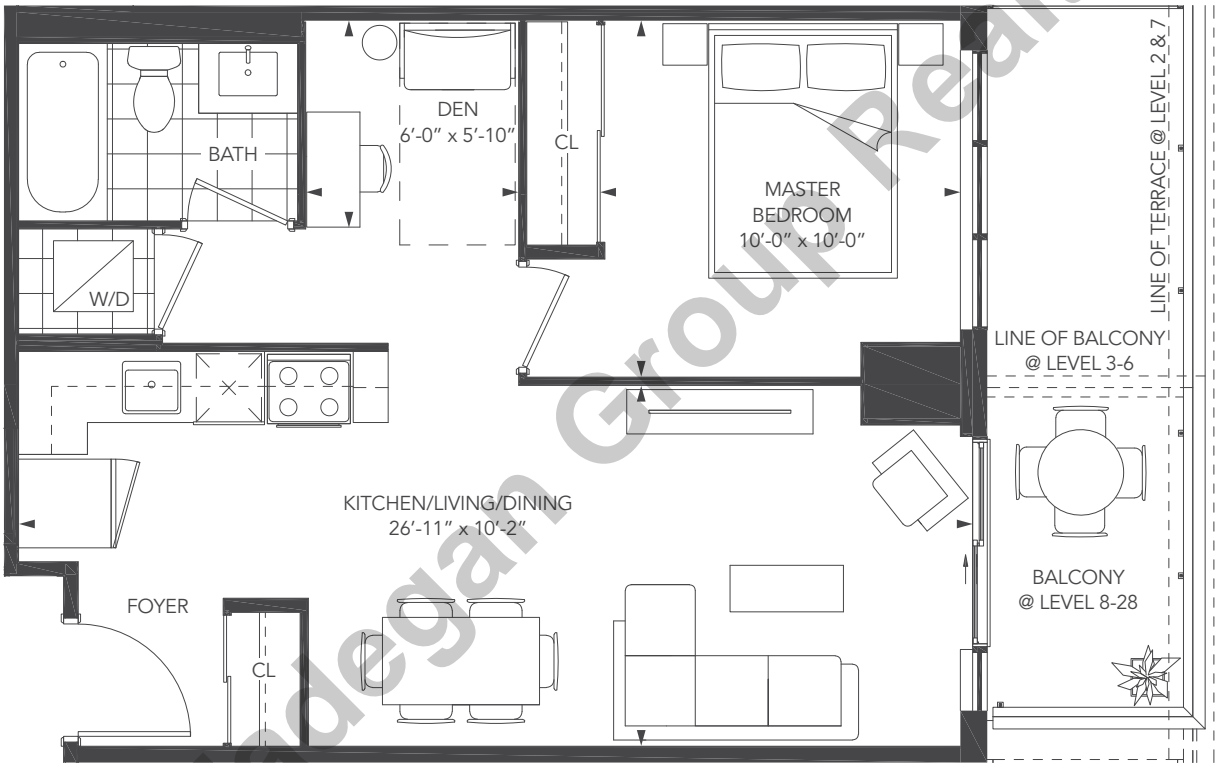


8th - 28th level

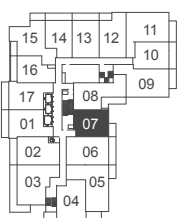


UNIVERSAL CITY THREE - 1A+D

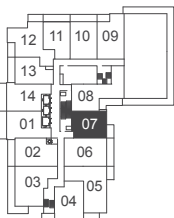
UNIT TYPE:	1 BEDROOM+DEN/1A+D			
SUITE AREA:	589 sq.ft.			
OUTDOOR AREA:	LEVEL 2: 109 sq.ft.	LEVEL 3-6: 61 sq.ft.	LEVEL 7: 126 sq.ft. (Unit 05) LEVEL 7: 109 sq.ft. (Unit 06)	LEVEL 8-28: 116 sq.ft.
TOTAL AREA:	LEVEL 2: 698 sq.ft.	LEVEL 3-6: 650 sq.ft.	LEVEL 7: 715 sq.ft. (Unit 05) LEVEL 7: 698 sq.ft. (Unit 06)	LEVEL 8-28: 705 sq.ft.



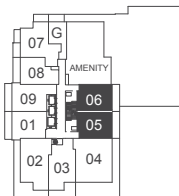
2nd level



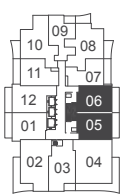
3rd - 5th level



6th level



7th level



8th - 28th level



UNIVERSAL CITY THREE - 1B+D (BF)

UNIT TYPE:

SUITE AREA:

OUTDOOR AREA:

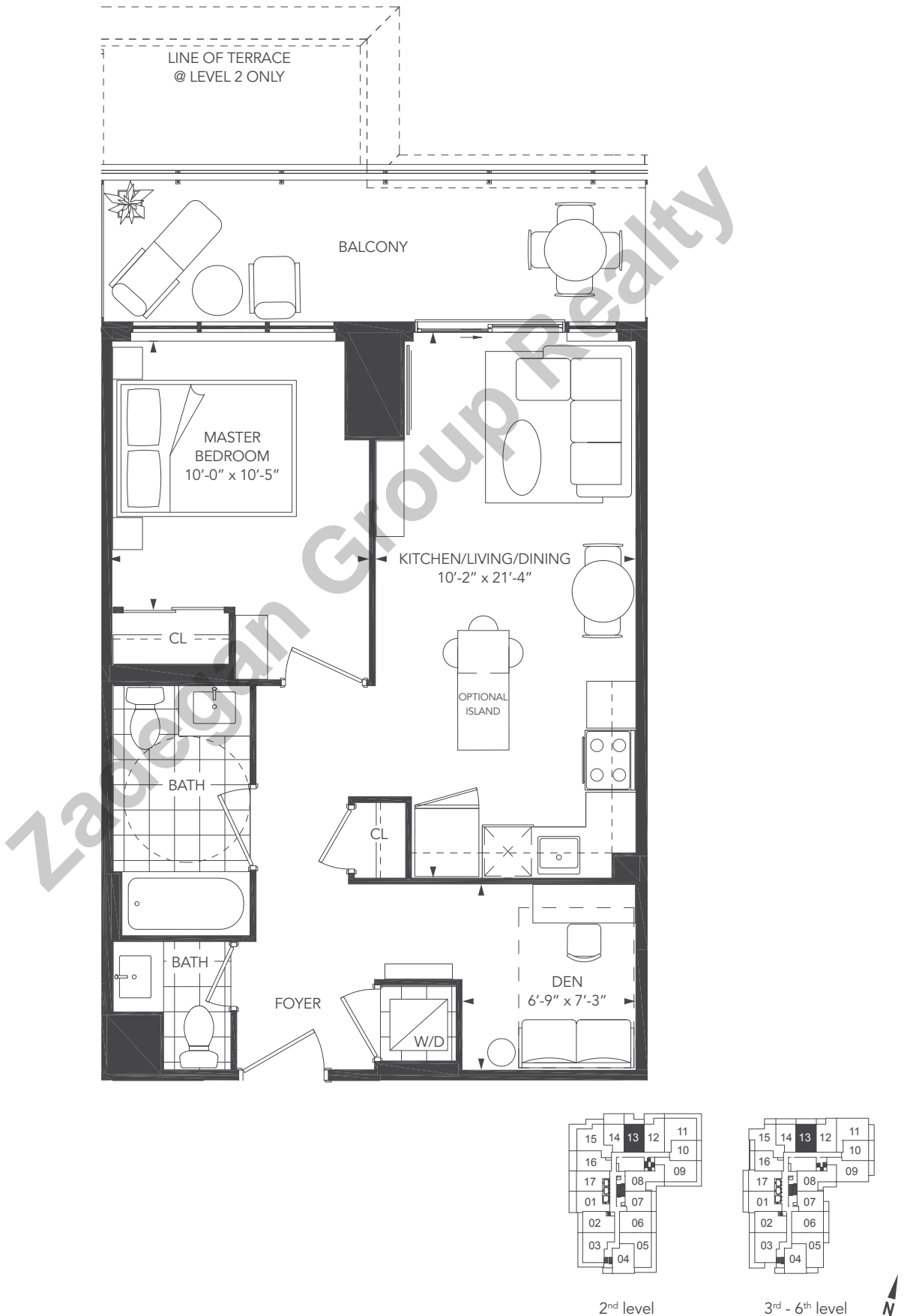
TOTAL AREA:

1 BEDROOM+DEN/1B+D

637 sq.ft.

LEVEL 2: 171 sq.ft. LEVEL 3-6: 124 sq.ft.

LEVEL 2: 808 sq.ft. LEVEL 3-6: 761 sq.ft.



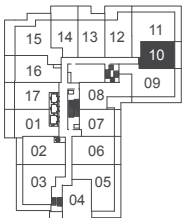
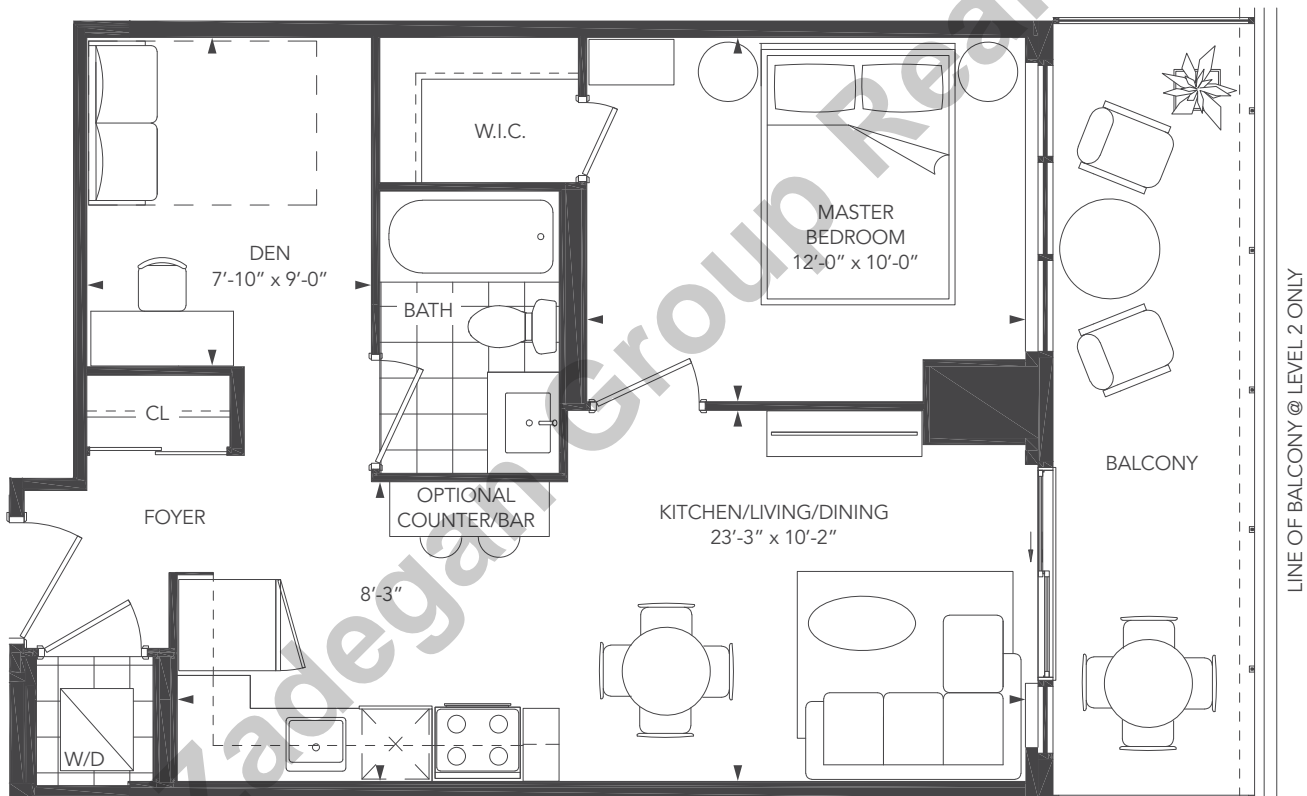
UNIVERSAL CITY THREE - 1C+D

UNIT TYPE:1 BEDROOM + DEN/1C+D

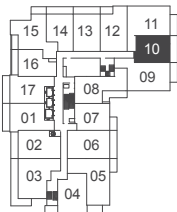
SUITE AREA:593 sq.ft.

OUTDOOR AREA:LEVEL 2: 109 sq.ft. LEVEL 3-5: 124 sq.ft.

TOTAL AREA:LEVEL 2: 702 sq.ft. LEVEL 3-5: 717 sq.ft.



2nd level



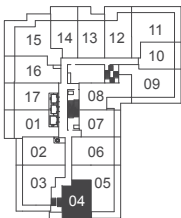
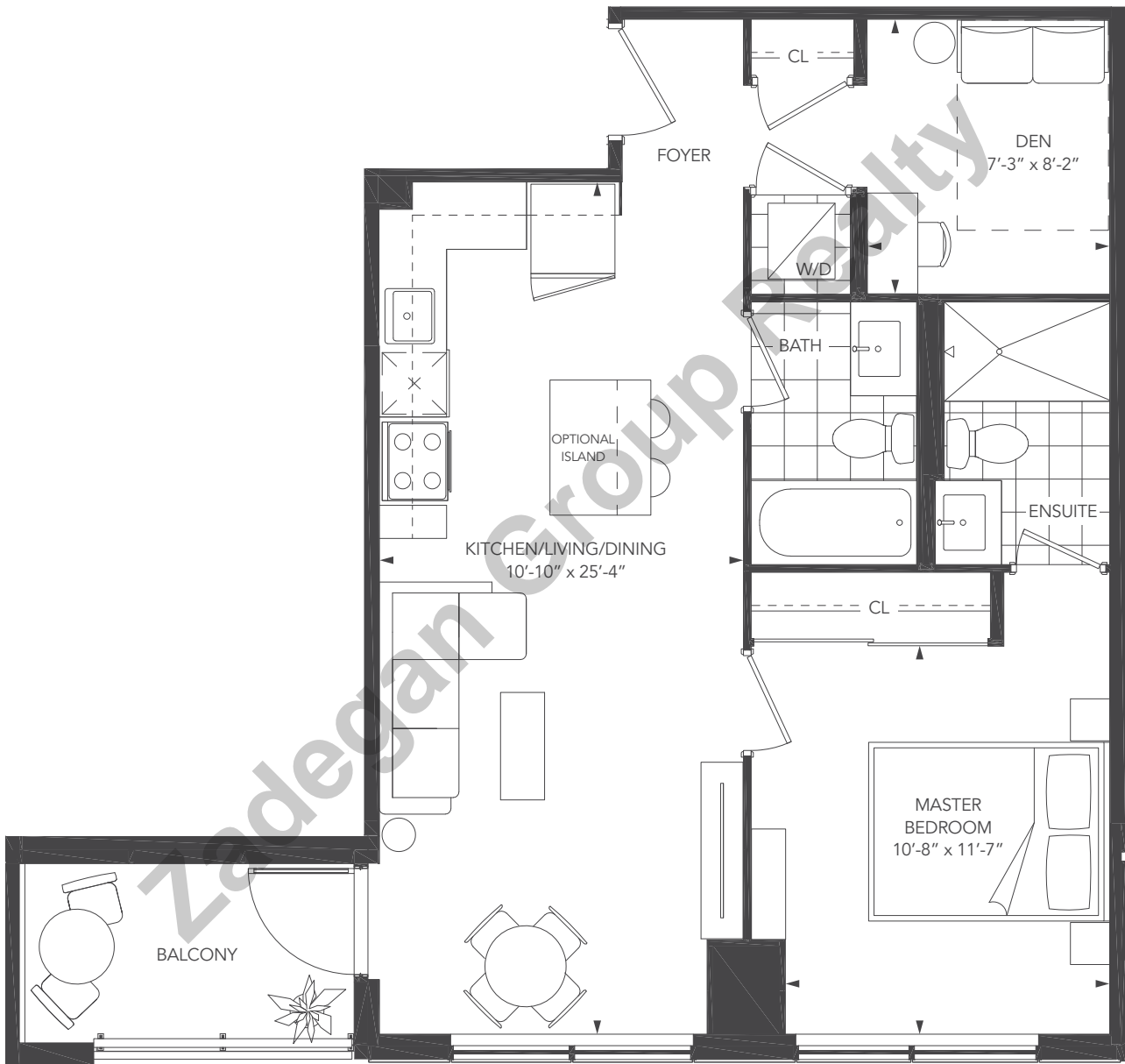
3rd - 5th level



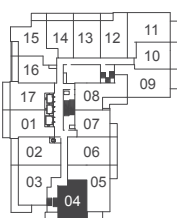
Note: Without limiting the generality of the terms and conditions of the agreement of purchase and sale, Purchasers are advised that all prices, figures, sizes, plans, specifications and information, including without limitation the size, location, design and layout of windows, doors, walls, fixtures, closets, structures, appliances (if any), and the balcony are subject to change without notice to the Purchaser in order to comply with site conditions, municipal or governmental, structural, or architectural requirements, or for any reason at the sole, unfettered and absolute discretion of the Vendor. Units on lower floors may have less floor space due to thicker structural members, mechanical rooms, etc. while units on higher floors may have more floorspace. Bulkheads may not be shown on this plan and may be located in areas of the Unit as required for venting and mechanical systems. All areas and stated dimensions are approximate. Actual usable floor space, living area and square footage may vary from stated floor area. All illustrations are artist's concept only. Furniture is depicted for illustration purposes only & are not included. The unit shown may be the reverse of the unit purchased. The exact location of any balcony (if applicable) in relation to the unit layout may differ from that shown. The locations of the building and units shown are approximate only and are subject to change without notice to the Purchaser. E. & O.E. 10.08.19

UNIVERSAL CITY THREE - 1D+D

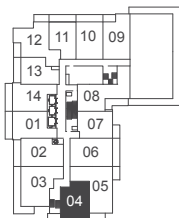
UNIT TYPE: 1 BEDROOM+DEN/1D+D
SUITE AREA: 693 sq.ft.
OUTDOOR AREA: 59 sq.ft.
TOTAL AREA: 752 sq.ft.



2nd level



3rd - 5th level

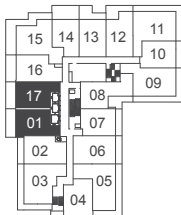
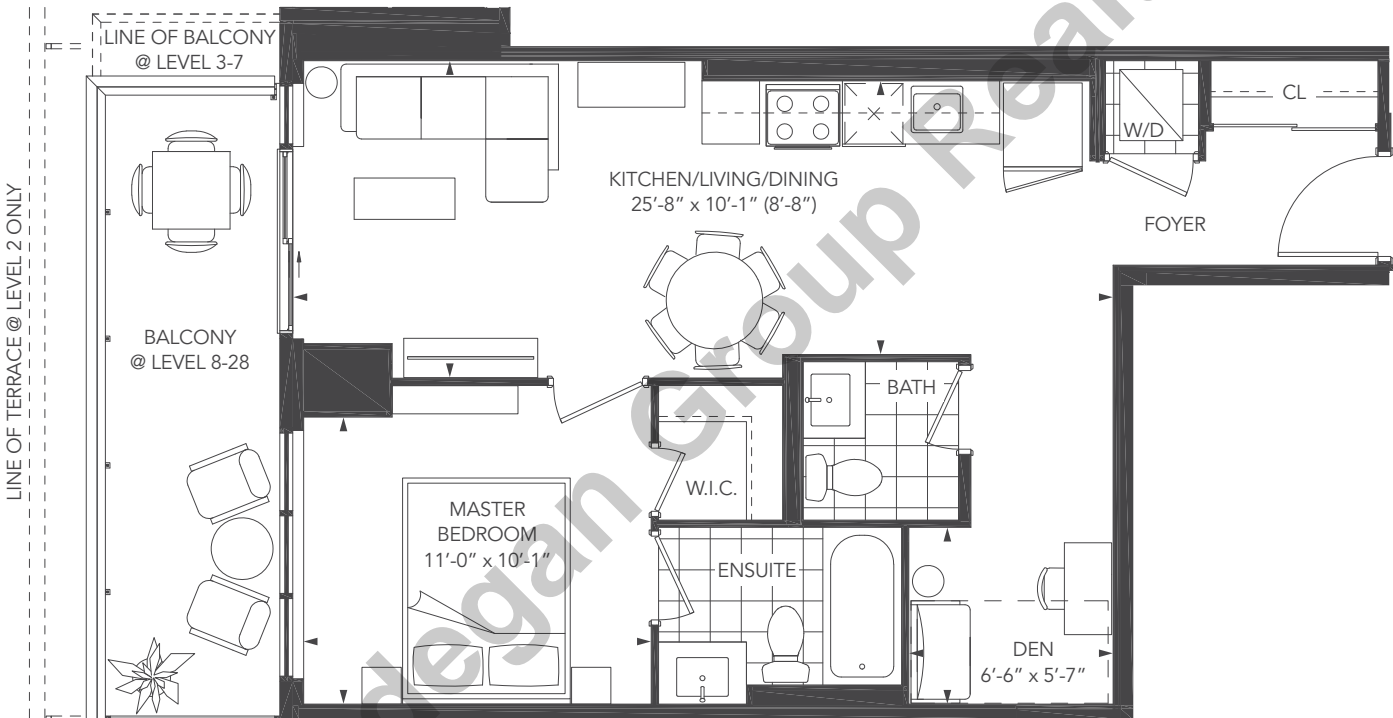


6th level

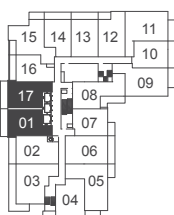


UNIVERSAL CITY THREE - 1G+D

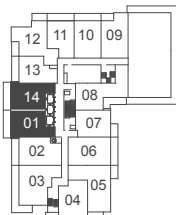
UNIT TYPE:	1 BEDROOM+DEN/1G+D		
SUITE AREA:	663 sq.ft.		
OUTDOOR AREA:	LEVEL 2: 176 sq.ft. (Unit 01)	LEVEL 3-7: 127 sq.ft.	LEVEL 8-28: 116 sq.ft.
	LEVEL 2: 167 sq.ft. (Unit 17)		
TOTAL AREA:	LEVEL 2: 839 sq.ft. (Unit 01)	LEVEL 3-7: 790 sq.ft.	LEVEL 8-28: 779 sq.ft.
	LEVEL 2: 830 sq.ft. (Unit 17)		



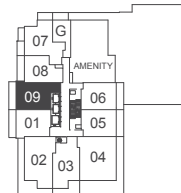
2nd level



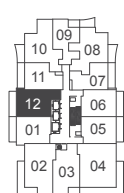
3rd - 5th level



6th level



7th level



8th - 28th level



UNIVERSAL CITY THREE - 1H+D

UNIT TYPE:

SUITE AREA:

OUTDOOR AREA:

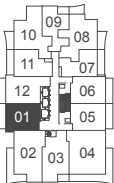
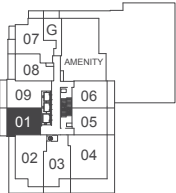
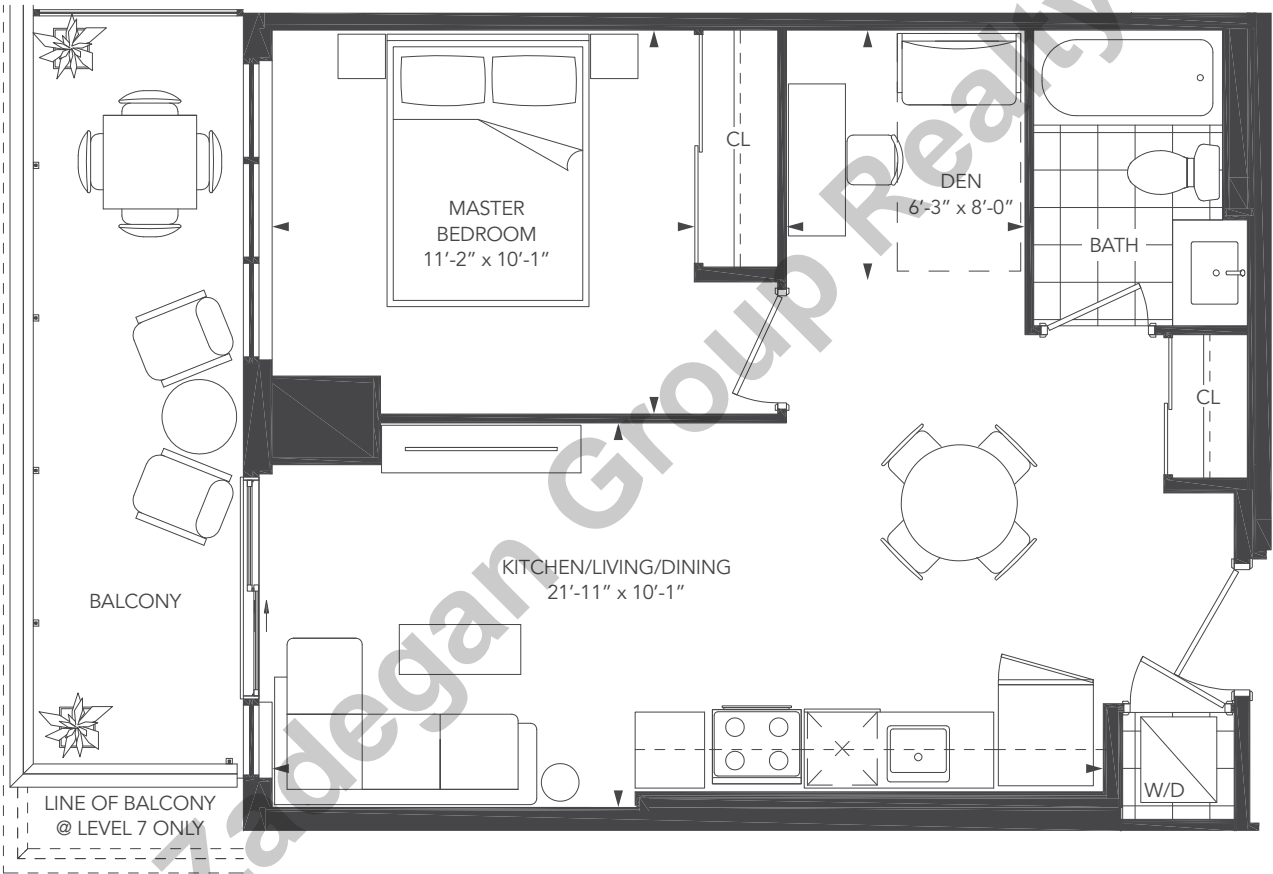
TOTAL AREA:

1 BEDROOM+DEN/1H+D

593 sq.ft.

LEVEL 7: 127 sq.ft. LEVEL 8-28: 116 sq.ft.

LEVEL 7: 720 sq.ft. LEVEL 8-28: 709 sq.ft.



7th level

8th - 28th level



Note: Without limiting the generality of the terms and conditions of the agreement of purchase and sale, Purchasers are advised that all prices, figures, sizes, plans, specifications and information, including without limitation the size, location, design and layout of windows, doors, walls, fixtures, closets, structures, appliances (if any), and the balcony are subject to change without notice to the Purchaser in order to comply with site conditions, municipal or governmental, structural, or architectural requirements, or for any reason at the sole, unfettered and absolute discretion of the Vendor. Units on lower floors may have less floor space due to thicker structural members, mechanical rooms, etc. while units on higher floors may have more floorspace. Bulkheads may not be shown on this plan and may be located in areas of the Unit as required for venting and mechanical systems. All areas and stated dimensions are approximate. Actual usable floor space, living area and square footage may vary from stated floor area. All illustrations are artist's concept only. Furniture is depicted for illustration purposes only & are not included. The unit shown may be the reverse of the unit purchased. The exact location of any balcony (if applicable) in relation to the unit layout may differ from that shown. The locations of the building and units shown are approximate only and are subject to change without notice to the Purchaser. E. & O.E. 10.08.19

UNIVERSAL CITY THREE - 1J+D

UNIT TYPE:

SUITE AREA:

OUTDOOR AREA:

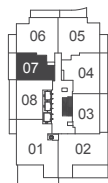
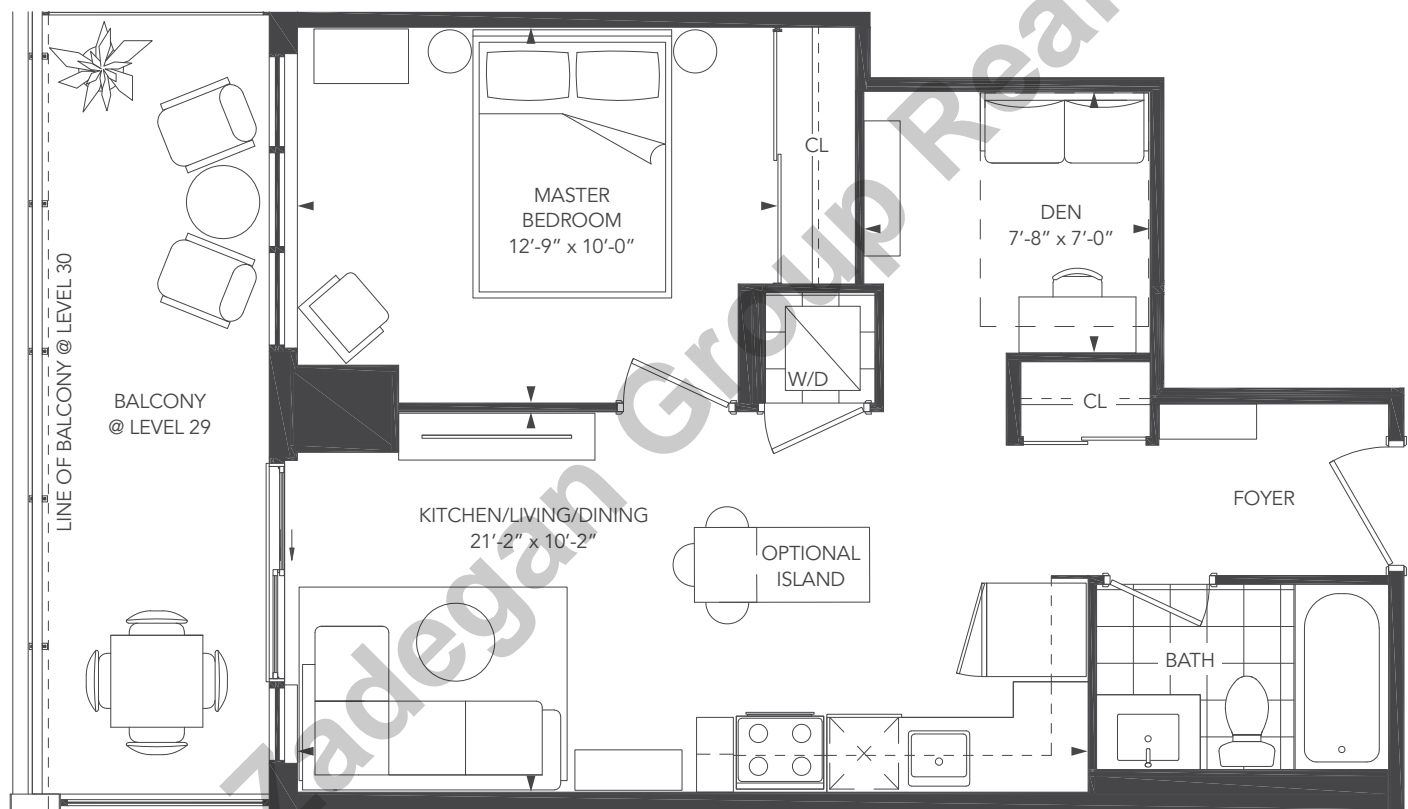
TOTAL AREA:

1 BEDROOM + DEN/1J+D

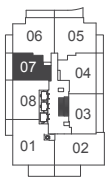
578 sq.ft.

LEVEL 29: 124 sq.ft. LEVEL 30: 134 sq.ft.

LEVEL 29: 702 sq.ft. LEVEL 30: 712 sq.ft.



29th level

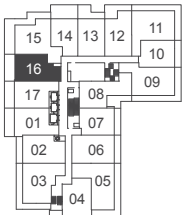
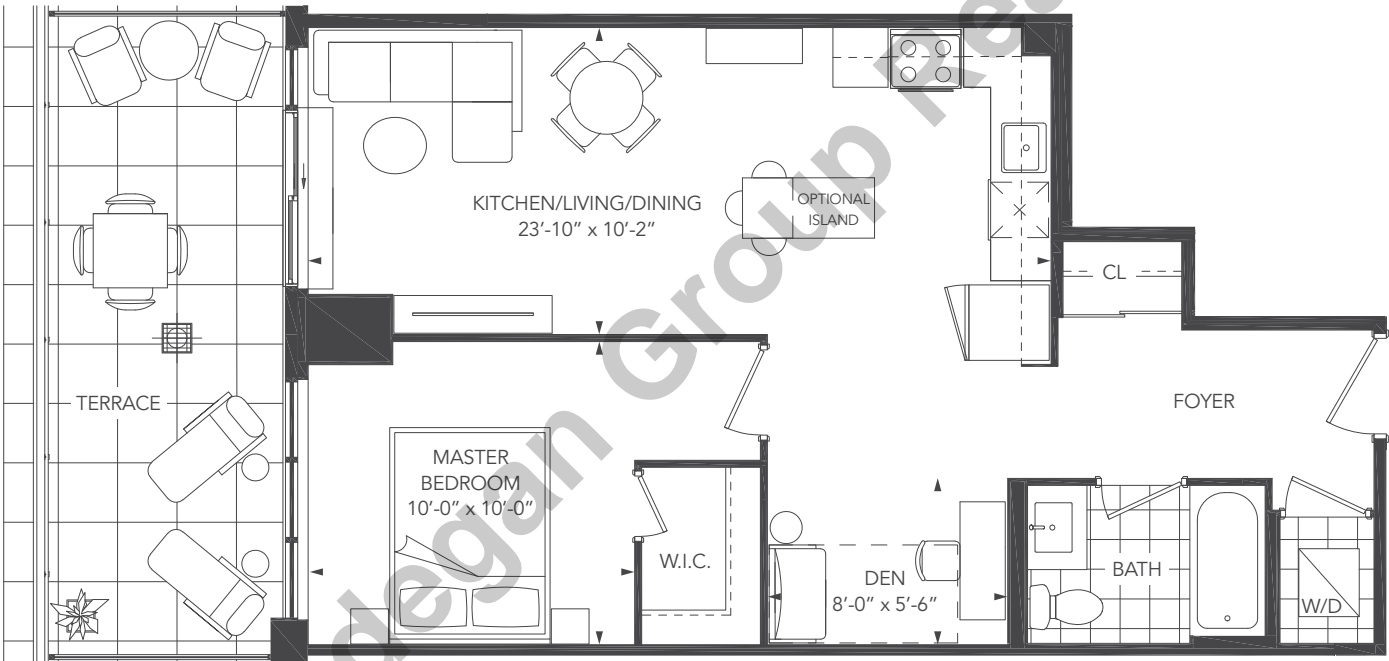


30th level



UNIVERSAL CITY THREE - 1K+D

UNIT TYPE: 1 BEDROOM + DEN/1K+D
SUITE AREA: 693 sq.ft.
OUTDOOR AREA: 175 sq.ft.
TOTAL AREA: 868 sq.ft.



2nd level



Note: Without limiting the generality of the terms and conditions of the agreement of purchase and sale, Purchasers are advised that all prices, figures, sizes, plans, specifications and information, including without limitation the size, location, design and layout of windows, doors, walls, fixtures, closets, structures, appliances (if any), and the balcony are subject to change without notice to the Purchaser in order to comply with site conditions, municipal or governmental, structural, or architectural requirements, or for any reason at the sole, unfettered and absolute discretion of the Vendor. Units on lower floors may have less floor space due to thicker structural members, mechanical rooms, etc. while units on higher floors may have more floorspace. Bulkheads may not be shown on this plan and may be located in areas of the Unit as required for venting and mechanical systems. All areas and stated dimensions are approximate. Actual usable floor space, living area and square footage may vary from stated floor area. All illustrations are artist's concept only. Furniture is depicted for illustration purposes only & are not included. The unit shown may be the reverse of the unit purchased. The exact location of any balcony (if applicable) in relation to the unit layout may differ from that shown. The locations of the building and units shown are approximate only and are subject to change without notice to the Purchaser. E. & O.E. 10.08.19

UNIT TYPE:

SUITE AREA:

OUTDOOR AREA:

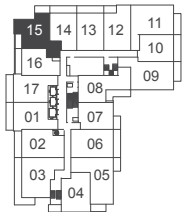
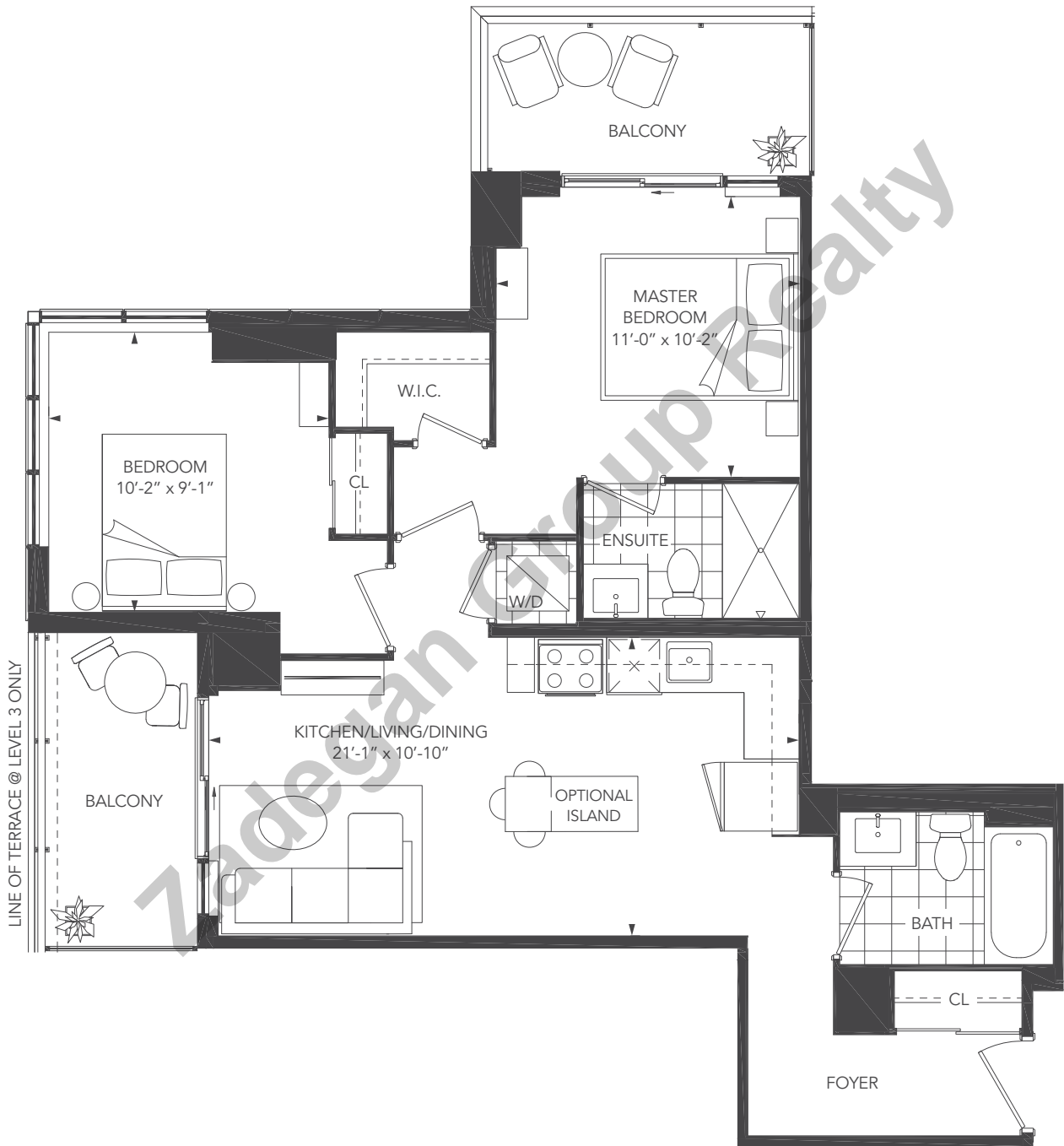
TOTAL AREA:

2 BEDROOM/2A

790 sq.ft.

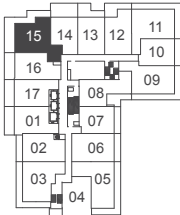
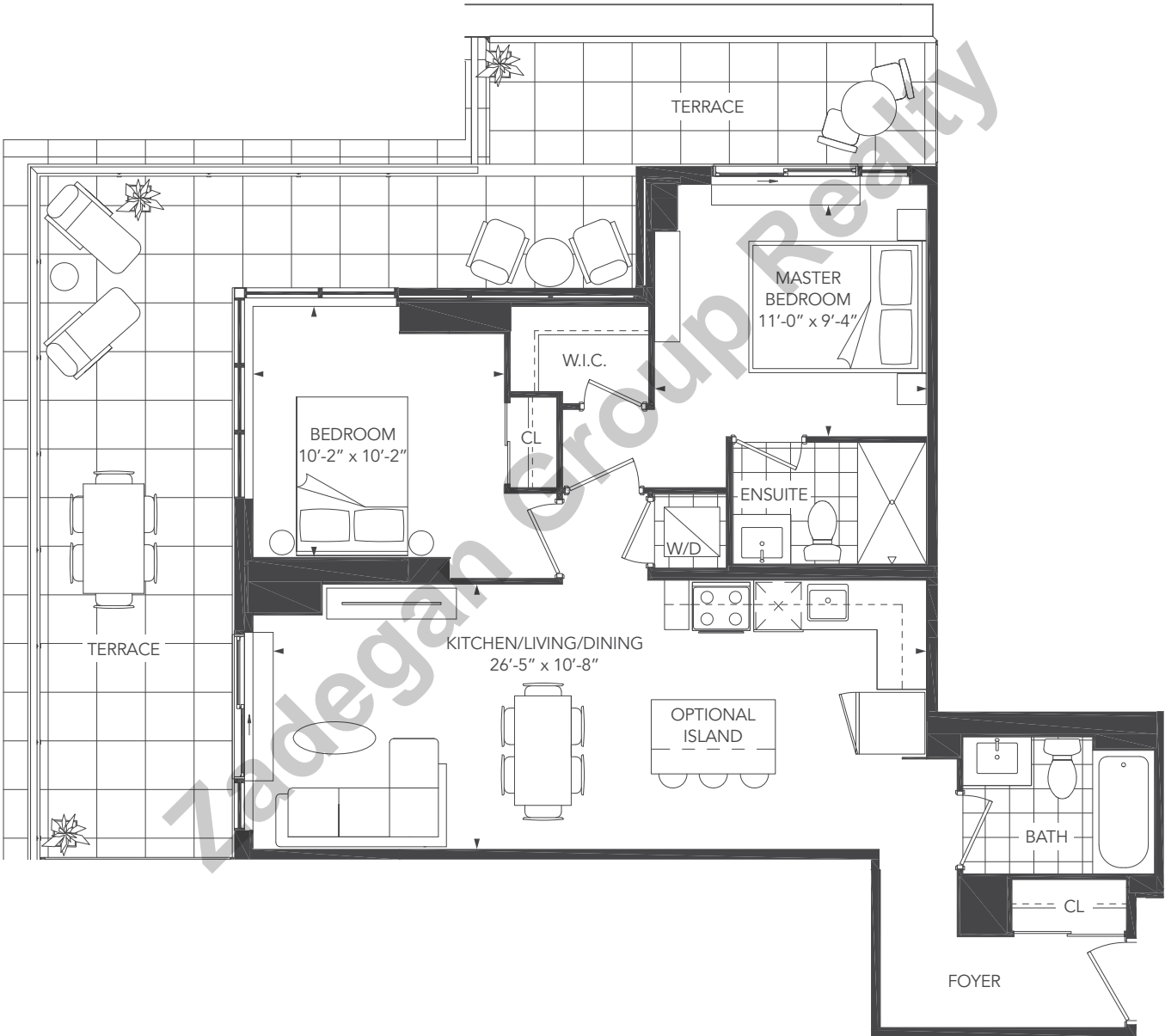
LEVEL 3: 194 sq.ft. LEVEL 4-6: 206 sq.ft.

LEVEL 3: 984 sq.ft. LEVEL 4-6: 996 sq.ft.



3rd - 6th level

UNIT TYPE: 2 BEDROOM/2A1
SUITE AREA: 860 sq.ft.
OUTDOOR AREA: 410 sq.ft.
TOTAL AREA: 1,270 sq.ft.



2nd level

Note: Without limiting the generality of the terms and conditions of the agreement of purchase and sale, Purchasers are advised that all prices, figures, sizes, plans, specifications and information, including without limitation the size, location, design and layout of windows, doors, walls, fixtures, closets, structures, appliances (if any), and the balcony are subject to change without notice to the Purchaser in order to comply with site conditions, municipal or governmental, structural, or architectural requirements, or for any reason at the sole, unfettered and absolute discretion of the Vendor. Units on lower floors may have less floor space due to thicker structural members, mechanical rooms, etc. while units on higher floors may have more floorspace. Bulkheads may not be shown on this plan and may be located in areas of the Unit as required for venting and mechanical systems. All areas and stated dimensions are approximate. Actual usable floor space, living area and square footage may vary from stated floor area. All illustrations are artist's concept only. Furniture is depicted for illustration purposes only & are not included. The unit shown may be the reverse of the unit purchased. The exact location of any balcony (if applicable) in relation to the unit layout may differ from that shown. The locations of the building and units shown are approximate only and are subject to change without notice to the Purchaser. E. & O.E. 10.08.19

UNIVERSAL CITY THREE - 2B

UNIT TYPE:

SUITE AREA:

OUTDOOR AREA:

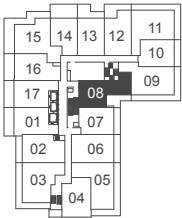
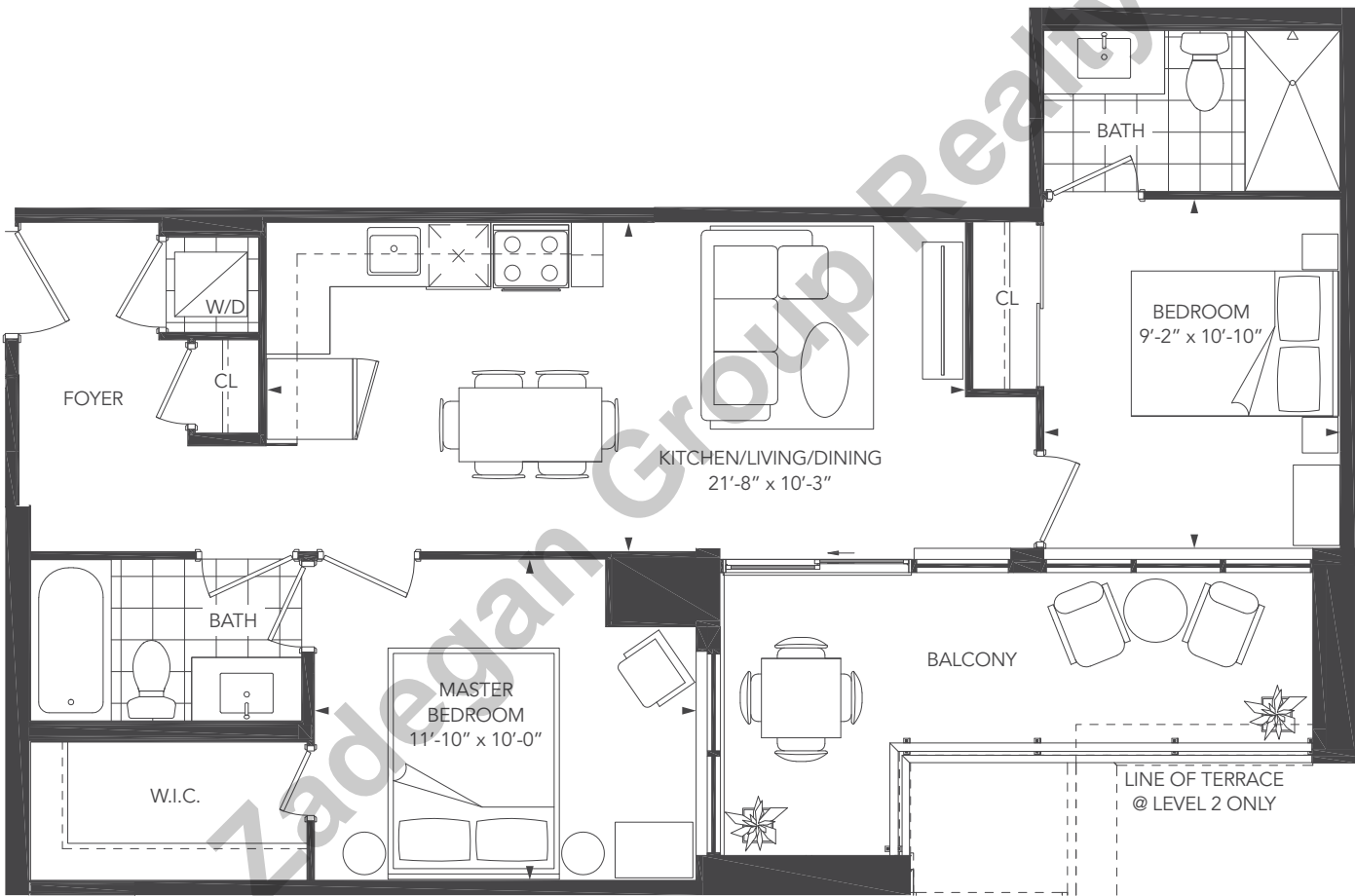
TOTAL AREA:

2 BEDROOM/2B

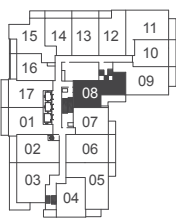
765 sq.ft.

LEVEL 2: 144 sq.ft. LEVEL 3-5: 127 sq.ft.

LEVEL 2: 909 sq.ft. LEVEL 3-5: 892 sq.ft.



2nd level

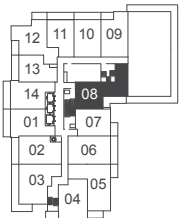
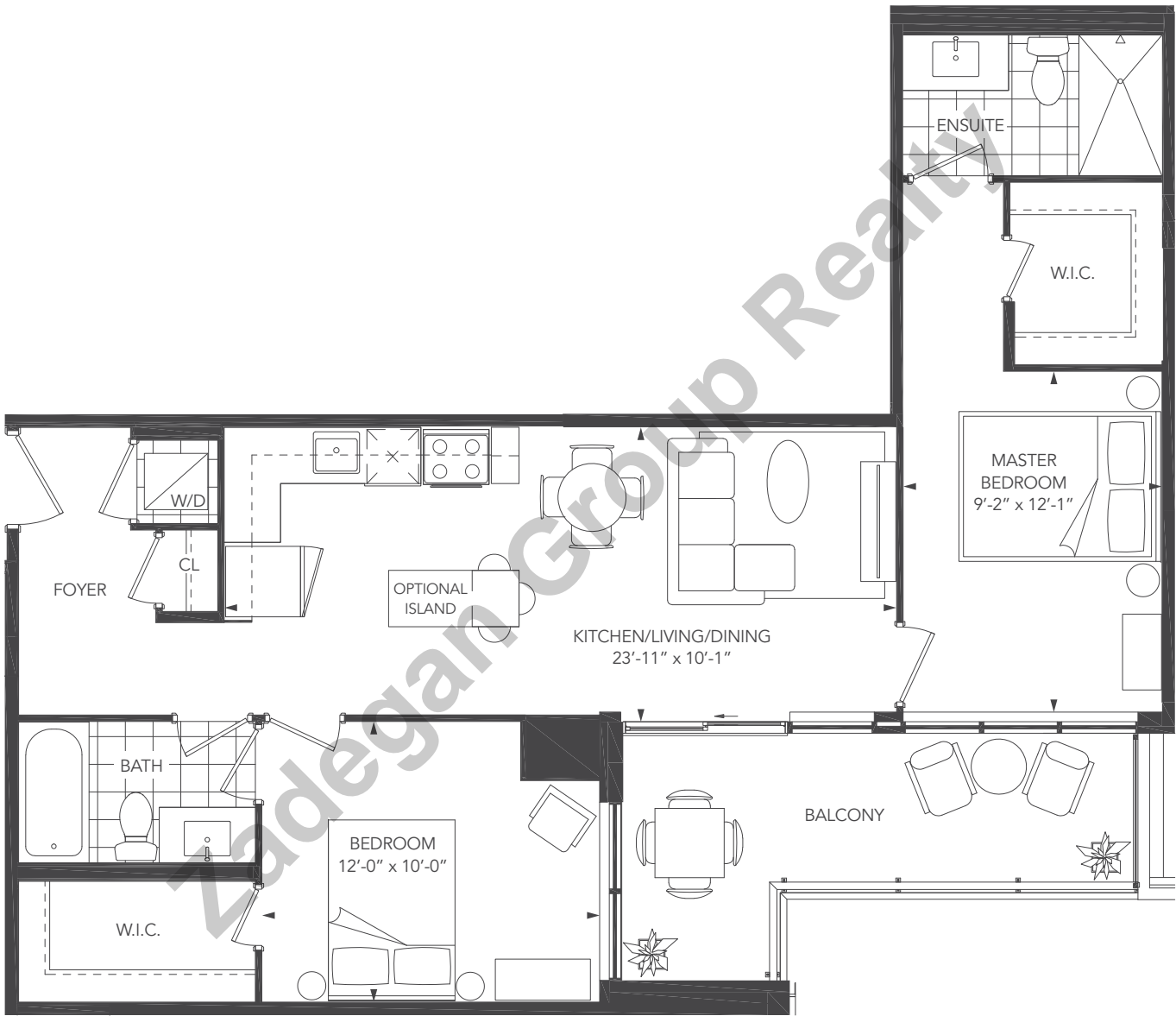


3rd - 5th level



UNIVERSAL CITY THREE - 2B1

UNIT TYPE: 2 BEDROOM/2B1
SUITE AREA: 844 sq.ft.
OUTDOOR AREA: 120 sq.ft.
TOTAL AREA: 964 sq.ft.



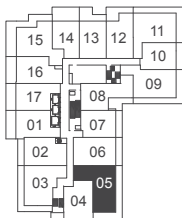
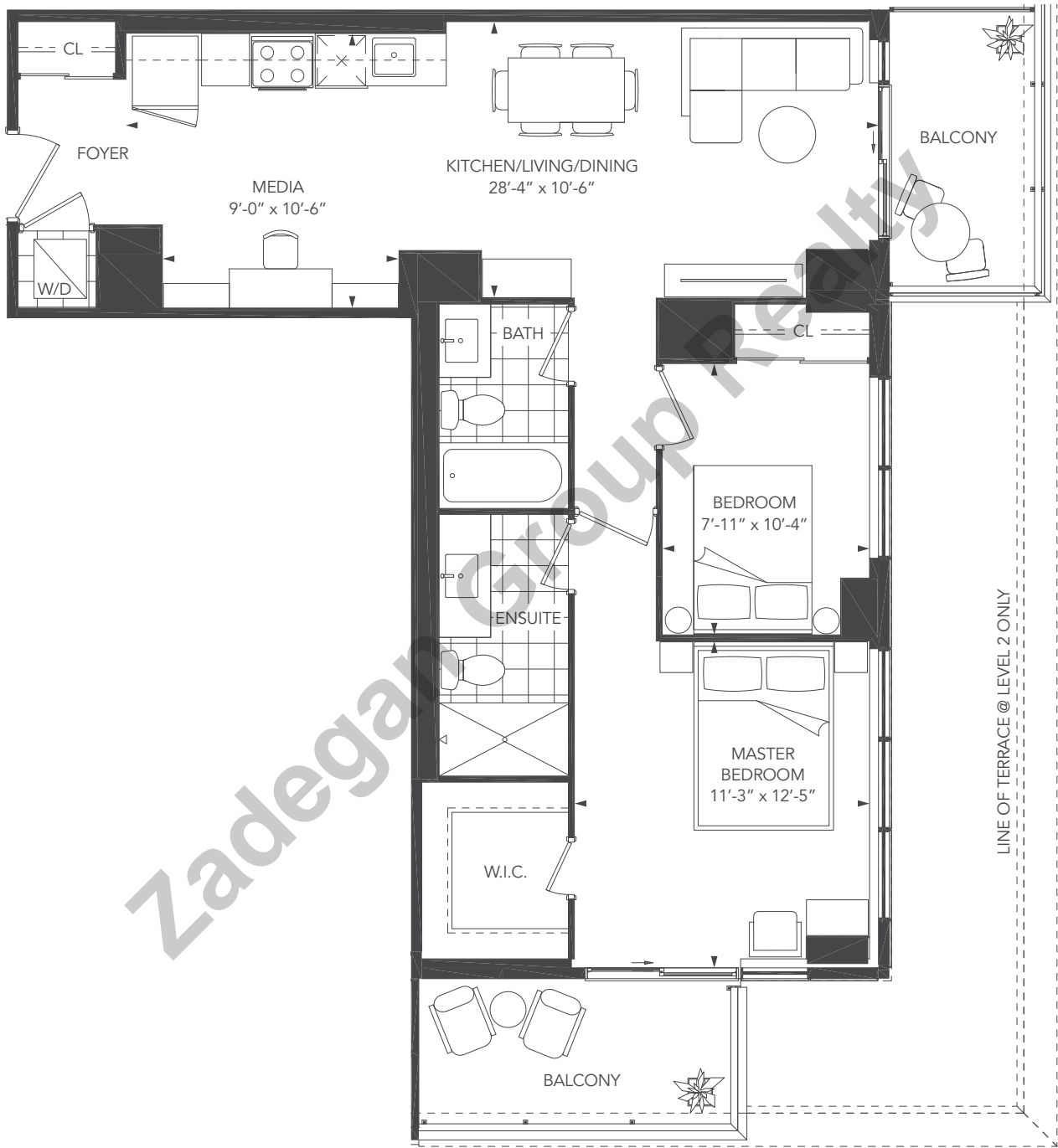
6th level



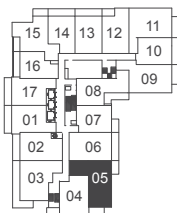
Note: Without limiting the generality of the terms and conditions of the agreement of purchase and sale, Purchasers are advised that all prices, figures, sizes, plans, specifications and information, including without limitation the size, location, design and layout of windows, doors, walls, fixtures, closets, structures, appliances (if any), and the balcony are subject to change without notice to the Purchaser in order to comply with site conditions, municipal or governmental, structural, or architectural requirements, or for any reason at the sole, unfettered and absolute discretion of the Vendor. Units on lower floors may have less floor space due to thicker structural members, mechanical rooms, etc. while units on higher floors may have more floorspace. Bulkheads may not be shown on this plan and may be located in areas of the Unit as required for venting and mechanical systems. All areas and stated dimensions are approximate. Actual usable floor space, living area and square footage may vary from stated floor area. All illustrations are artist's concept only. Furniture is depicted for illustration purposes only & are not included. The unit shown may be the reverse of the unit purchased. The exact location of any balcony (if applicable) in relation to the unit layout may differ from that shown. The locations of the building and units shown are approximate only and are subject to change without notice to the Purchaser. E. & O.E. 10.08.19

UNIVERSAL CITY THREE - 2C

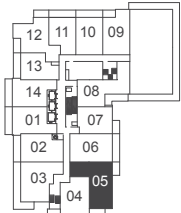
UNIT TYPE: 2 BEDROOM+MEDIA/2C
SUITE AREA: 862 sq.ft.
OUTDOOR AREA: LEVEL 2: 307 sq.ft. LEVEL 3-6: 133 sq.ft.
TOTAL AREA: LEVEL 2: 1,169 sq.ft. LEVEL 3-6: 995 sq.ft.



2nd level



3rd - 5th level



6th level



Note: Without limiting the generality of the terms and conditions of the agreement of purchase and sale, Purchasers are advised that all prices, figures, sizes, plans, specifications and information, including without limitation the size, location, design and layout of windows, doors, walls, fixtures, closets, structures, appliances (if any), and the balcony are subject to change without notice to the Purchaser in order to comply with site conditions, municipal or governmental, structural, or architectural requirements, or for any reason at the sole, unfettered and absolute discretion of the Vendor. Units on lower floors may have less floor space due to thicker structural members, mechanical rooms, etc. while units on higher floors may have more floorspace. Bulkheads may not be shown on this plan and may be located in areas of the Unit as required for venting and mechanical systems. All areas and stated dimensions are approximate. Actual usable floor space, living area and square footage may vary from stated floor area. All illustrations are artist's concept only. Furniture is depicted for illustration purposes only & are not included. The unit shown may be the reverse of the unit purchased. The exact location of any balcony (if applicable) in relation to the unit layout may differ from that shown. The locations of the building and units shown are approximate only and are subject to change without notice to the Purchaser. E. & O.E. 10.08.19

UNIT TYPE:

SUITE AREA:

OUTDOOR AREA:

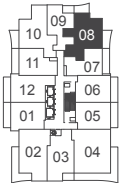
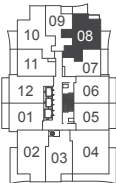
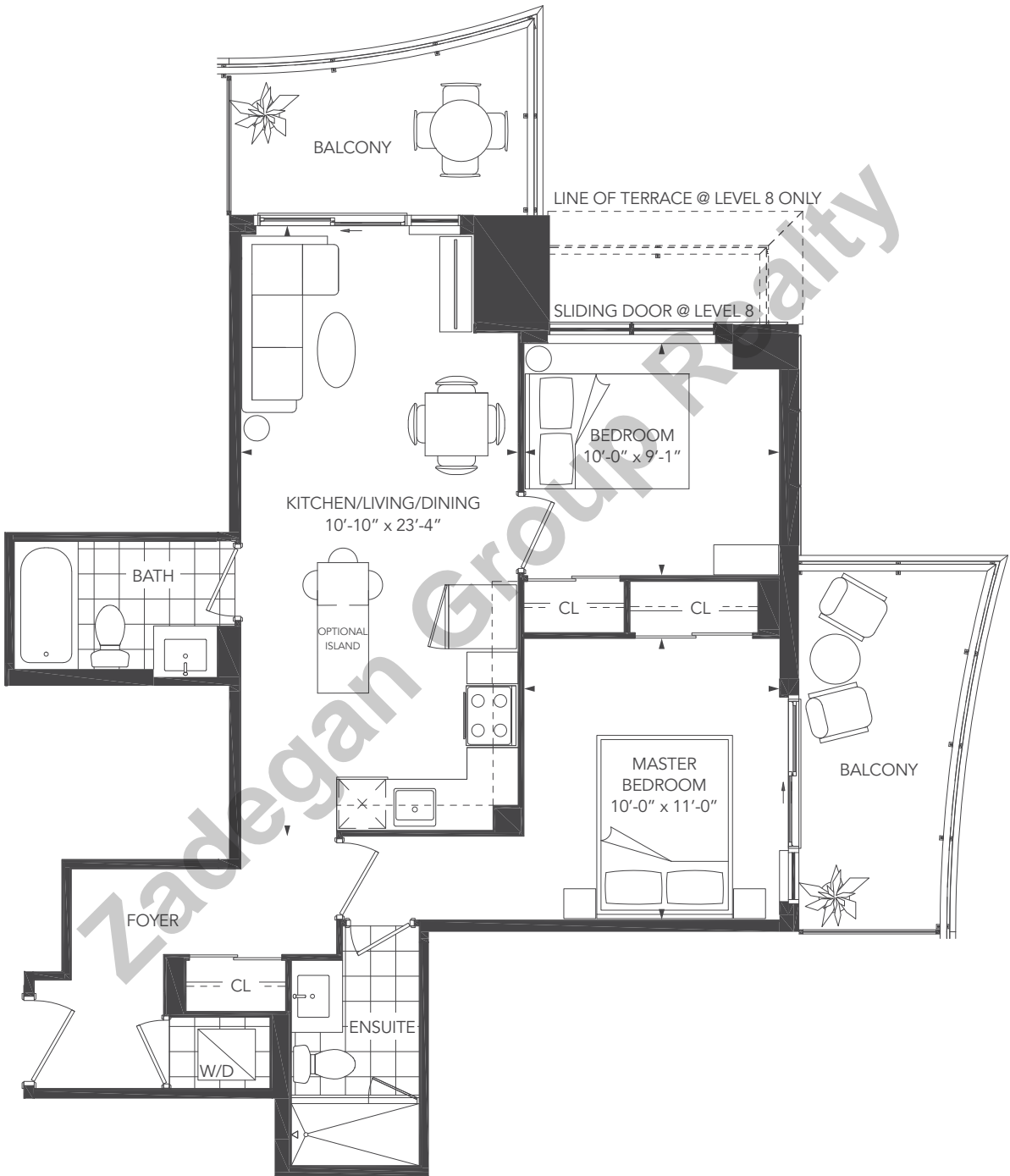
TOTAL AREA:

2 BEDROOM/2E

787 sq.ft.

LEVEL 8: 197 sq.ft. LEVEL 9-28: 170 sq.ft.

LEVEL 8: 984 sq.ft. LEVEL 9-28: 957 sq.ft.



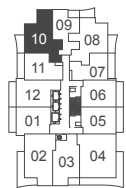
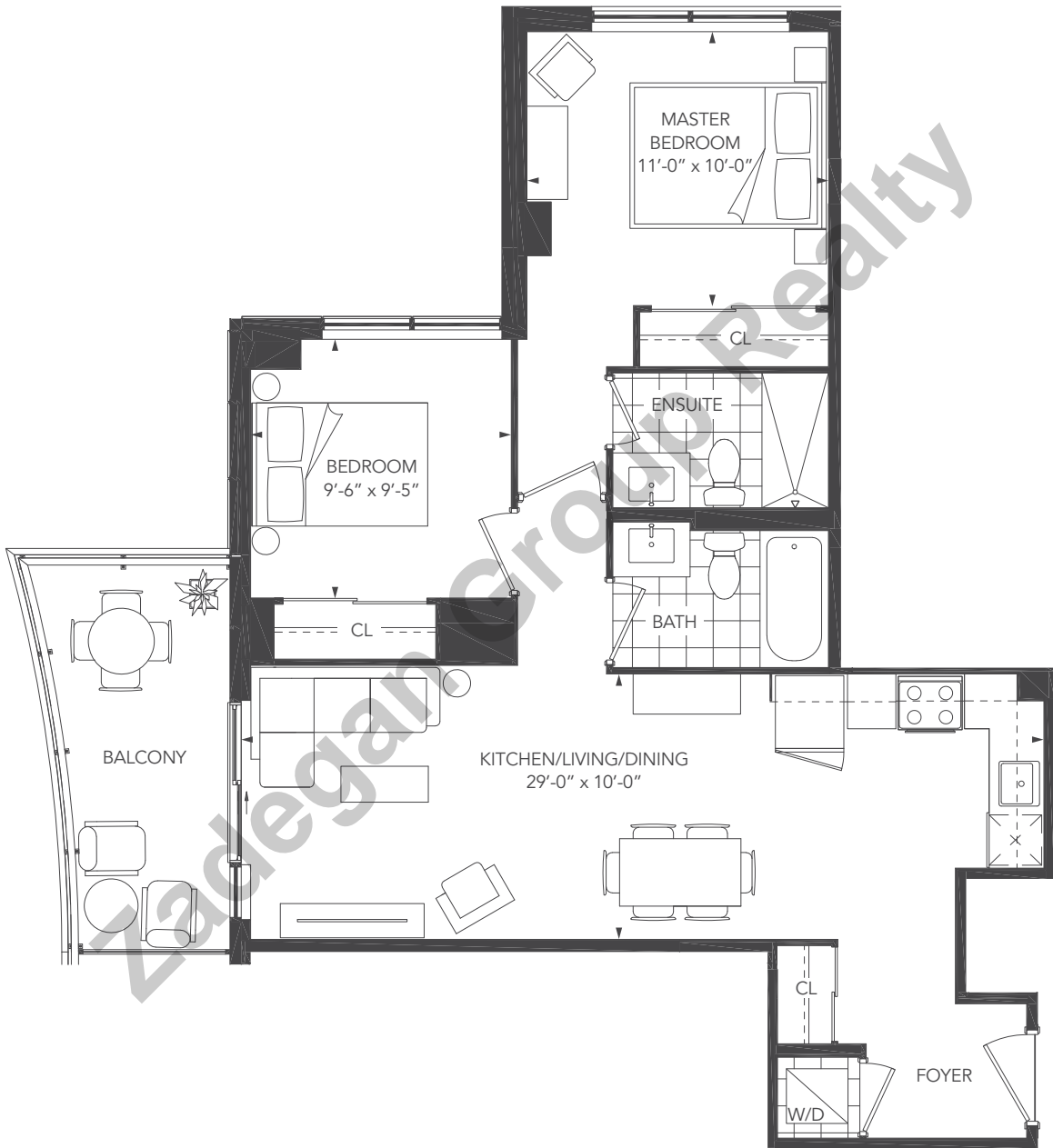
8th level

9th - 28th level



UNIVERSAL CITY THREE - 2F

UNIT TYPE: 2 BEDROOM/2F
SUITE AREA: 803 sq.ft.
OUTDOOR AREA: 93 sq.ft.
TOTAL AREA: 896 sq.ft.

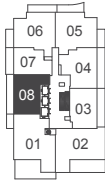
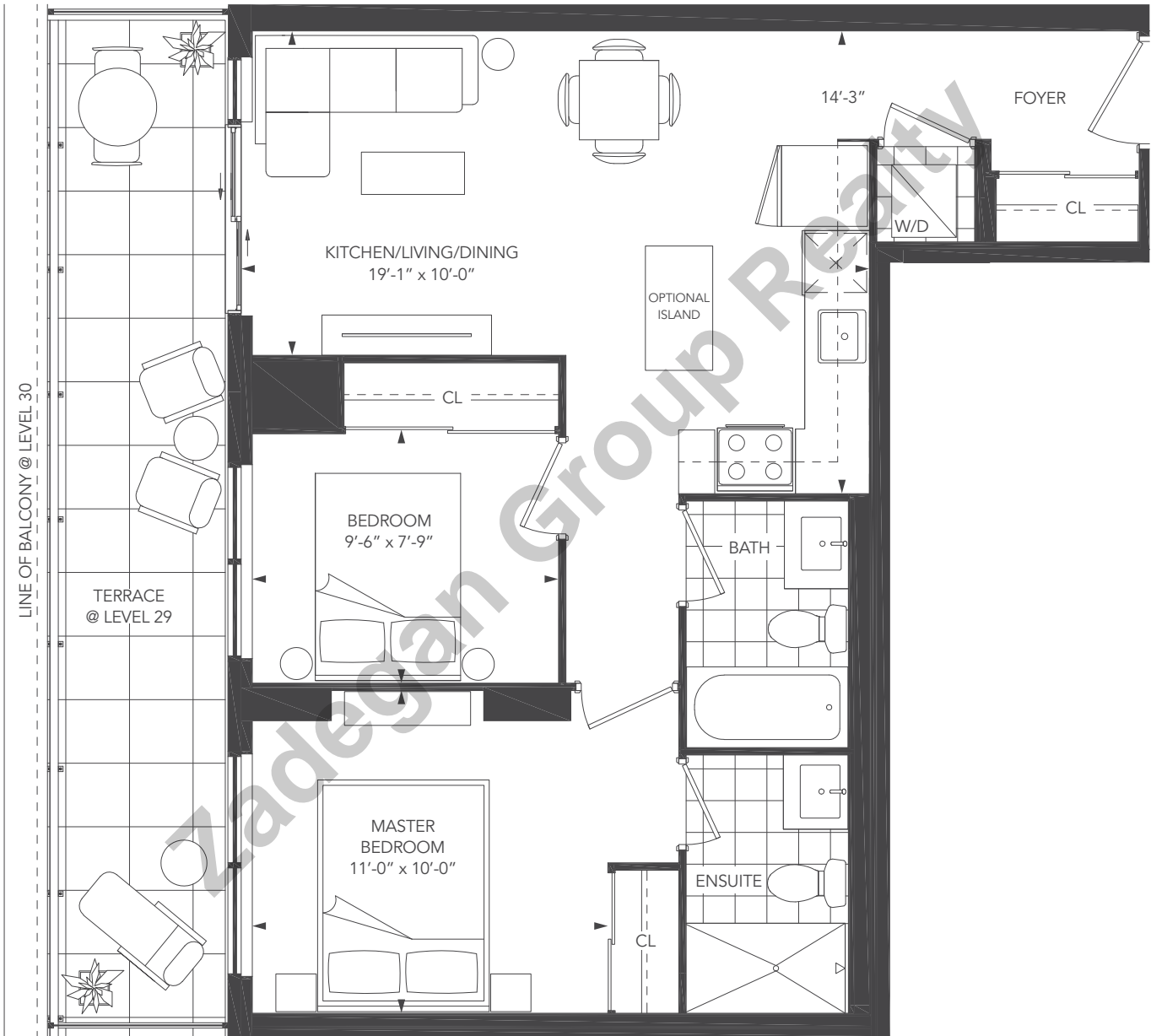


8th - 28th level

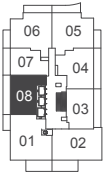


UNIVERSAL CITY THREE - 2G

UNIT TYPE: 2 BEDROOM/2G
SUITE AREA: 721 sq.ft.
OUTDOOR AREA: LEVEL 29: 177 sq.ft. LEVEL 30: 181 sq.ft.
TOTAL AREA: LEVEL 29: 898 sq.ft. LEVEL 30: 902 sq.ft.



29th level



30th level



Note: Without limiting the generality of the terms and conditions of the agreement of purchase and sale, Purchasers are advised that all prices, figures, sizes, plans, specifications and information, including without limitation the size, location, design and layout of windows, doors, walls, fixtures, closets, structures, appliances (if any), and the balcony are subject to change without notice to the Purchaser in order to comply with site conditions, municipal or governmental, structural, or architectural requirements, or for any reason at the sole, unfettered and absolute discretion of the Vendor. Units on lower floors may have less floor space due to thicker structural members, mechanical rooms, etc. while units on higher floors may have more floorspace. Bulkheads may not be shown on this plan and may be located in areas of the Unit as required for venting and mechanical systems. All areas and stated dimensions are approximate. Actual usable floor space, living area and square footage may vary from stated floor area. All illustrations are artist's concept only. Furniture is depicted for illustration purposes only & are not included. The unit shown may be the reverse of the unit purchased. The exact location of any balcony (if applicable) in relation to the unit layout may differ from that shown. The locations of the building and units shown are approximate only and are subject to change without notice to the Purchaser. E. & O.E. 10.08.19

UNIVERSAL CITY THREE - 2H

UNIT TYPE:

SUITE AREA:

OUTDOOR AREA:

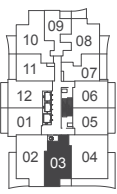
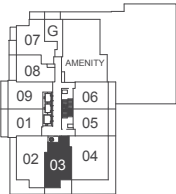
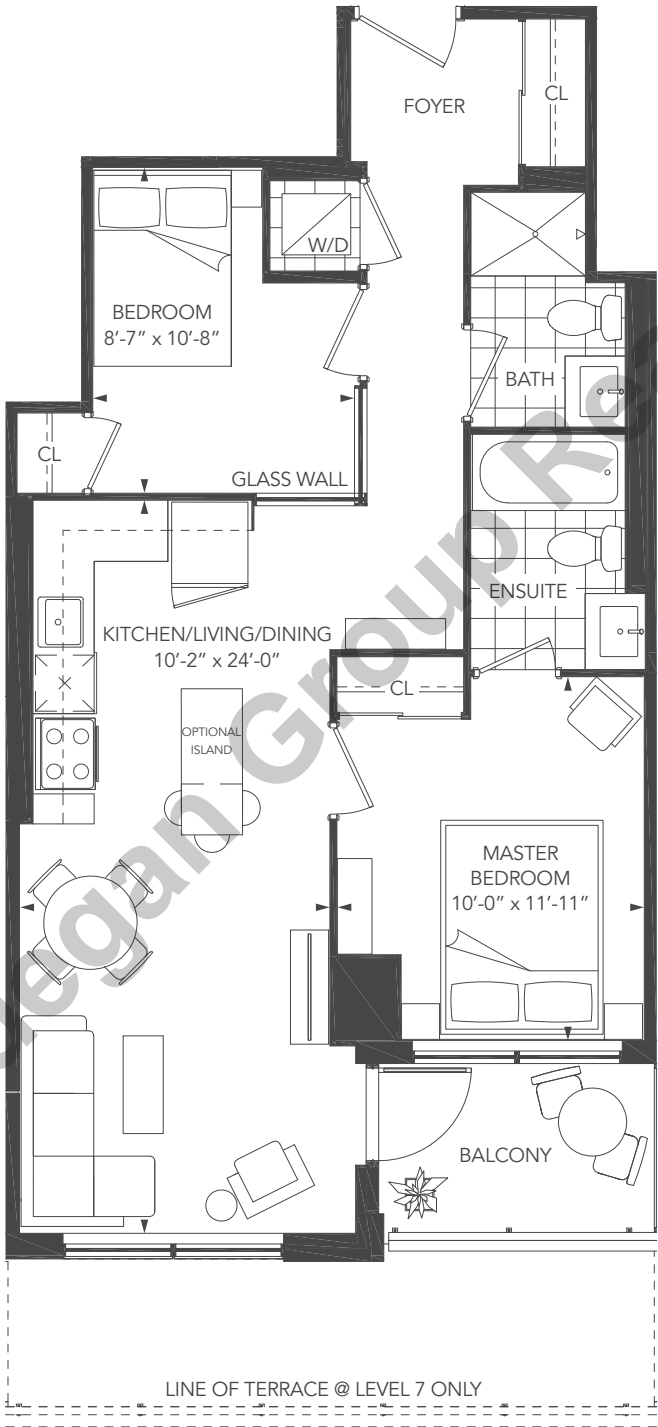
TOTAL AREA:

2 BEDROOM/2H

732 sq.ft.

LEVEL 7: 165 sq.ft. LEVEL 8-28: 53 sq.ft.

LEVEL 7: 897 sq.ft. LEVEL 8-28: 785 sq.ft.



7th level

8th - 28th level



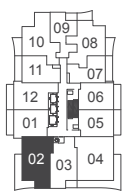
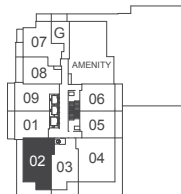
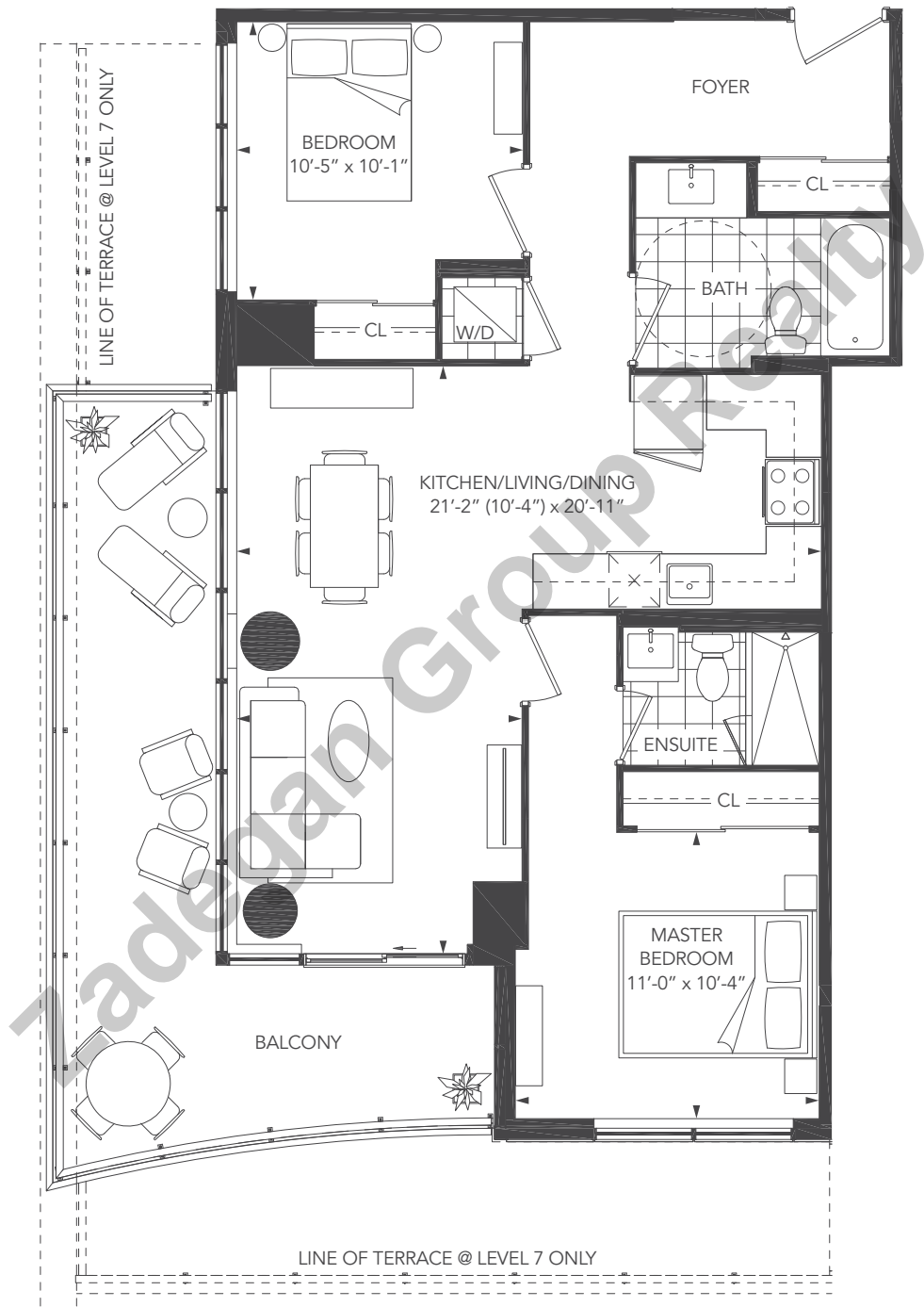
UNIVERSAL CITY THREE - 2J (BF)

UNIT TYPE:2 BEDROOM/2J

SUITE AREA:890 sq.ft.

OUTDOOR AREA:LEVEL 7: 403 sq.ft. LEVEL 8-28: 223 sq.ft.

TOTAL AREA:LEVEL 7: 1,293 sq.ft. LEVEL 8-28: 1,113 sq.ft.



7th level

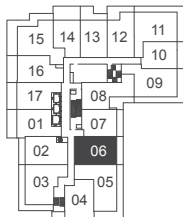
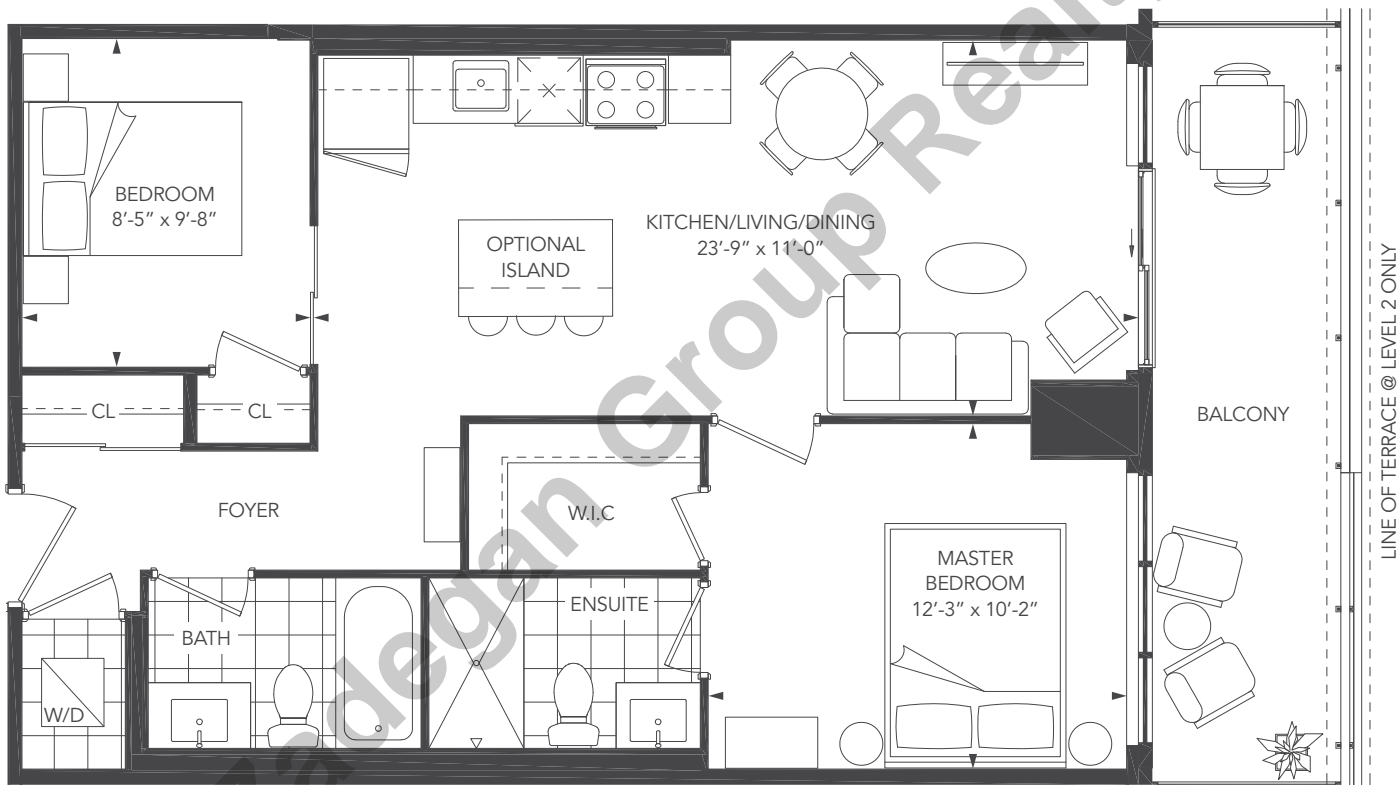
8th - 28th level



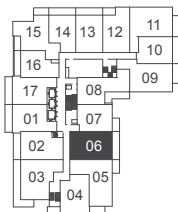
Note: Without limiting the generality of the terms and conditions of the agreement of purchase and sale, Purchasers are advised that all prices, figures, sizes, plans, specifications and information, including without limitation the size, location, design and layout of windows, doors, walls, fixtures, closets, structures, appliances (if any), and the balcony are subject to change without notice to the Purchaser in order to comply with site conditions, municipal or governmental, structural, or architectural requirements, or for any reason at the sole, unfettered and absolute discretion of the Vendor. Units on lower floors may have less floor space due to thicker structural members, mechanical rooms, etc. while units on higher floors may have more floorspace. Bulkheads may not be shown on this plan and may be located in areas of the Unit as required for venting and mechanical systems. All areas and stated dimensions are approximate. Actual usable floor space, living area and square footage may vary from stated floor area. All illustrations are artist's concept only. Furniture is depicted for illustration purposes only & are not included. The unit shown may be the reverse of the unit purchased. The exact location of any balcony (if applicable) in relation to the unit layout may differ from that shown. The locations of the building and units shown are approximate only and are subject to change without notice to the Purchaser. E. & O.E. 10.08.19

UNIVERSAL CITY THREE - 2K

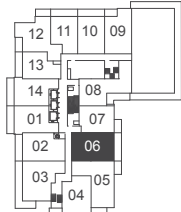
UNIT TYPE:	2 BEDROOM/2K		
SUITE AREA:	756 sq.ft.		
OUTDOOR AREA:	LEVEL 2: 114 sq.ft.	LEVEL 3-6: 129 sq.ft.	
TOTAL AREA:	LEVEL 2: 870 sq.ft.	LEVEL 3-6: 885 sq.ft.	



2nd level



3rd - 5th level



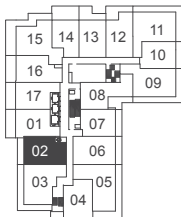
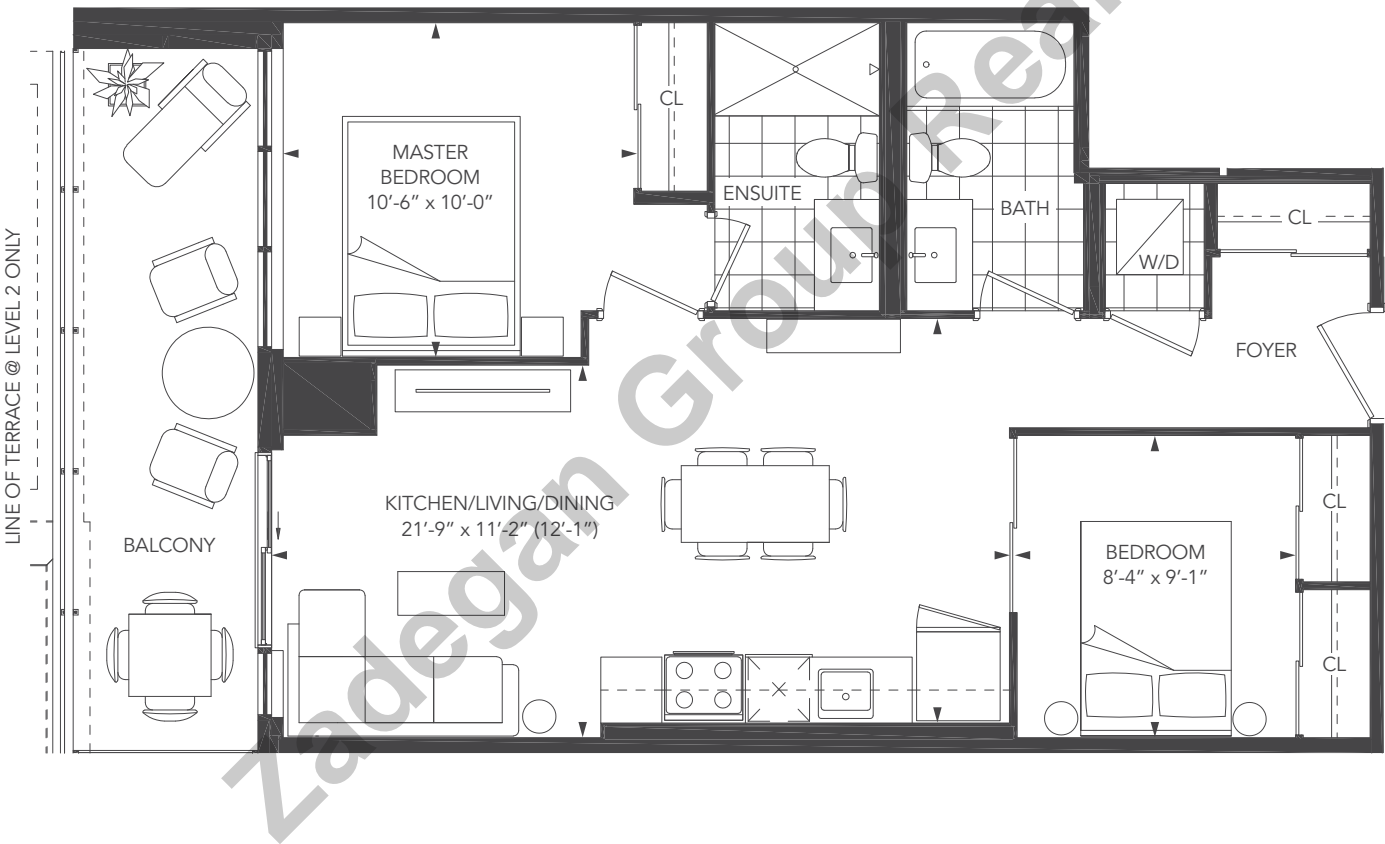
6th level



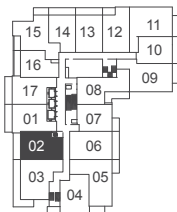
Note: Without limiting the generality of the terms and conditions of the agreement of purchase and sale, Purchasers are advised that all prices, figures, sizes, plans, specifications and information, including without limitation the size, location, design and layout of windows, doors, walls, fixtures, closets, structures, appliances (if any), and the balcony are subject to change without notice to the Purchaser in order to comply with site conditions, municipal or governmental, structural, or architectural requirements, or for any reason at the sole, unfettered and absolute discretion of the Vendor. Units on lower floors may have less floor space due to thicker structural members, mechanical rooms, etc. while units on higher floors may have more floorspace. Bulkheads may not be shown on this plan and may be located in areas of the Unit as required for venting and mechanical systems. All areas and stated dimensions are approximate. Actual usable floor space, living area and square footage may vary from stated floor area. All illustrations are artist's concept only. Furniture is depicted for illustration purposes only & are not included. The unit shown may be the reverse of the unit purchased. The exact location of any balcony (if applicable) in relation to the unit layout may differ from that shown. The locations of the building and units shown are approximate only and are subject to change without notice to the Purchaser. E. & O.E. 10.08.19

UNIVERSAL CITY THREE - 2L

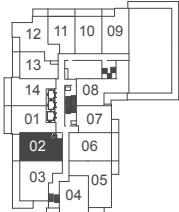
UNIT TYPE: 2 BEDROOM/2L
SUITE AREA: 716 sq.ft.
OUTDOOR AREA: LEVEL 2: 107 sq.ft. LEVEL 3-6: 122 sq.ft.
TOTAL AREA: LEVEL 2: 823 sq.ft. LEVEL 3-6: 838 sq.ft.



2nd level



3rd - 5th level



6th level



UNIT TYPE:

SUITE AREA:

OUTDOOR AREA:

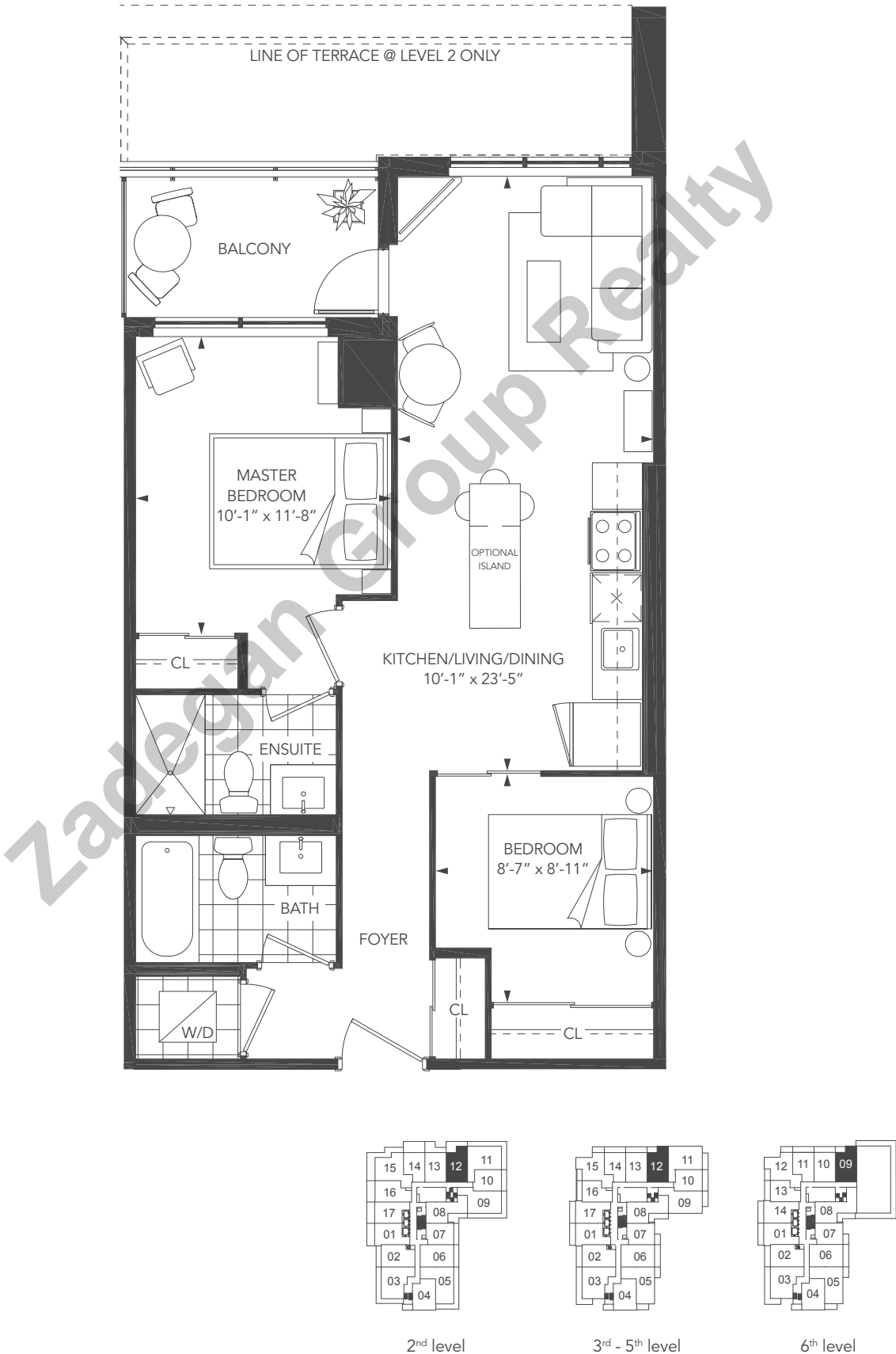
TOTAL AREA:

2 BEDROOM/2M

710 sq.ft.

LEVEL 2: 165 sq.ft. LEVEL 3-6: 58 sq.ft.

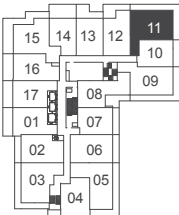
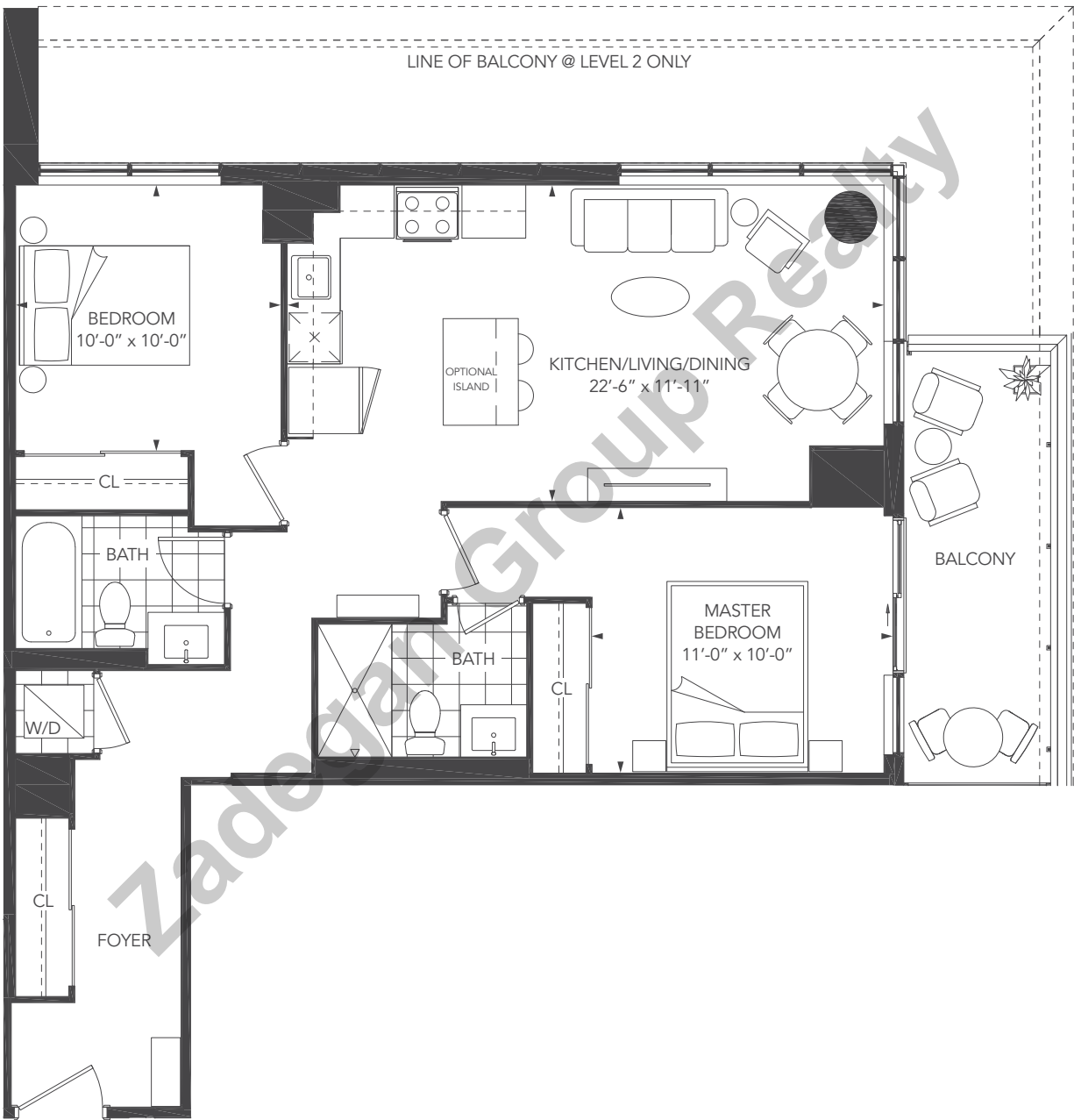
LEVEL 2: 875 sq.ft. LEVEL 3-6: 768 sq.ft.



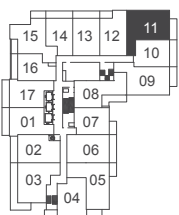
Note: Without limiting the generality of the terms and conditions of the agreement of purchase and sale, Purchasers are advised that all prices, figures, sizes, plans, specifications and information, including without limitation the size, location, design and layout of windows, doors, walls, fixtures, closets, structures, appliances (if any), and the balcony are subject to change without notice to the Purchaser in order to comply with site conditions, municipal or governmental, structural, or architectural requirements, or for any reason at the sole, unfettered and absolute discretion of the Vendor. Units on lower floors may have less floor space due to thicker structural members, mechanical rooms, etc. while units on higher floors may have more floorspace. Bulkheads may not be shown on this plan and may be located in areas of the Unit as required for venting and mechanical systems. All areas and stated dimensions are approximate. Actual usable floor space, living area and square footage may vary from stated floor area. All illustrations are artist's concept only. Furniture is depicted for illustration purposes only & are not included. The unit shown may be the reverse of the unit purchased. The exact location of any balcony (if applicable) in relation to the unit layout may differ from that shown. The locations of the building and units shown are approximate only and are subject to change without notice to the Purchaser. E. & O.E. 10.08.19

UNIVERSAL CITY THREE - 2N

UNIT TYPE: 2 BEDROOM/2N
SUITE AREA: 891 sq.ft.
OUTDOOR AREA: LEVEL 2: 304 sq.ft. LEVEL 3-5: 96 sq.ft.
TOTAL AREA: LEVEL 2: 1,195 sq.ft. LEVEL 3-5: 987 sq.ft.



2nd level



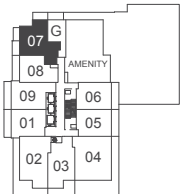
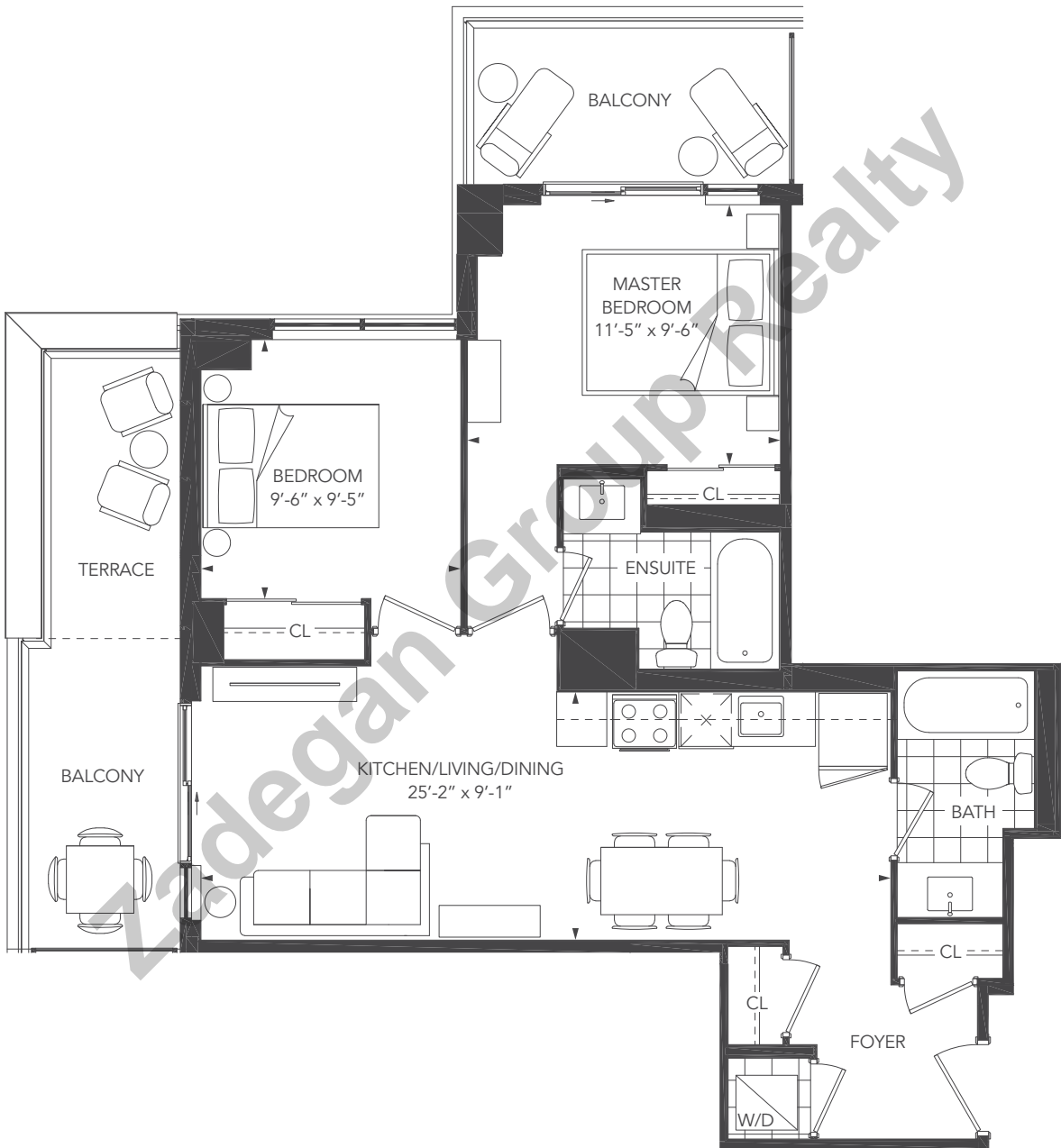
3rd - 5th level



Note: Without limiting the generality of the terms and conditions of the agreement of purchase and sale, Purchasers are advised that all prices, figures, sizes, plans, specifications and information, including without limitation the size, location, design and layout of windows, doors, walls, fixtures, closets, structures, appliances (if any), and the balcony are subject to change without notice to the Purchaser in order to comply with site conditions, municipal or governmental, structural, or architectural requirements, or for any reason at the sole, unfettered and absolute discretion of the Vendor. Units on lower floors may have less floor space due to thicker structural members, mechanical rooms, etc. while units on higher floors may have more floorspace. Bulkheads may not be shown on this plan and may be located in areas of the Unit as required for venting and mechanical systems. All areas and stated dimensions are approximate. Actual usable floor space, living area and square footage may vary from stated floor area. All illustrations are artist's concept only. Furniture is depicted for illustration purposes only & are not included. The unit shown may be the reverse of the unit purchased. The exact location of any balcony (if applicable) in relation to the unit layout may differ from that shown. The locations of the building and units shown are approximate only and are subject to change without notice to the Purchaser. E. & O.E. 10.08.19

UNIVERSAL CITY THREE - 2P

UNIT TYPE: 2 BEDROOM/2P
SUITE AREA: 753 sq.ft.
OUTDOOR AREA: 189 sq.ft.
TOTAL AREA: 942 sq.ft.



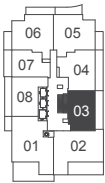
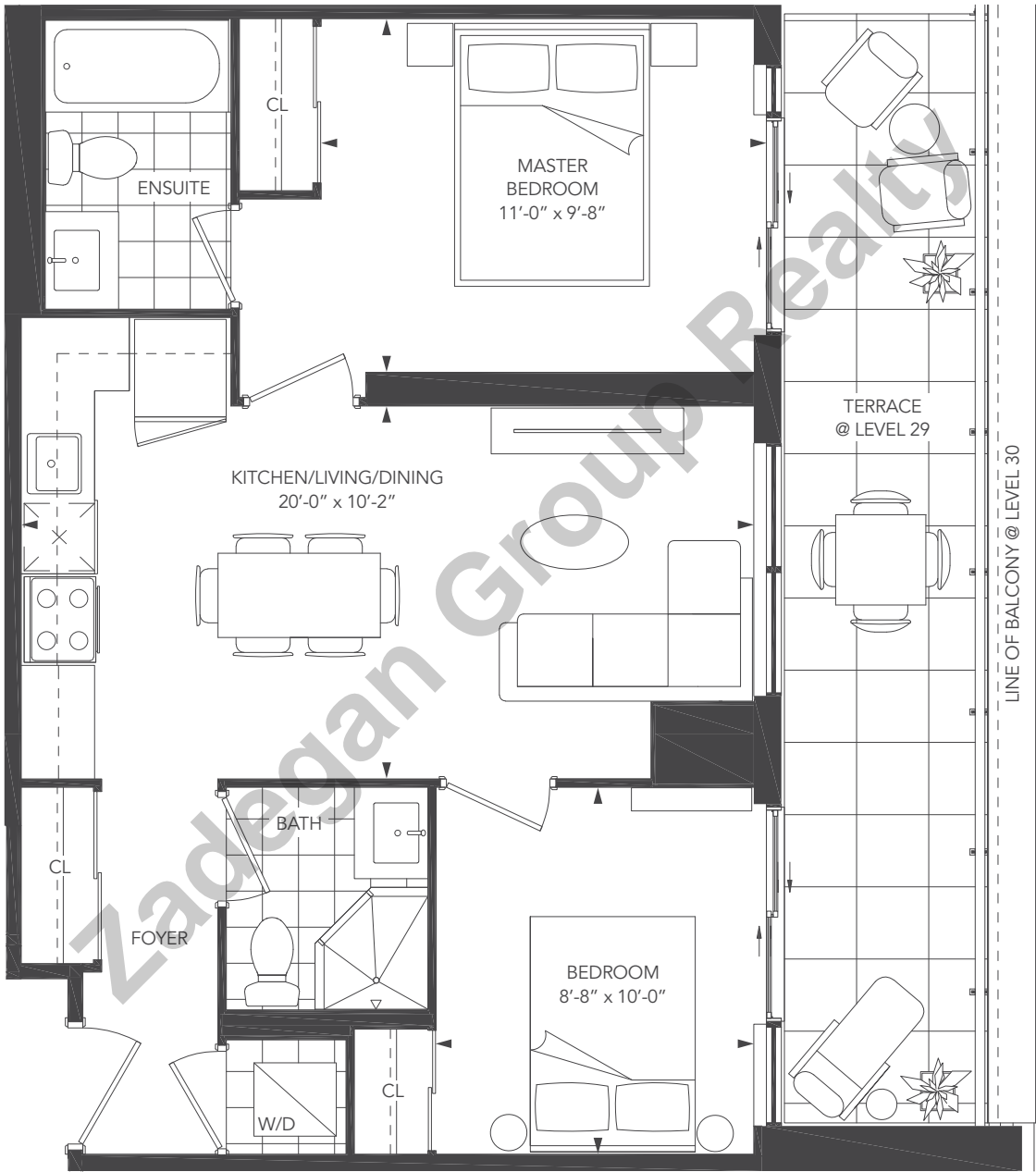
7th level



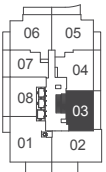
Note: Without limiting the generality of the terms and conditions of the agreement of purchase and sale, Purchasers are advised that all prices, figures, sizes, plans, specifications and information, including without limitation the size, location, design and layout of windows, doors, walls, fixtures, closets, structures, appliances (if any), and the balcony are subject to change without notice to the Purchaser in order to comply with site conditions, municipal or governmental, structural, or architectural requirements, or for any reason at the sole, unfettered and absolute discretion of the Vendor. Units on lower floors may have less floor space due to thicker structural members, mechanical rooms, etc. while units on higher floors may have more floorspace. Bulkheads may not be shown on this plan and may be located in areas of the Unit as required for venting and mechanical systems. All areas and stated dimensions are approximate. Actual usable floor space, living area and square footage may vary from stated floor area. All illustrations are artist's concept only. Furniture is depicted for illustration purposes only & are not included. The unit shown may be the reverse of the unit purchased. The exact location of any balcony (if applicable) in relation to the unit layout may differ from that shown. The locations of the building and units shown are approximate only and are subject to change without notice to the Purchaser. E. & O.E. 10.08.19

UNIVERSAL CITY THREE - 2Q

UNIT TYPE: 2 BEDROOM/2Q
SUITE AREA: 681 sq.ft.
OUTDOOR AREA: LEVEL 29: 173 sq.ft. LEVEL 30: 177 sq.ft.
TOTAL AREA: LEVEL 29: 854 sq.ft. LEVEL 30: 858 sq.ft.



29th level

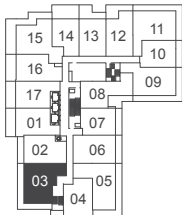


30th level

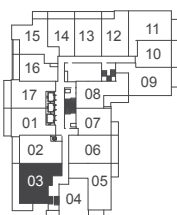


UNIVERSAL CITY THREE - 2A+D

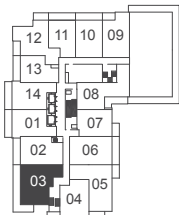
UNIT TYPE: 2 BEDROOM+DEN/2A+D
SUITE AREA: 861 sq.ft.
OUTDOOR AREA: LEVEL 2: 283 sq.ft. LEVEL 3-6: 278 sq.ft.
TOTAL AREA: LEVEL 2: 1,144 sq.ft. LEVEL 3-6: 1,139 sq.ft.



2nd level



3rd - 5th level



6th level



Note: Without limiting the generality of the terms and conditions of the agreement of purchase and sale, Purchasers are advised that all prices, figures, sizes, plans, specifications and information, including without limitation the size, location, design and layout of windows, doors, walls, fixtures, closets, structures, appliances (if any), and the balcony are subject to change without notice to the Purchaser in order to comply with site conditions, municipal or governmental, structural, or architectural requirements, or for any reason at the sole, unfettered and absolute discretion of the Vendor. Units on lower floors may have less floor space due to thicker structural members, mechanical rooms, etc. while units on higher floors may have more floorspace. Bulkheads may not be shown on this plan and may be located in areas of the Unit as required for venting and mechanical systems. All areas and stated dimensions are approximate. Actual usable floor space, living area and square footage may vary from stated floor area. All illustrations are artist's concept only. Furniture is depicted for illustration purposes only & are not included. The unit shown may be the reverse of the unit purchased. The exact location of any balcony (if applicable) in relation to the unit layout may differ from that shown. The locations of the building and units shown are approximate only and are subject to change without notice to the Purchaser. E. & O.E. 10.08.19

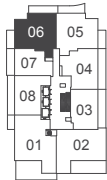
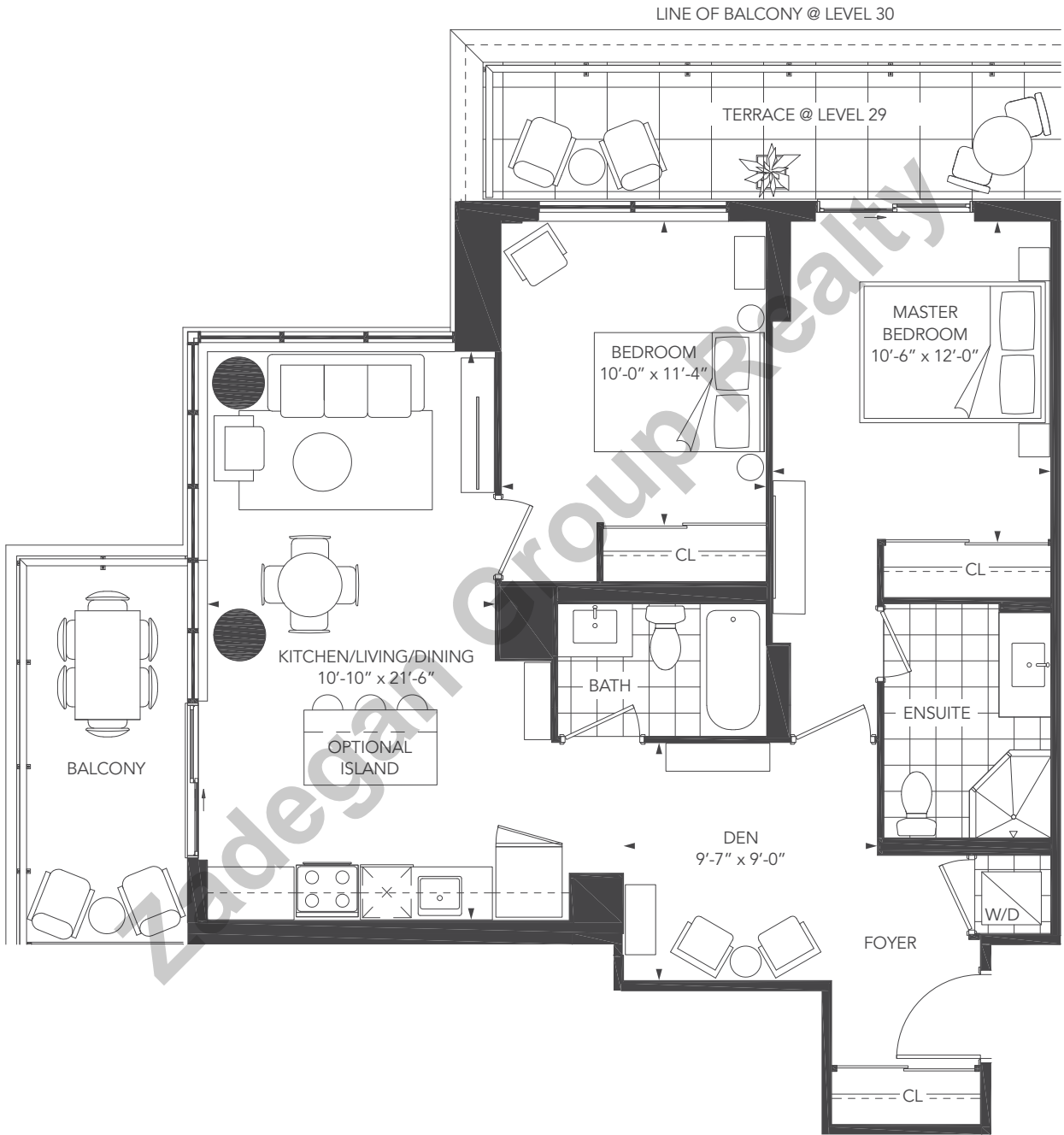
UNIVERSAL CITY THREE - 2B+D

UNIT TYPE:2 BEDROOM+DEN/2B+D

SUITE AREA:944 sq.ft.

OUTDOOR AREA:LEVEL 29: 214 sq.ft. LEVEL 30: 213 sq.ft.

TOTAL AREA:LEVEL 29: 1,158 sq.ft. LEVEL 30: 1,157 sq.ft.



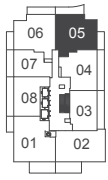
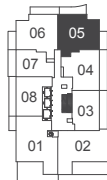
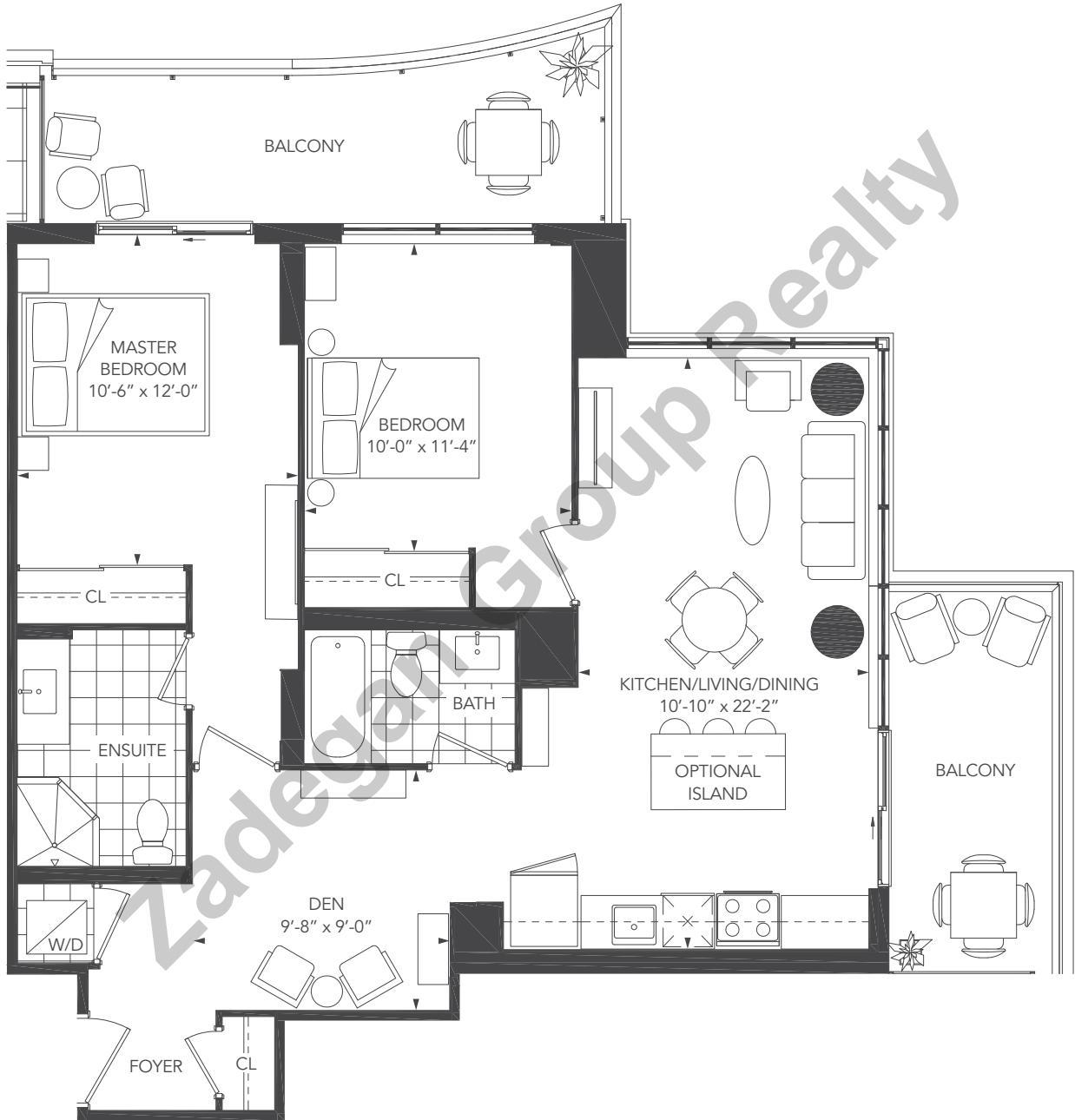
29th level

30th level



UNIVERSAL CITY THREE - 2B1+D

UNIT TYPE: 2 BEDROOM+DEN/2B1+D
SUITE AREA: 946 sq.ft.
OUTDOOR AREA: 222 sq.ft.
TOTAL AREA: 1,168 sq.ft.



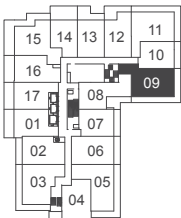
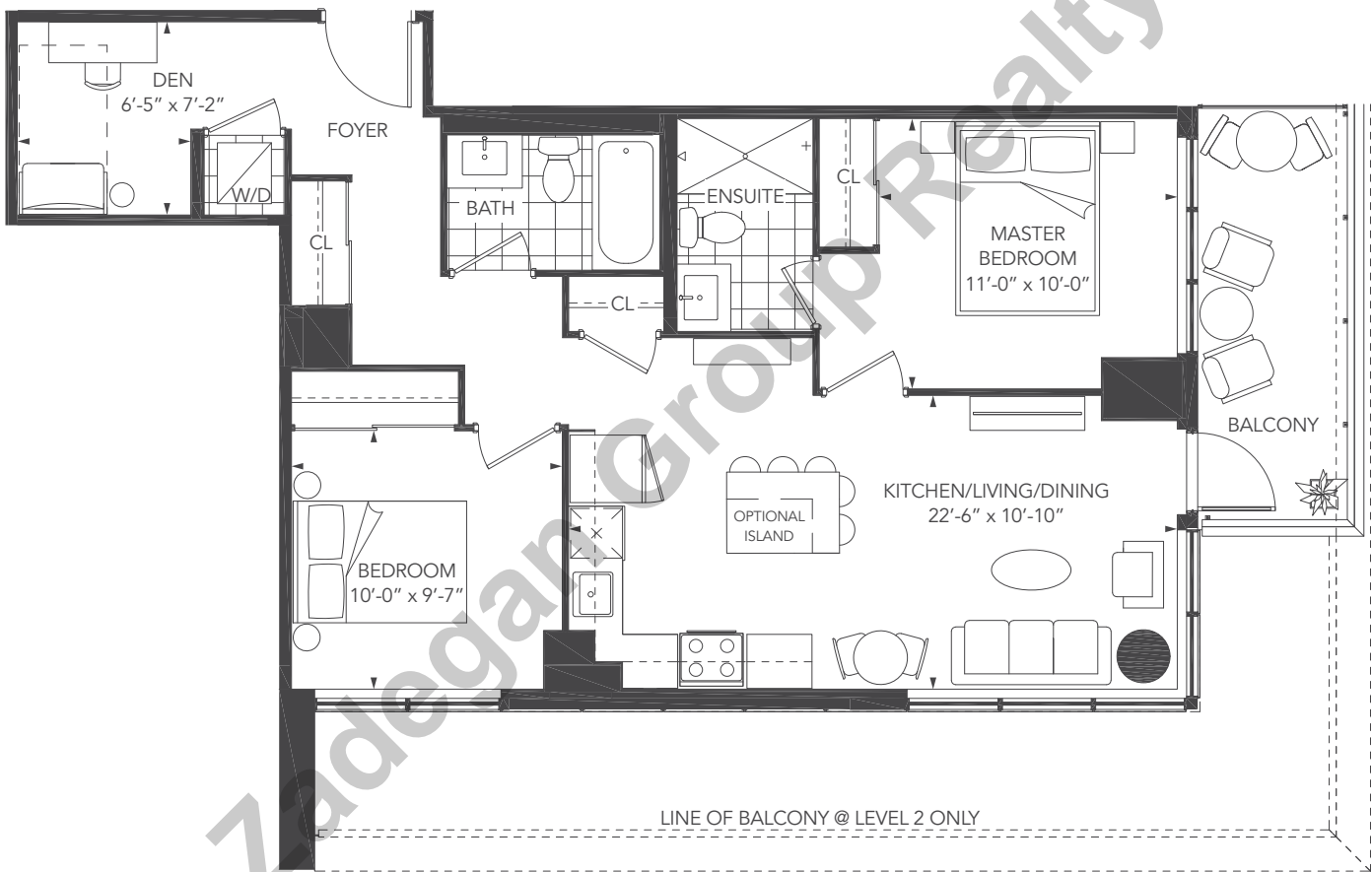
29th level

30th level

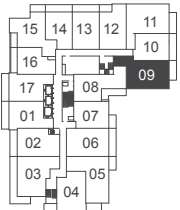


UNIVERSAL CITY THREE - 2C+D

UNIT TYPE: 2 BEDROOM+DEN/2C+D
SUITE AREA: 868 sq.ft.
OUTDOOR AREA: LEVEL 2: 298 sq.ft. LEVEL 3-5: 90 sq.ft.
TOTAL AREA: LEVEL 2: 1,166 sq.ft. LEVEL 3-5: 958 sq.ft.



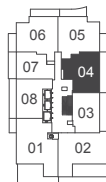
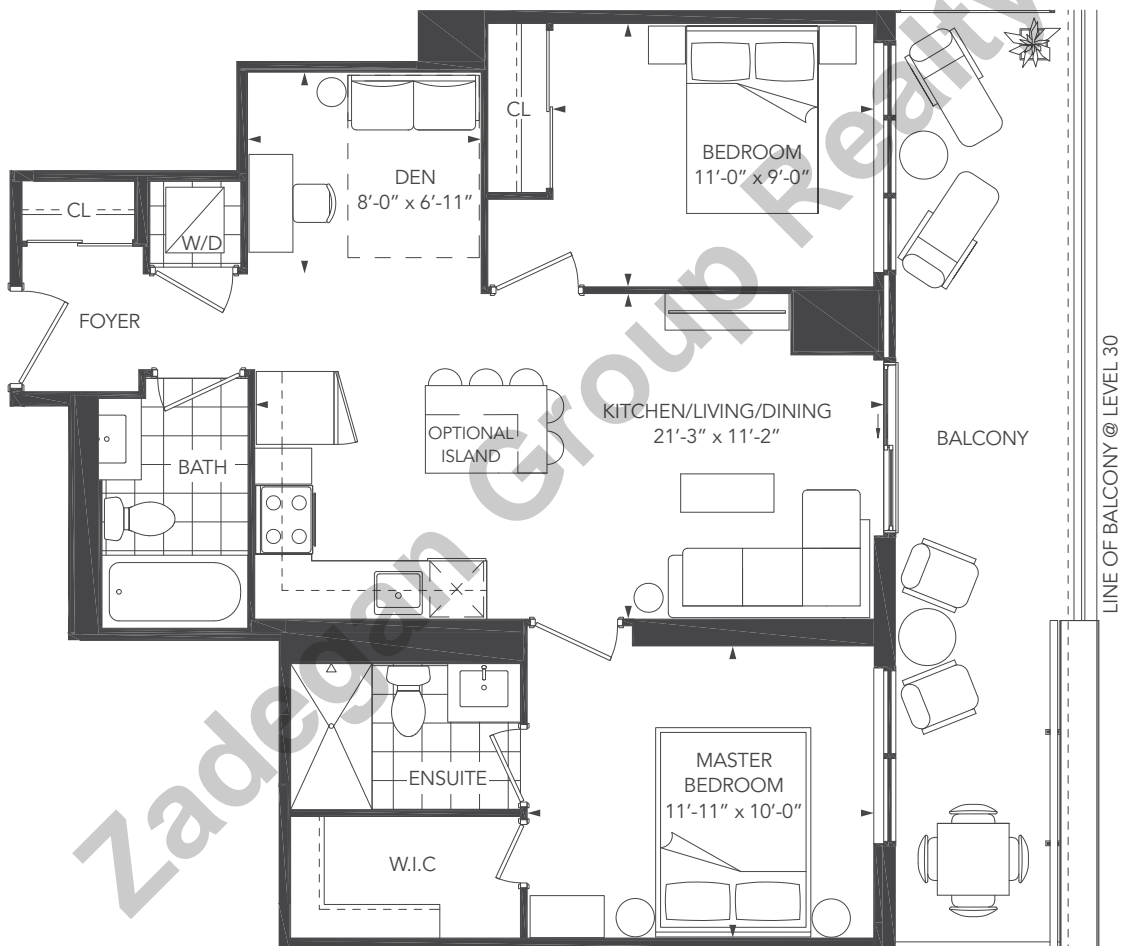
2nd level



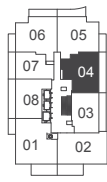
3rd - 5th level



UNIT TYPE: 2 BEDROOM+DEN/2D+D
SUITE AREA: 818 sq.ft.
OUTDOOR AREA: LEVEL 29: 197 sq.ft. LEVEL 30: 186 sq.ft.
TOTAL AREA: LEVEL 29: 1,015 sq.ft. LEVEL 30: 1,004 sq.ft.



29th level

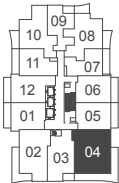
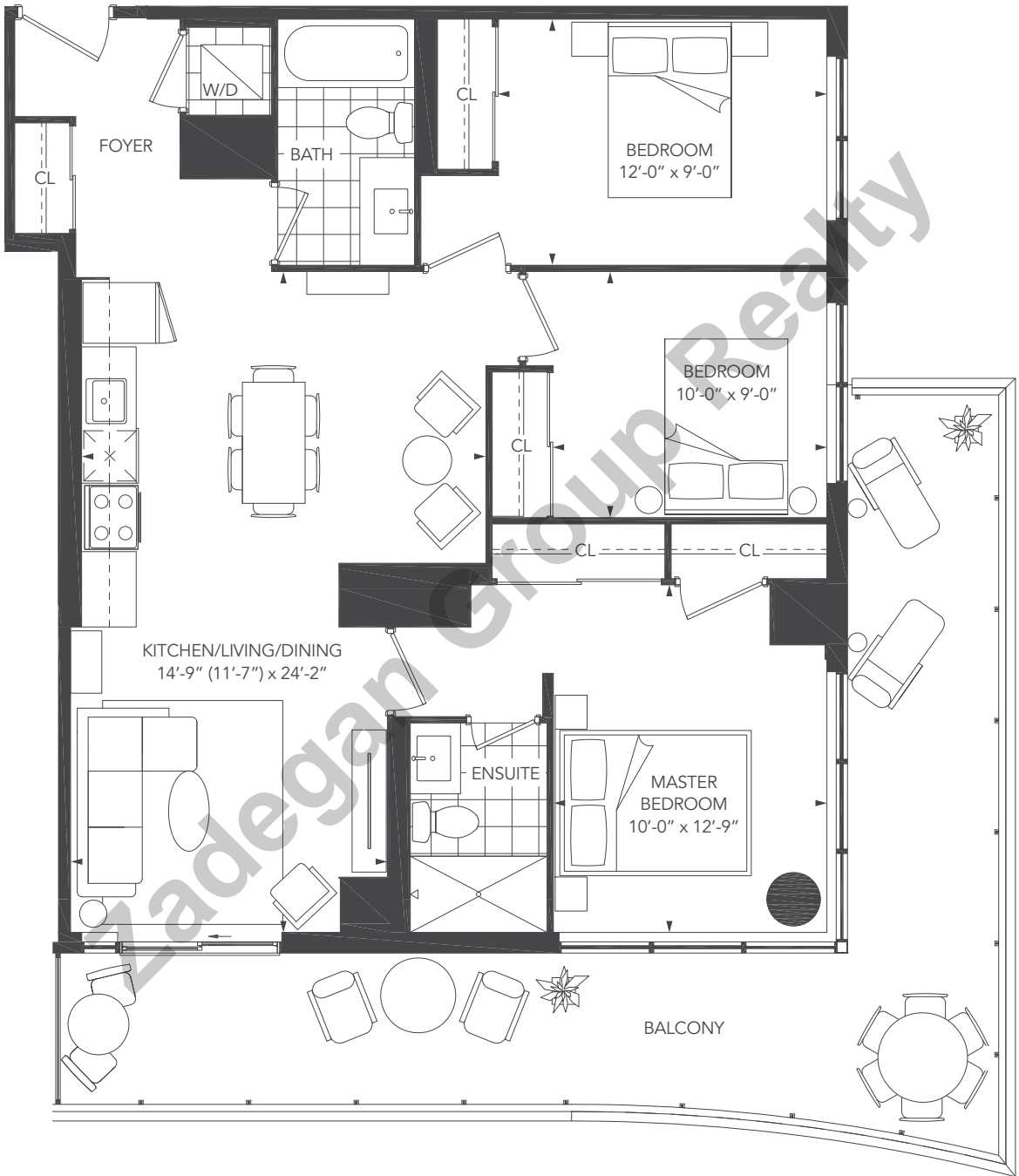


30th level



UNIVERSAL CITY THREE - 3A

UNIT TYPE: 3 BEDROOM/3A
SUITE AREA: 1,026 sq.ft.
OUTDOOR AREA: 331 sq.ft.
TOTAL AREA: 1,357 sq.ft.



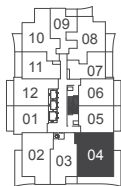
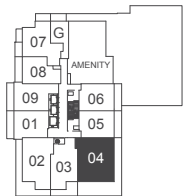
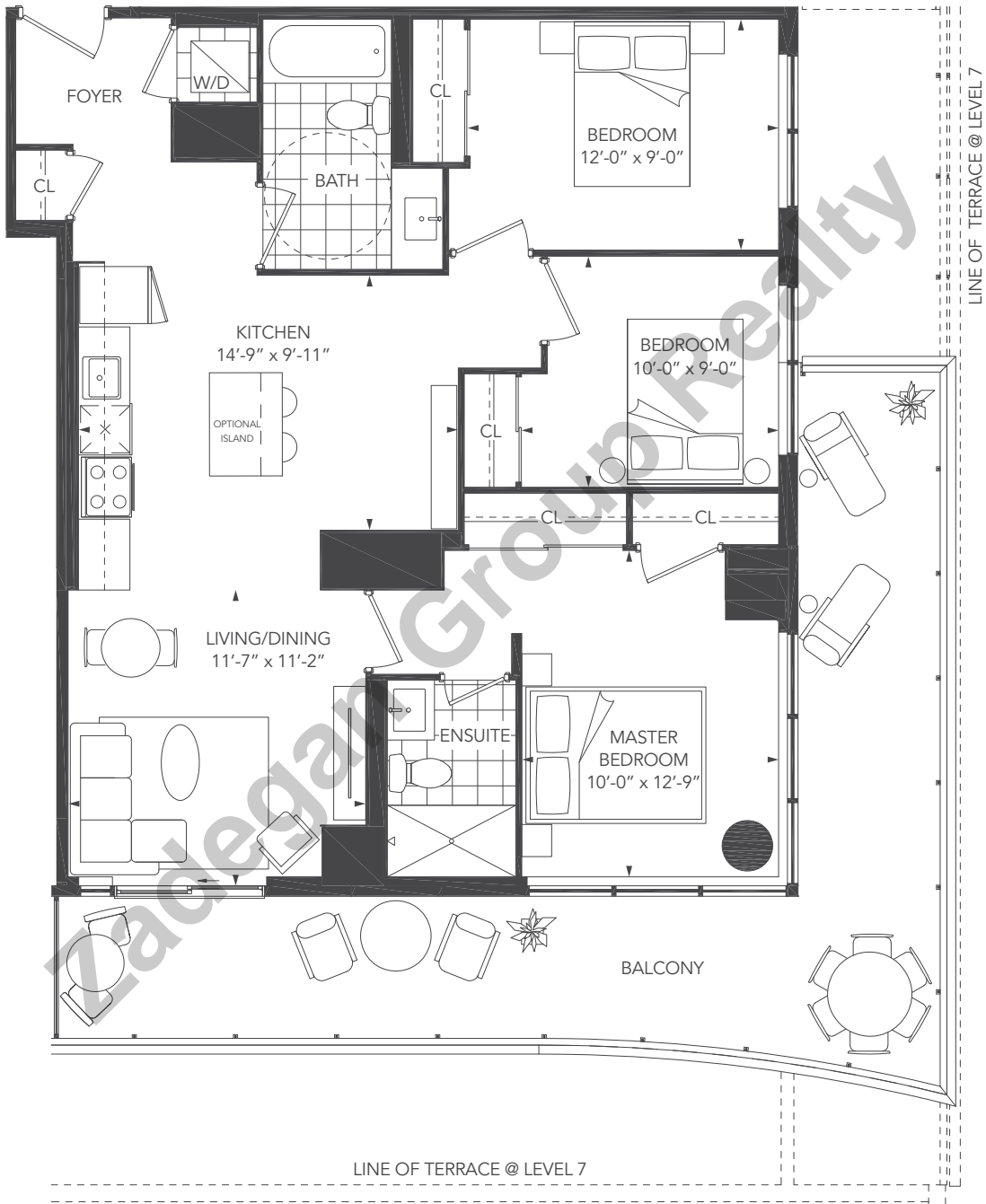
11th - 28th level



Note: Without limiting the generality of the terms and conditions of the agreement of purchase and sale, Purchasers are advised that all prices, figures, sizes, plans, specifications and information, including without limitation the size, location, design and layout of windows, doors, walls, fixtures, closets, structures, appliances (if any), and the balcony are subject to change without notice to the Purchaser in order to comply with site conditions, municipal or governmental, structural, or architectural requirements, or for any reason at the sole, unfettered and absolute discretion of the Vendor. Units on lower floors may have less floor space due to thicker structural members, mechanical rooms, etc. while units on higher floors may have more floorspace. Bulkheads may not be shown on this plan and may be located in areas of the Unit as required for venting and mechanical systems. All areas and stated dimensions are approximate. Actual usable floor space, living area and square footage may vary from stated floor area. All illustrations are artist's concept only. Furniture is depicted for illustration purposes only & are not included. The unit shown may be the reverse of the unit purchased. The exact location of any balcony (if applicable) in relation to the unit layout may differ from that shown. The locations of the building and units shown are approximate only and are subject to change without notice to the Purchaser. E. & O.E. 10.08.19

UNIVERSAL CITY THREE - 3A1 (BF)

UNIT TYPE: 3 BEDROOM/3A1
SUITE AREA: 1,026 sq.ft.
OUTDOOR AREA: LEVEL 7: 598 sq.ft. LEVEL 8-10: 331 sq.ft.
TOTAL AREA: LEVEL 7: 1,624 sq.ft. LEVEL 8-10: 1,357 sq.ft.



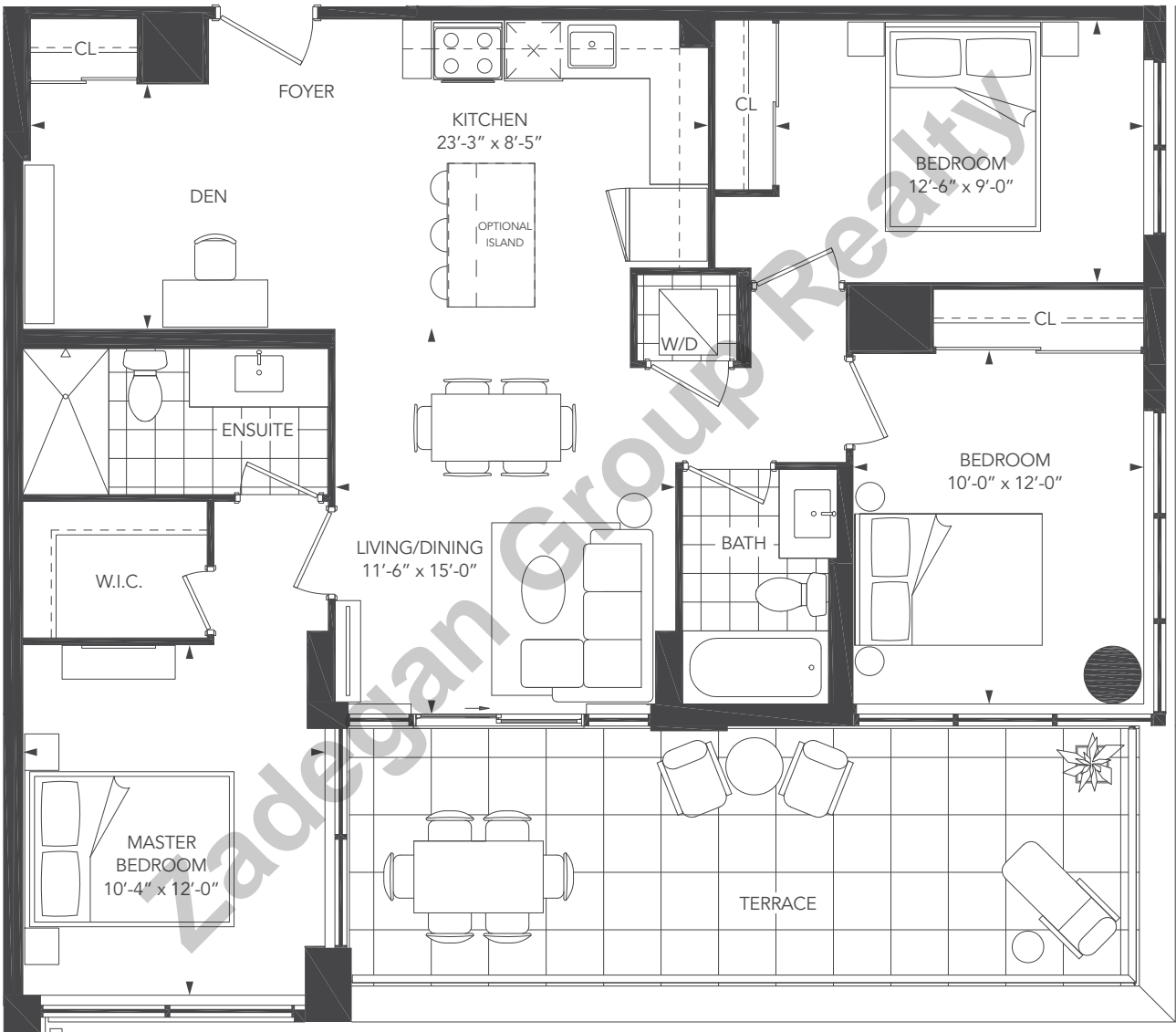
7th level

8th - 10th level



UNIVERSAL CITY THREE - 3B + DEN

UNIT TYPE: 3 BEDROOM/3B
SUITE AREA: 1,107 sq.ft.
OUTDOOR AREA: 242 sq.ft.
TOTAL AREA: 1,349 sq.ft.

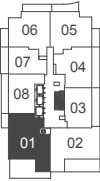
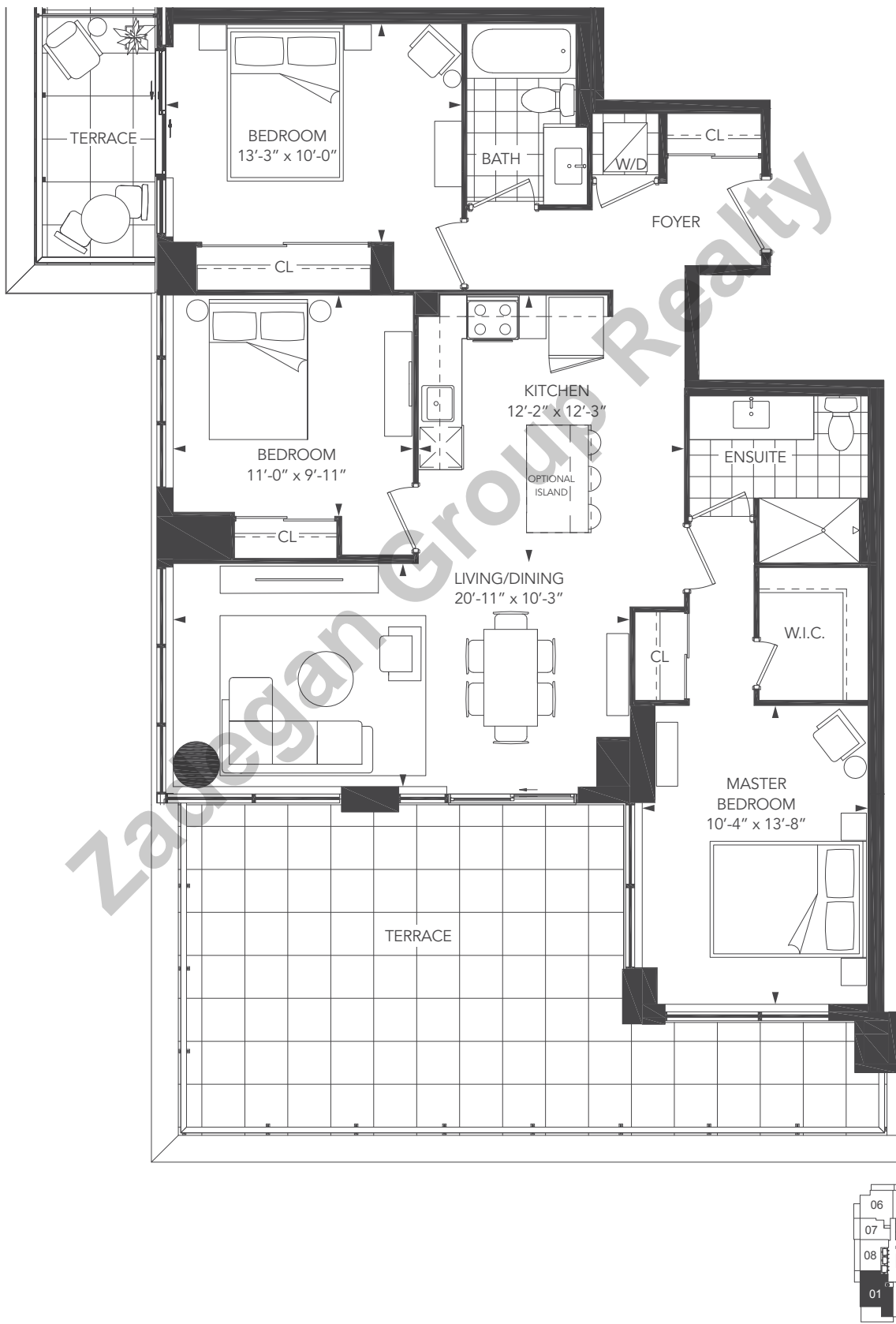


29th level



Note: Without limiting the generality of the terms and conditions of the agreement of purchase and sale, Purchasers are advised that all prices, figures, sizes, plans, specifications and information, including without limitation the size, location, design and layout of windows, doors, walls, fixtures, closets, structures, appliances (if any), and the balcony are subject to change without notice to the Purchaser in order to comply with site conditions, municipal or governmental, structural, or architectural requirements, or for any reason at the sole, unfettered and absolute discretion of the Vendor. Units on lower floors may have less floor space due to thicker structural members, mechanical rooms, etc. while units on higher floors may have more floorspace. Bulkheads may not be shown on this plan and may be located in areas of the Unit as required for venting and mechanical systems. All areas and stated dimensions are approximate. Actual usable floor space, living area and square footage may vary from stated floor area. All illustrations are artist's concept only. Furniture is depicted for illustration purposes only & are not included. The unit shown may be the reverse of the unit purchased. The exact location of any balcony (if applicable) in relation to the unit layout may differ from that shown. The locations of the building and units shown are approximate only and are subject to change without notice to the Purchaser. E. & O.E. 10.08.19

UNIT TYPE: 3 BEDROOM/3C
SUITE AREA: 1,197 sq.ft.
OUTDOOR AREA: 438 sq.ft.
TOTAL AREA: 1,635 sq.ft.



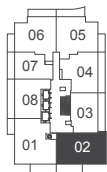
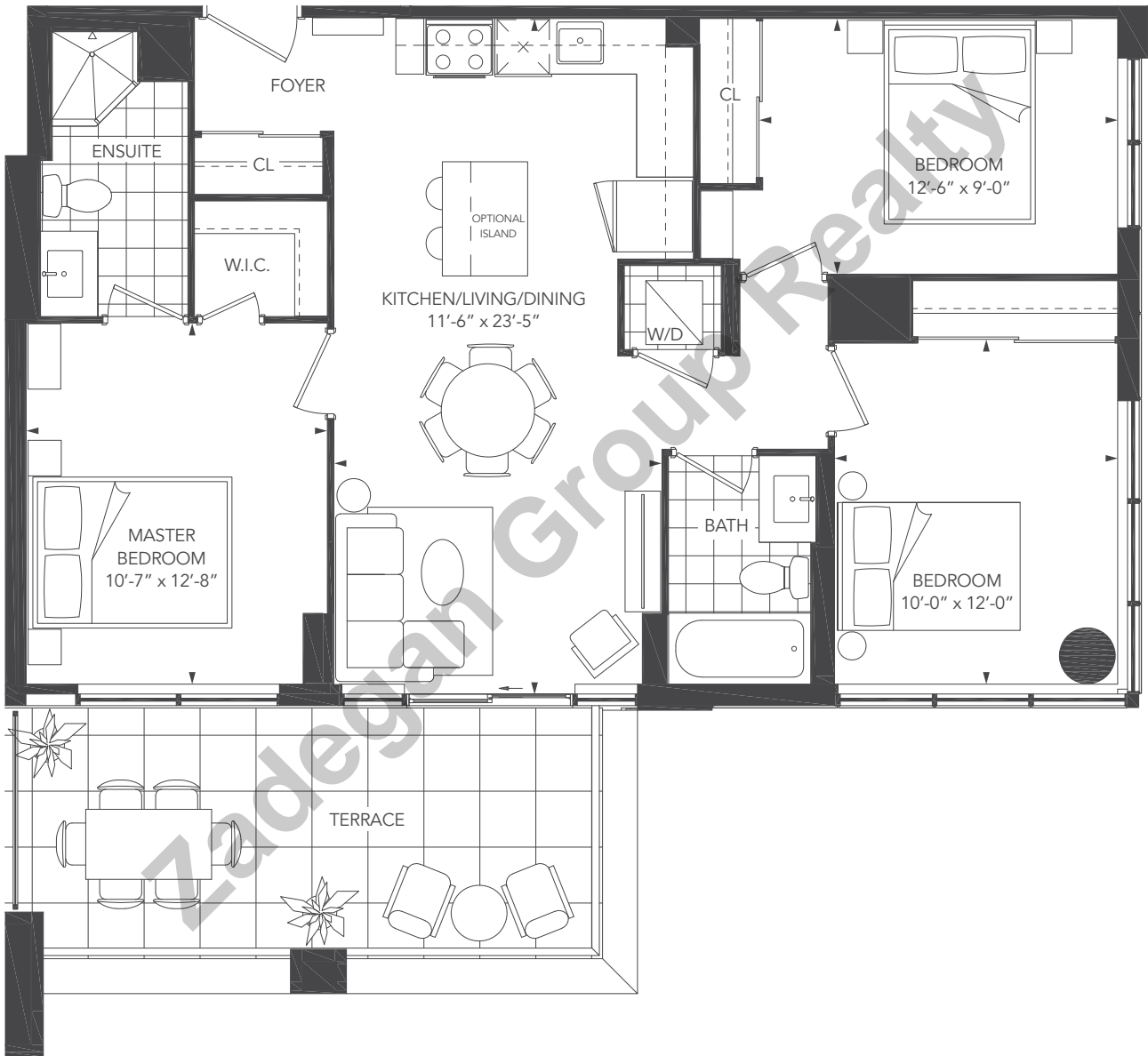
29th level



Note: Without limiting the generality of the terms and conditions of the agreement of purchase and sale, Purchasers are advised that all prices, figures, sizes, plans, specifications and information, including without limitation the size, location, design and layout of windows, doors, walls, fixtures, closets, structures, appliances (if any), and the balcony are subject to change without notice to the Purchaser in order to comply with site conditions, municipal or governmental, structural, or architectural requirements, or for any reason at the sole, unfettered and absolute discretion of the Vendor. Units on lower floors may have less floor space due to thicker structural members, mechanical rooms, etc. while units on higher floors may have more floorspace. Bulkheads may not be shown on this plan and may be located in areas of the Unit as required for venting and mechanical systems. All areas and stated dimensions are approximate. Actual usable floor space, living area and square footage may vary from stated floor area. All illustrations are artist's concept only. Furniture is depicted for illustration purposes only & are not included. The unit shown may be the reverse of the unit purchased. The exact location of any balcony (if applicable) in relation to the unit layout may differ from that shown. The locations of the building and units shown are approximate only and are subject to change without notice to the Purchaser. E. & O.E. 10.08.19

UNIVERSAL CITY THREE - 3D

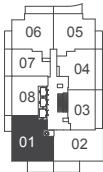
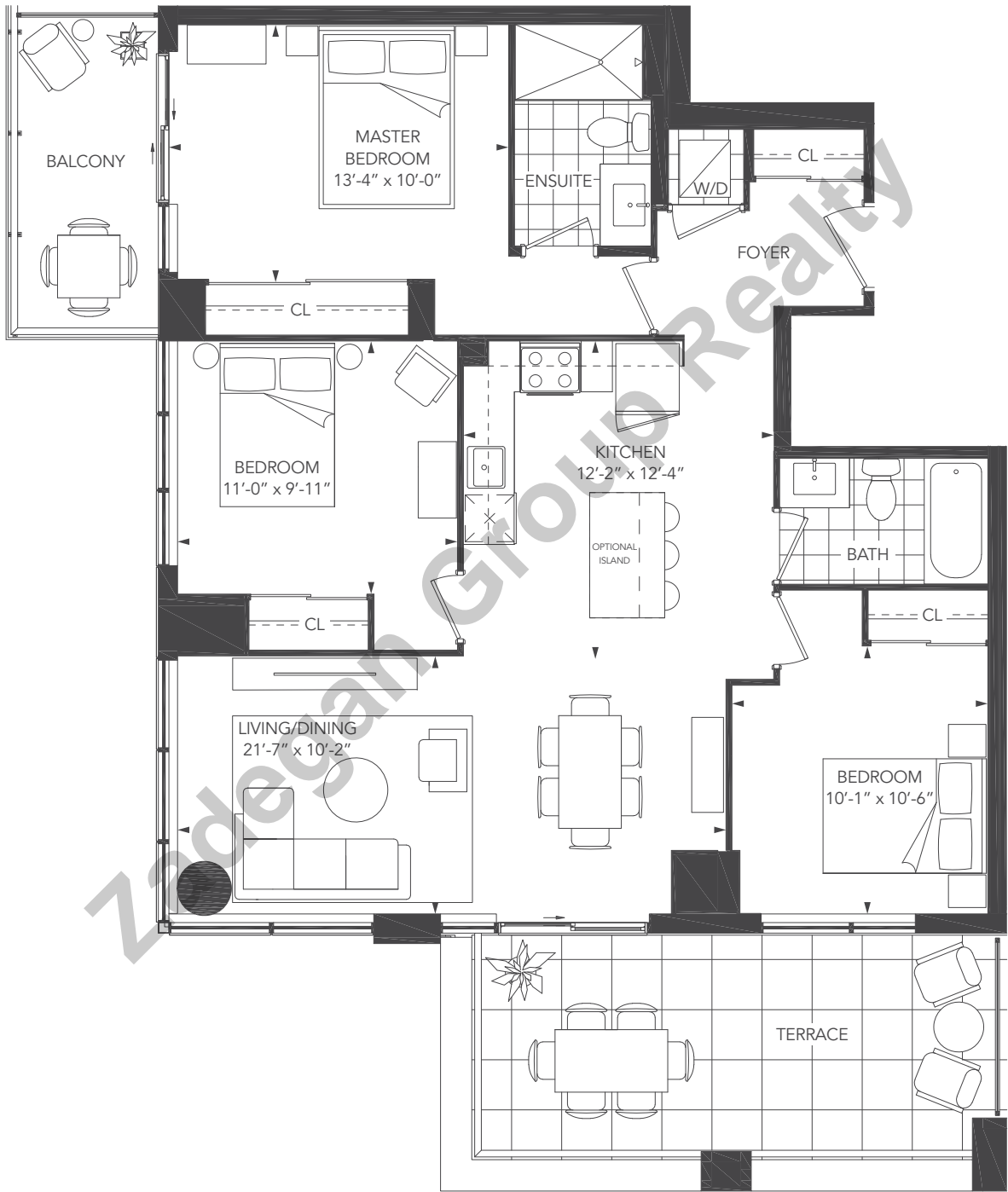
UNIT TYPE: 3 BEDROOM/3D
SUITE AREA: 990 sq.ft.
OUTDOOR AREA: 184 sq.ft.
TOTAL AREA: 1,174 sq.ft.



30th level



UNIT TYPE: 3 BEDROOM/3E
SUITE AREA: 1,084 sq.ft.
OUTDOOR AREA: 257 sq.ft.
TOTAL AREA: 1,341 sq.ft.



30th level



Note: Without limiting the generality of the terms and conditions of the agreement of purchase and sale, Purchasers are advised that all prices, figures, sizes, plans, specifications and information, including without limitation the size, location, design and layout of windows, doors, walls, fixtures, closets, structures, appliances (if any), and the balcony are subject to change without notice to the Purchaser in order to comply with site conditions, municipal or governmental, structural, or architectural requirements, or for any reason at the sole, unfettered and absolute discretion of the Vendor. Units on lower floors may have less floor space due to thicker structural members, mechanical rooms, etc. while units on higher floors may have more floorspace. Bulkheads may not be shown on this plan and may be located in areas of the Unit as required for venting and mechanical systems. All areas and stated dimensions are approximate. Actual usable floor space, living area and square footage may vary from stated floor area. All illustrations are artist's concept only. Furniture is depicted for illustration purposes only & are not included. The unit shown may be the reverse of the unit purchased. The exact location of any balcony (if applicable) in relation to the unit layout may differ from that shown. The locations of the building and units shown are approximate only and are subject to change without notice to the Purchaser. E. & O.E. 10.08.19