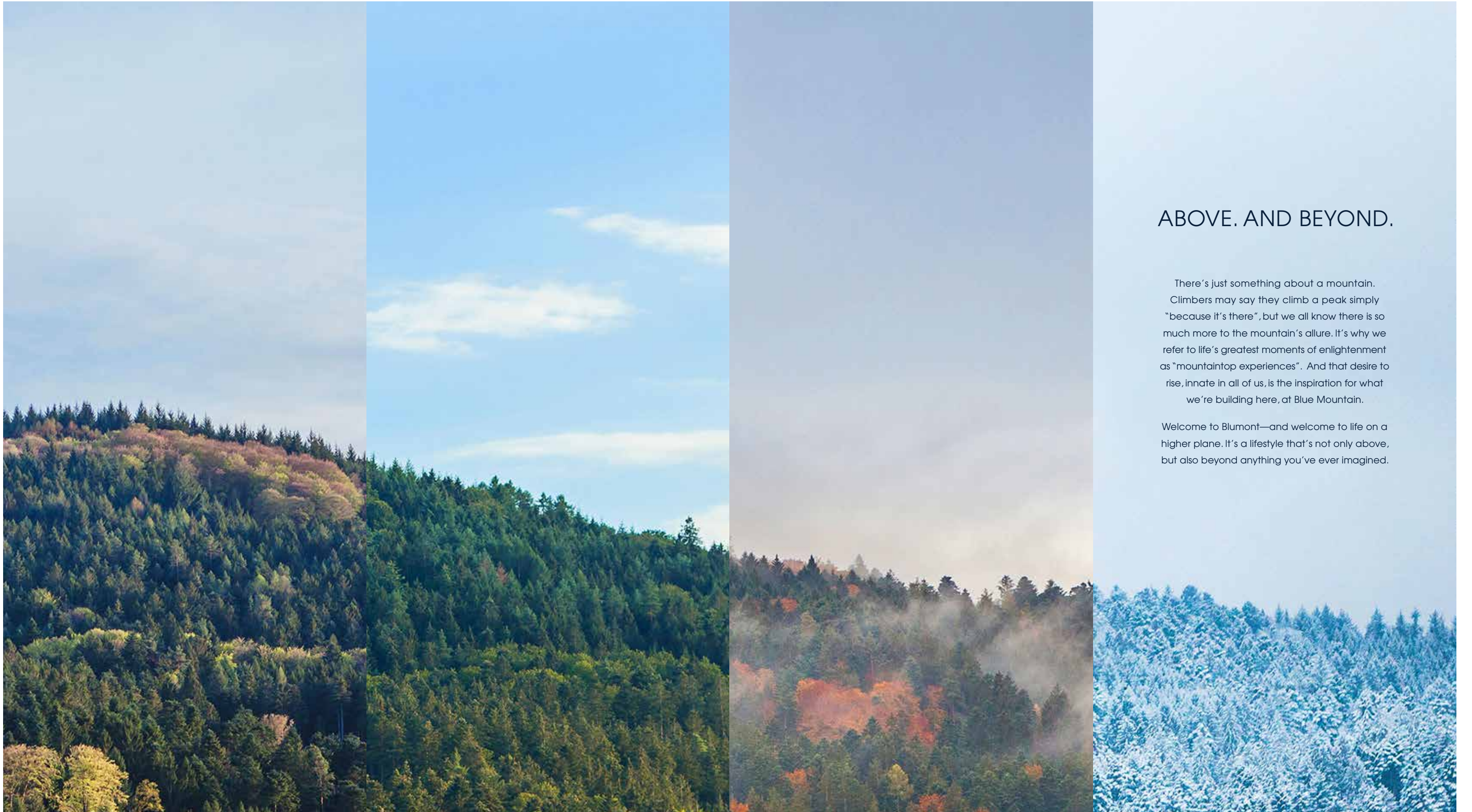




MOVE UP TO MOUNTAIN LIVING.
IN THE HEART OF BLUE MOUNTAIN.



ABOVE. AND BEYOND.

There's just something about a mountain. Climbers may say they climb a peak simply "because it's there", but we all know there is so much more to the mountain's allure. It's why we refer to life's greatest moments of enlightenment as "mountaintop experiences". And that desire to rise, innate in all of us, is the inspiration for what we're building here, at Blue Mountain.

Welcome to Blumont—and welcome to life on a higher plane. It's a lifestyle that's not only above, but also beyond anything you've ever imagined.

ONTARIO’S PEAK EXPERIENCE

BLUE MOUNTAINS

Standing at the summit of the storied mountain itself, the waters of Georgian Bay shimmering in the distance, it’s easy to see why Blue Mountain has become Ontario’s premier four-season resort destination. Here, high above the constraints of the everyday, the rarified air provides the perfect setting in which to relax, refresh, revitalize and recharge. And of course, enjoy all the recreational opportunities you seek, too. From sand to snow, from fairways to trails, there are no limits to the ways you can enjoy the great outdoors. For a life lived to the full, come to the mountain.



mountain time

CONTENTS

INTRODUCTION

Ontario’s Peak Experience 4

Luxury at a Higher Level 12

Surrounded by the Spectacular: Blue Mountain Living 14

COMMUNITY HIGHLIGHTS

Blue Mountain Resort 16

Take your Summer to New Heights 18

Enjoy Blue’s Best Greens 22

Mountain Living: Just Add Water 24

Parks and Trails 26

Heating up your Winter 30

Mountain Living After Dark 36

Rest. Rejuvenate. Revive. Mountain-Style. 40

Local Amenities 42

About Primont 44

BLUMONT HOMES

About Blumont 47

Floorplans 53





time to reflect

LUXURY AT A HIGHER LEVEL

BLUMONT

Nestled at the foot of the mountain and sheltered in a tree-filled valley, the setting for Blumont blends all of the best elements of the natural world. And the experience is instantly elevated when you discover the homes themselves located within. Blumont is an uncompromising collection of stunning chalet-style fully detached homes, all situated on expansive 60-foot estate lots, and each offering you the height of luxury, privacy and space. And while the beauty of nature is indeed all around you, Blumont is also just steps from the shops, restaurants and nightlife of Blue Mountain Village—proving that mountain living doesn't have to mean leaving the best aspects of city life behind. And there's so much more that's just outside your door.

SURROUNDED BY THE SPECTACULAR

Blumont gives you access to a full four seasons of fun and relaxation—just take your pick of both. Wintertime means skiing the slopes of Blue Mountain, plus taking advantage of activities like skating, snowshoeing and winter tours. And of course, relaxing by the fire at night, ensconced in the warmth and luxury of your Blumont home. While spring brings the opportunity to get out and enjoy cycling, golf, hiking, and a long list of other outdoor activities. And just a little further into the season, swimming, sailing or simply relaxing on the beautiful beaches of Georgian Bay.



CAVE EXPLORATION

Explore a different aspect of the Blue Mountain terrain—deep underground as part of a unique guided cave tour.

NATURE TRAILS

Hikers will be delighted to discover the over 285 kilometres of trails threaded throughout the region.

BLUE MOUNTAIN LOOKOUT

On a clear day from this vantage point high atop the Escarpment, you can see as far as Wasaga Beach and Christian Island to the northeast.

BLUE MOUNTAIN RESORT

The premier destination for skiers and snowboarders from across Southern Ontario, and beyond.

BLUE MOUNTAIN VILLAGE

The après-ski destination that has it all: great restaurants, charming pubs, and exciting nightlife all year round.

BLUMONT



SCANDINAVE SPA

Relax in the Scandinavian baths, plus take advantage of a host of other treatments at this world-class Blue Mountain spa.

MONTEIRA GOLF CLUB

An award-winning golf course in a beautiful valley setting, just a short putt from your Blumont home.

GEORGIAN BAY

From anywhere in the Blue Mountain area, the turquoise waters of this boater's and bather's paradise are never far away.



ABOUT THE BLUE MOUNTAIN RESORT

The pinnacle of recreational destinations, Blue Mountain is the province’s largest mountain village resort, and it offers a full range of amenities and activities that rival any in the country. It starts with great skiing... but the slopes are only the beginning. It’s time to raise your expectations for what a resort destination can be.

Blue Mountain has spring, summer and fall covered, too. If the ultimate in luxury is choice, the Blue Mountain area gives you the opportunity to live at a higher level than anywhere else in the province.

BLUE MOUNTAIN FACTS

TERRAIN

Elevation: 720 feet / 220 metres
Skiable Area: 364 acres / 147 hectares

TRAIL SYSTEM

Trails: 42 named trails
Night Trails: 30 lit night trails
Longest Run: Gord’s Groove – 1 mile / 1.6 kilometres

SNOW

Snowmaking: 360 acres / 145 hectares

LIFT SYSTEM

Summer Gondola: 1
High-Speed Six: 5
Quad: 1
Triple: 1
Surface Lifts: 4
Uphill Capacity: 26,750 per hour

ACTIVITIES & AMENITIES

- Apex bag jump
- Axe throwing
- Blue Mountain beach
- Canoeing and kayaking
- Canopy climb net
- Mini-putt
- Wall climbing
- Gondola
- Hike
- Skiing and snowboarding
- Tubing
- Snow shoeing
- Golf
- Mountain biking and bike park
- High ropes
- Zipline
- Concerts
- Festivals
- Restaurants
- Shopping
- Spas
- Apple-picking
- Lookout



TAKE YOUR SUMMER TO NEW HEIGHTS

The gentle spring breezes coming inland from Georgian Bay signal the beginning of a different kind of outdoor enjoyment. Make the most of the warmer seasons with activities like tennis, zip-lining through the Blue Mountains, cave exploration, cycling and much more, throughout the Blue Mountain area.



CAVING & SCENIC EXPLORATION

BLUE MOUNTAIN RESORT, COLLINGWOOD
1 (833) 583-2583

There's a whole world to explore underneath the mountain, too. For those interested in a different kind of Blue Mountain experience, you can take a guided tour of the area's caves— and descend as far as 70 feet underground, fully equipped with helmets and headlamps.

CYCLING & MOUNTAIN BIKING

BLUE MOUNTAIN RESORT, COLLINGWOOD
1 (833) 583-2583

Mountain living should of course include mountain biking, too. Blue Mountain gives you access to Ontario's largest lift-accessed bike park, with a choice of trails designed to accommodate everyone from beginner cyclists to seasoned mountain-biking veterans. For a more leisurely kind of ride, the Georgian Trail runs from the Municipality of Meaford through to the town of Collingwood, and is popular with recreational cyclists and families.

TENNIS

BAYVIEW TENNIS COURT, 60 BAY ST. EAST, THORNHURST
(519) 387-2252

Located in picturesque Bayview Park, the Bayview Tennis Courts are open to the public seven days a week throughout the season and offer private and semi-private lessons for youths and adults, after-school programs, summer camps and more.



surround yourself with nature

ENJOY BLUE'S BEST GREENS

Perfectly manicured greens, sheltered in the shadow of the mountain—it's hard to imagine a more ideal setting to gather with other players and nurture your love of the game. You can tee off at your choice of six award-winning golf courses—including Monterra Golf and Blue Mountain Golf & Country Club, both located right at Blue Mountain Resort.



MONTERRA GOLF

**220 JOZO WEIDER BLVD., THE BLUE MOUNTAINS
(705) 445-0231**

Open to the public from mid-May to late October, Monterra treats you to rolling bent grass fairways nestled in a setting of ravines, creeks and lakes.

BLUE MOUNTAIN GOLF & COUNTRY CLUB

**706 TENTH LINE, COLLINGWOOD
(705) 445-3911**

A semi-private club with a private club feel, Blue Mountain Golf & Country Club offers you the opportunity to play some of the most meticulously maintained fairways and greens in Ontario. Plus take advantage of exclusive club amenities off the course, as well.

THE GEORGIAN BAY CLUB

**516689 7TH LINE, CLARKSBURG
(519) 599-9949**

Designed by world-renowned golf course architects Hurdzan Fry, Georgian Bay was created to be enjoyable to play for golfers at all skill levels.

LORA BAY CLUB

**109 EAST RIDGE DR., THORNBURY
(519) 599-7500**

Enjoy tee decks ranging from 5,100 to 7,100 yards, all in a tranquil setting just steps from the water's edge.

THE TOMAHAWK GOLF COURSE

**417230 10TH LINE, THORNBURY
(519) 599-3131 x 350**

A great place for beginners to get a feel for the game, with enough course challenges along the way to delight more experienced players, too.

CRANBERRY GOLF COURSE

**27 WEST HARBOUR ST., COLLINGWOOD
(705) 444-2699**

This semi-private club is known for its fun, inviting and highly social atmosphere. It's also home to the area's largest outdoor restaurant patio.

MOUNTAIN LIVING: JUST ADD WATER.

The mountain air can enliven and inspire—and it’s easy to focus solely on the shift in mood and energy that proximity to the mountain can bring. But let’s not forget that Blumont offers recreational opportunities that aren’t just centred around the mountain itself. Namely, those that can be found on the innumerable rivers and lakes that dot the region—not to mention the endless expanse of beautiful Georgian Bay itself. It’s true that water is as essential an element as earth, and here, you’ll find it in abundance.

Imagine entire summers spent out on the water, by it, or in it... fishing, boating, swimming, or simply relaxing on the beach. Enjoy the luxury of experiencing every aspect of the natural environment, just outside your home. And because Blumont is located midway between the mountain and the shore, and just a stone’s throw away from each, it truly gives you access to the best of both worlds.



BEACHES AND WATER ACTIVITIES

Explore various options for kayaking, canoeing and paddleboarding—whether that’s out on Georgian Bay or one of the many other nearby lakes and rivers. Nearby beaches include: Blue Mountain Private Beach Club, Sauble Beach, Hibou Conservation Area, Little River Beach, Wasaga Beach and Memorial Park Beach.

PARKS AND TRAILS

As if the area didn't already offer enough different ways to experience the natural world, there are a total of 260 kilometres of hiking trails throughout the region, plus dozens of area parks for you to explore, as well. Season after season, year after year, you'll find something new to discover, all close to home.





be in awe

HEATING UP YOUR WINTER

Peak experiences are even better when they're shared. Which is why the Blue Mountain area is home to so many private ski clubs, each offering you the opportunity to ski, snowboard, socialize and make the most of mountain living, together with other likeminded members.



COLLINGWOOD AREA SKI CLUBS

ALPINE SKI CLUB

**17-242 ARROWHEAD RD., THE BLUE MOUNTAINS
(705) 445-0339**

Voted one of the Top 9 Private Ski Resorts in the world by CNN Travel, Alpine Ski Club offers its members an on-hill experience unlike any other.

BEAVER VALLEY SKI CLUB

**100 PIONEER DR., MARKDALE
(519) 986-2520**

Known for its signature "Avalanche" run, Beaver Valley Ski Club offers a relaxed atmosphere where families can connect, build new friendships and simply enjoy their time on the slopes.

CRAIGLEITH SKI CLUB

**164 CRAIGLEITH RD., THE BLUE MOUNTAINS
(705) 445-3847**

Craigleith prides itself on its home-away-from-home feel. And with 32 beautifully groomed trails, ranging from easy to expert, there's even more reason to call this club home.

GEORGIAN PEAKS SKI CLUB

**104 WENSLEY ST., THORNBURY
(519) 599-6771**

This club offers members the highest quality instructional programs for all ages, interests and abilities—as well as the chance to be part of a vibrant, close-knit community united in their love of the sport.

OSLER BLUFF SKI CLUB

795534 THE BLUE MOUNTAINS CLEARVIEW TOWNLINE, THE BLUE MOUNTAINS | (705) 445-4507

Enjoy a truly private recreational environment where you can engage with others who share your love of skiing/boarding and the great outdoors.

TORONTO SKI CLUB

**796456 GREY COUNTY RD 19., THE BLUE MOUNTAINS
(705) 445-1890**

From its clubhouse located at the base of Blue Mountain, Toronto Ski Club offers opportunities for people of all ages and stages to socialize, hone their skills and simply enjoy the slopes.

CROSS COUNTRY SKIING

Because downhill isn't the only game in town, you can enjoy cross country skiing in a variety of locations, as well. The Nordic Adventure Centre, for example, is home to 27 kilometres of groomed terrain, perfect for both classic and skate skiers.



OUTDOOR SKATING

Situated right atop Blue Mountain, the recently created Woodview Mountaintop Skating Trail is a 1.1 kilometre trail through the forest that treats you to stunning views of the Niagara Escarpment as you skate.



shimmering landscapes

MOUNTAIN LIVING AFTER DARK

While the night-skiing lights may be glowing on the mountain above, a different kind of electricity fills the valley below—not only in winter but spring, summer and fall, too. The Blue Mountain area pulses with great nightlife and offers great dining experiences, as well.

LIVE MUSIC AND EVENTS

From spring to fall, the Shipyards Amphitheatre showcases great entertainment designed to delight the whole family, right along the shore of sparkling South Georgian Bay.

FAVOURITE LOCAL SPOTS

Rusty's at Blue
M.J. Byrne's Irish Pub
Kaytoo
Tholos Greek Restaurant
Twist Martini Bar
Smash Ping Pong & Nite Club
Jozo's Original Après
The Collingwood Brewery
Crow Bar and Variety
Georgian Bowl
Trattoria Azzurra
Firehall Pizza Co.





magical evenings



REST. REJUVENATE. REVIVE. MOUNTAIN-STYLE.

A day spent in a world-class spa is the very definition of luxury. Rivaling any you might find in the city, Blue Mountain gives you a choice of spa experiences to delight your senses, soothe your soul and pamper your body.



Scandinave Spa

IWA SPA

**190 JOZO WEIDER BLVD., THE BLUE MOUNTAINS
(705) 293-2492**

Located right in Blue Mountain Village, iwa Spa offers gan-ban suites, private spa suites, beautifully appointed massage and reflexology rooms and much more.

SCANDINAVE SPA BLUE MOUNTAIN

**152 GREY COUNTY RD 21, THE BLUE MOUNTAINS
1 (877) 988-8484**

Situated on 25 acres of natural Ontario birch, Canadian maple and pine trees, Scandinave Spa lets you enjoy the ultimate in relaxation in the heart of nature.

KALOLA LIFE IN BALANCE SPA

**110 JOZO WEIDER BLVD., THE BLUE MOUNTAINS
1 (705) 443-5808**

Kalola incorporates nature and the four seasons into all aspects of your spa experience. Natural and organic textures blend with the views of the surrounding mountains to create a truly peaceful and tranquil atmosphere within.



LOCAL AMENITIES

RESTAURANTS

1. Lakeside Seafood and Grill 9 Harbour St E
2. Northwinds Brewhouse & Kitchen 499 First St
3. Oliver & Bonacini Café Grill 220 Gord Canning Dr
4. Copper Blues 156 Jozo Weider Blvd
5. The Mill Cafe 12 Bridge St
6. Bruce Wine Bar 8 Bruce St S
7. Fabbri 27 Bruce St S
8. The Dam Pub 53 Bruce St S
9. 1858 Caesar Bar 158 Hurontario St
10. Fish & Sips 206 Hurontario St
11. Prime Seven Nine 79 Hurontario St
12. Gibson and Company 93 Hurontario St Unit 3
13. Bent Taco 48 Pine St

SHOPPING

14. The Collingwood Centre 55 Mountain Rd
15. LCBO 1 First St
16. Sporting Life 222 Hurontario St
17. Sobeys 39 Huron St
18. Loblaws 12 Hurontario St
19. Shoppers Drug Mart 175 First St
20. Beer Store 415 First St
21. Metro 640 First St Ext
22. Dags & Willow 25 Second St
23. Canadian Tire 89 Balsam St
24. Home Depot 10 High St
25. Winners 55 Mountain Rd

ATTRACTIONS

26. Theatre Collingwood 115 Hurontario St #104
27. Galaxy Cinemas Collingwood 6 Mountain Rd
28. The Historic Gayety Theatre 161 Hurontario St
29. Brights Gallery 190 Jozo Weider Blvd
30. The Roost Wine Co 415763 10 Line

PARKS, TRAILS AND BEACHES

31. Craigeith Provincial Park 209403 ON-26
32. Northwinds Beach 209605 ON-26
33. Delphi Point Park 209233 ON-26
34. Sunset Point Beach St Lawrence St
35. Millenium Overlook Park 45 Heritage Dr
36. Whites Bay Park 2 Balsam St
37. Pretty River Valley Provincial Park County Road 31



LORE ATTARDO
VICE PRESIDENT, PRIMONT HOMES



JOE MONTESANO
PRESIDENT, PRIMONT HOMES



CHARLES ATTARDO
VICE PRESIDENT, PRIMONT HOMES

50 YEARS OF FINE HOME BUILDING.

The Montesanos originally made a name for themselves as builders of fine homes in the hills of Europe. Once they had settled in Canada more than 50 years ago, that tradition continued when Joe and Lore’s father, John, a bricklayer, founded Primont Homes.

Now when you’re purchasing a new home, you can benefit from all those years of experience. Primont Homes is committed to providing the highest quality and value to all homebuyers. Prime locations, elegant design, superb craftsmanship and unrivaled customer service have made Primont a leading and trusted name in the industry.



BLUMONT

Blumont is an exceptional opportunity to create a unique neighbourhood of homes that relate to the natural environment and outdoor lifestyle that is possible within all four seasons.

Drawing inspiration on resort towns from Aspen and Vale, to Whistler and Banff, the architecture exudes a luxury in a setting that is steps away from everything. Natural building materials of stone, wood, and glass highlight the exteriors of Blumont. An abundance of windows in each design helps connect the outdoors to the inside of the home.

Each home is designed for entertainment! Every floor plan is unique and features wide open spaces with modern kitchens that lead to vast lodge rooms with higher ceilings for group gatherings. Outdoor amenity space is fully customizable for year round use. All homes have sleeping bunkrooms for friends and family weekend getaways. Other unique floor plan features include second floor living space providing optimum views of the surrounding area, large custom mudroom rooms allowing for seasonal storage, and large private outdoor spaces.

BLUE MOUNTAINS

BLUE MOUNTAIN VILLAGE

BLUMONT

MONTERRA GOLF

GEORGIAN BAY

SITE PLAN



BLUMONT

FLOORPLANS

ALPINE - 60 -1

1,888 SQ.FT. 3-5 BEDROOM

The open concept design of this three-bedroom home, with its soaring high ceilings, creates synergy and flow as well as a sense of togetherness. The generously sized mudroom and storage areas are a perfect fit for your active lifestyle.



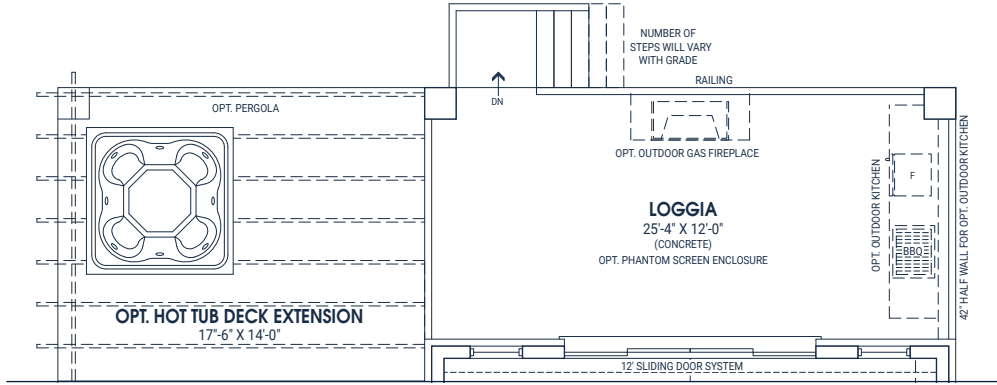
ELEVATION B



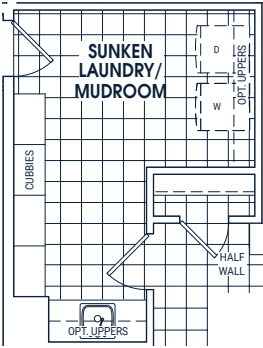
ELEVATION C



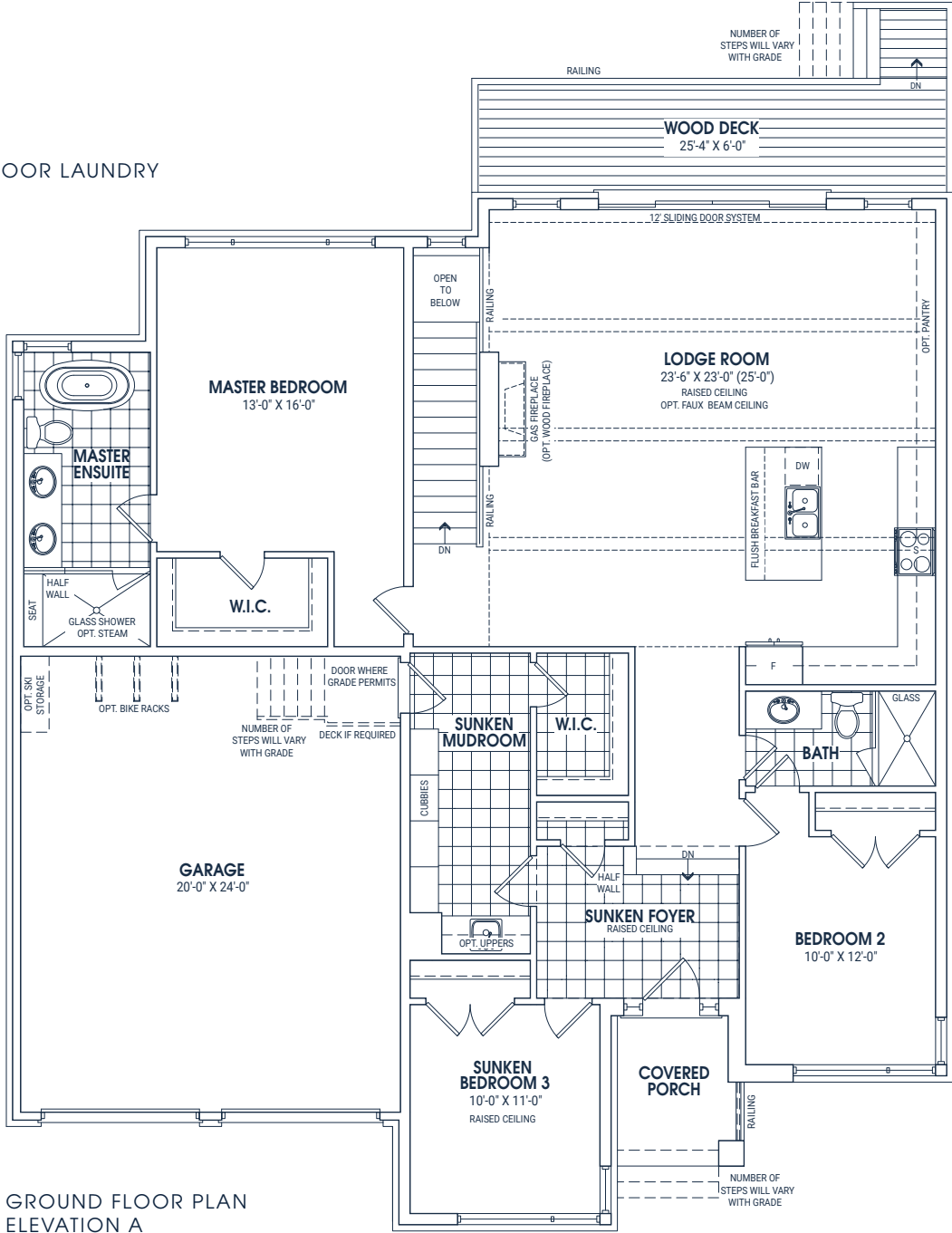
ELEVATION A



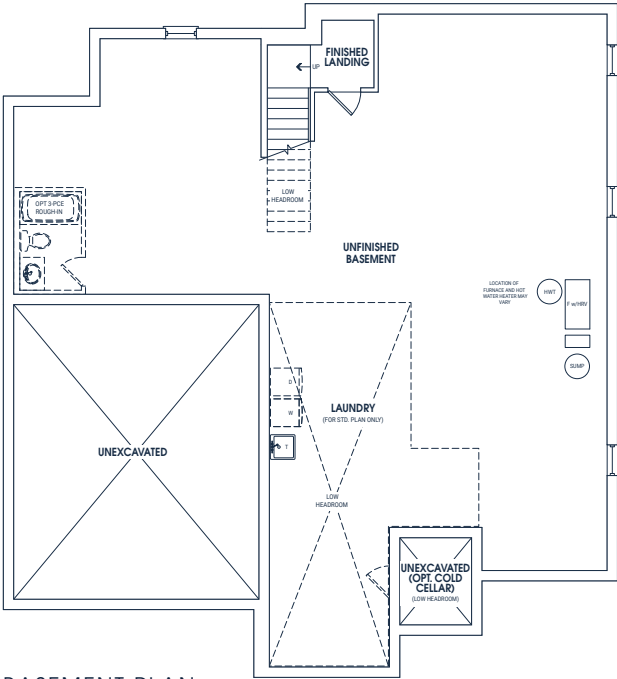
OPTIONAL DECK EXTENTION & LOGGIA



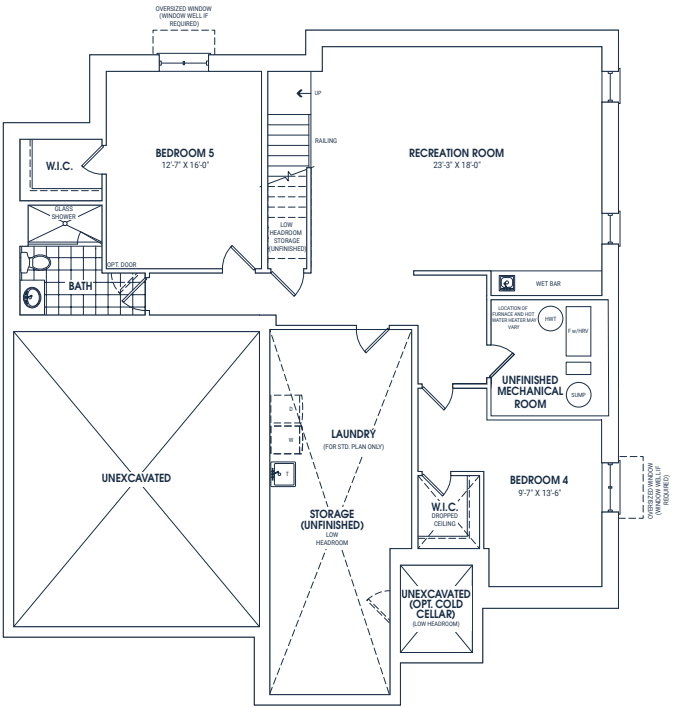
OPTIONAL GROUND FLOOR LAUNDRY



GROUND FLOOR PLAN ELEVATION A



BASEMENT PLAN ELEVATION A



OPTIONAL BASEMENT PLAN ELEVATION A

APRÈS - 60 - 2

2,926 SQ.FT. 4-6 BEDROOM

This three-bedroom bungalow loft, with a main floor master bedroom, features an impressive extra high main floor ceiling. The loft bedrooms are situated just above the generous lodge room, where everyone can gather.



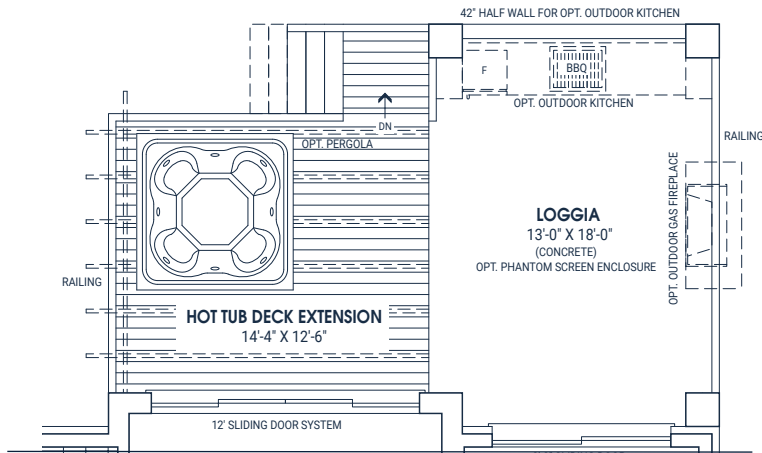
ELEVATION A



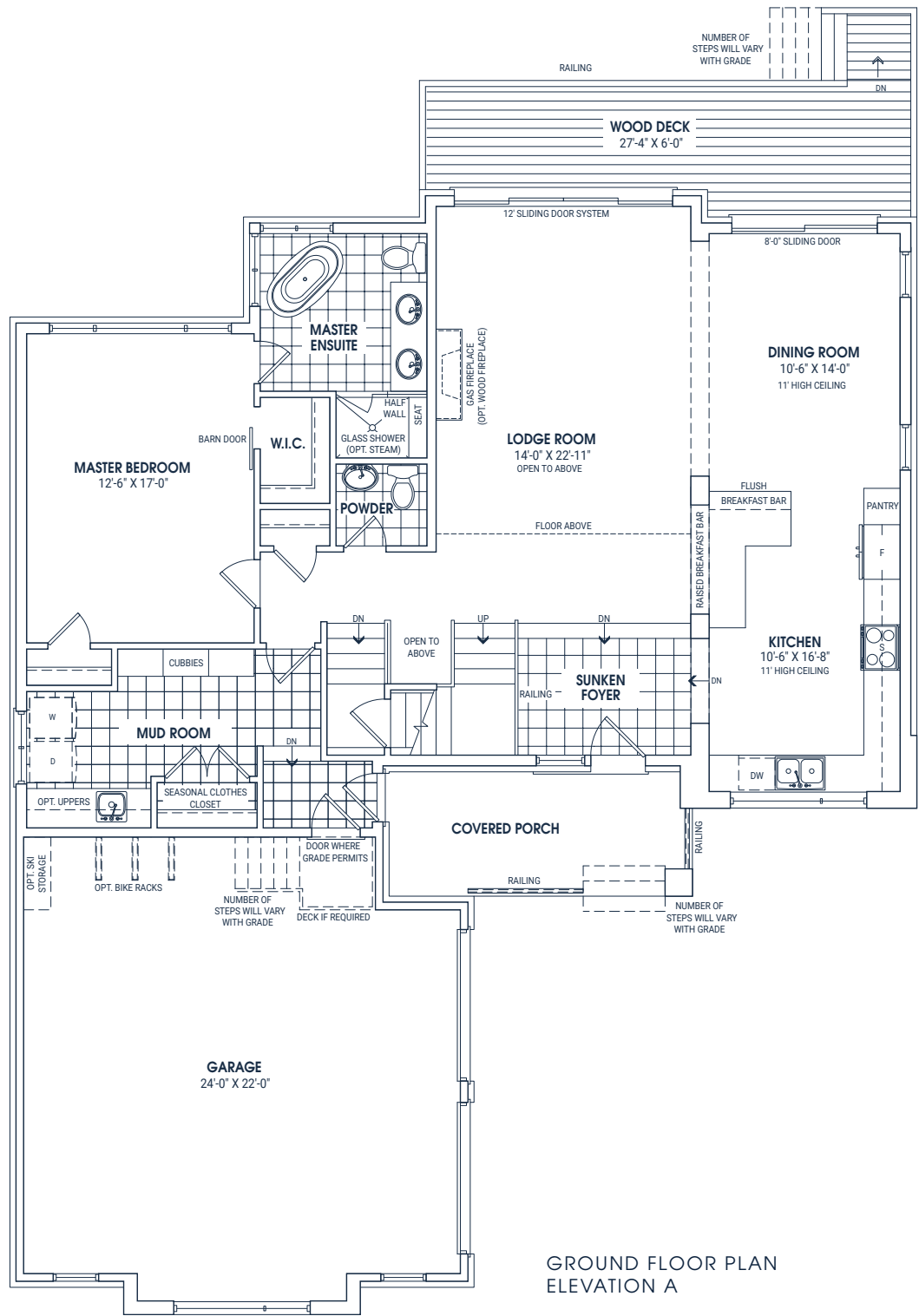
ELEVATION B



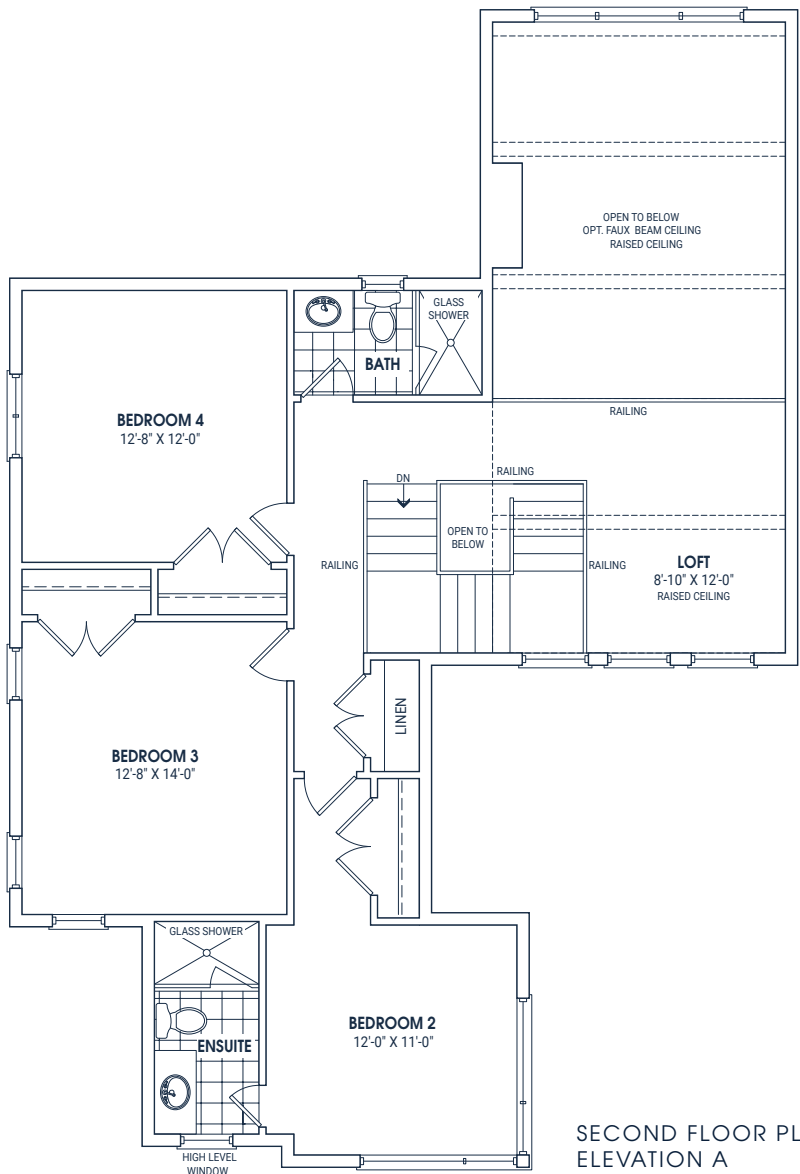
ELEVATION C



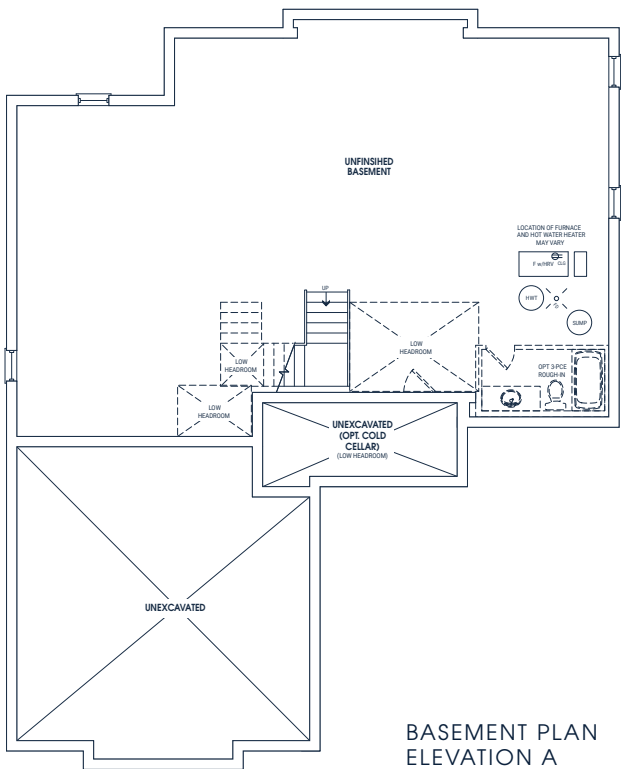
OPTIONAL DECK EXTENTION & LOGGIA



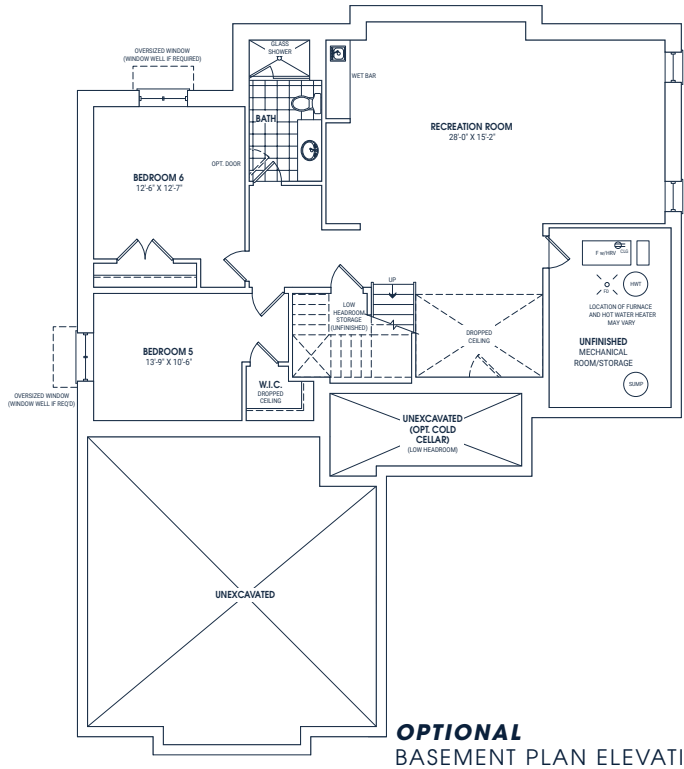
GROUND FLOOR PLAN
ELEVATION A



SECOND FLOOR PLAN
ELEVATION A



BASEMENT PLAN
ELEVATION A



OPTIONAL
BASEMENT PLAN ELEVATION A

NORDIC - 60 - 3

3,158 SQ.FT. 4-6 BEDROOM

A stunning bungalow loft with a main floor master bedroom and open concept living room at rear of the home, which leads to an optional loggia. The three loft bedrooms feature a bridge upper hall overlooking both sides of the home.



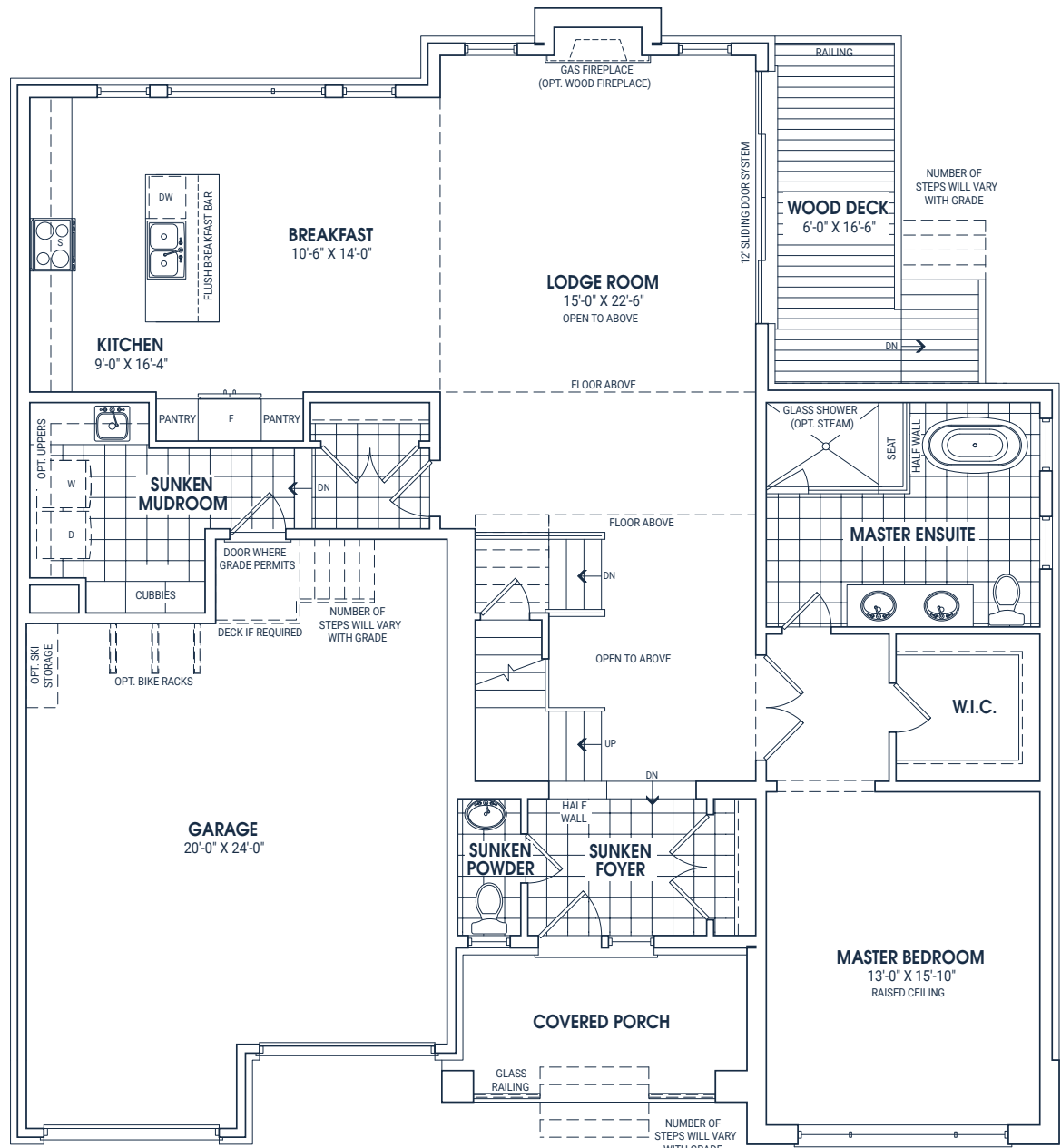
ELEVATION A



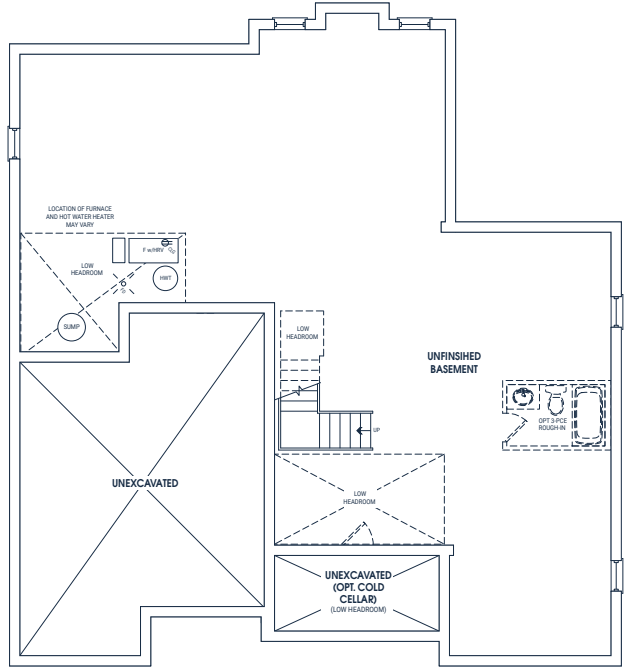
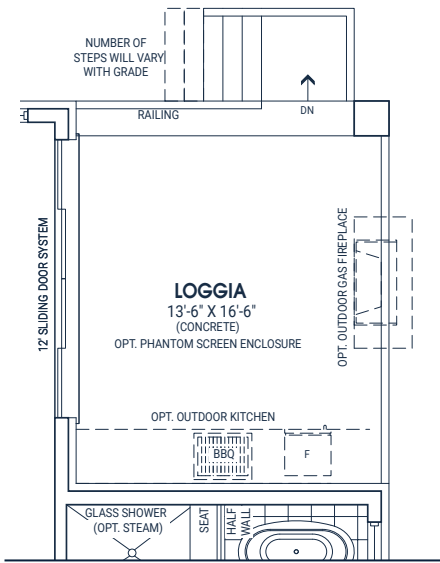
ELEVATION C



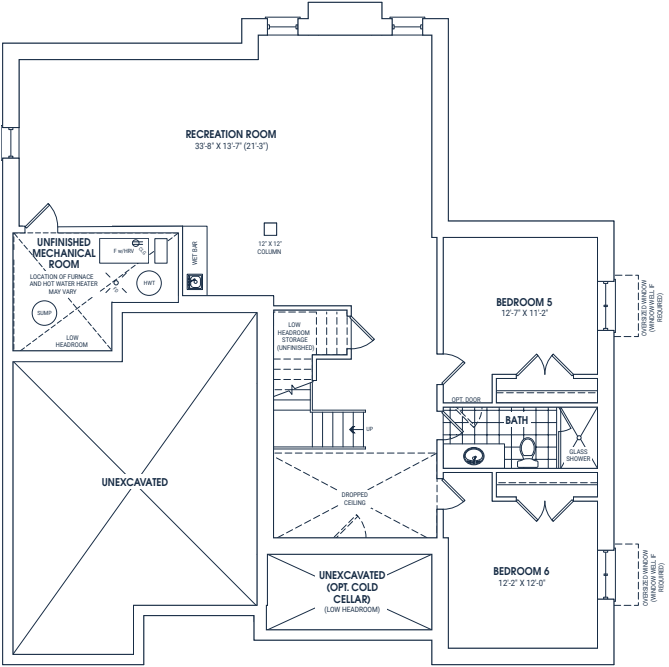
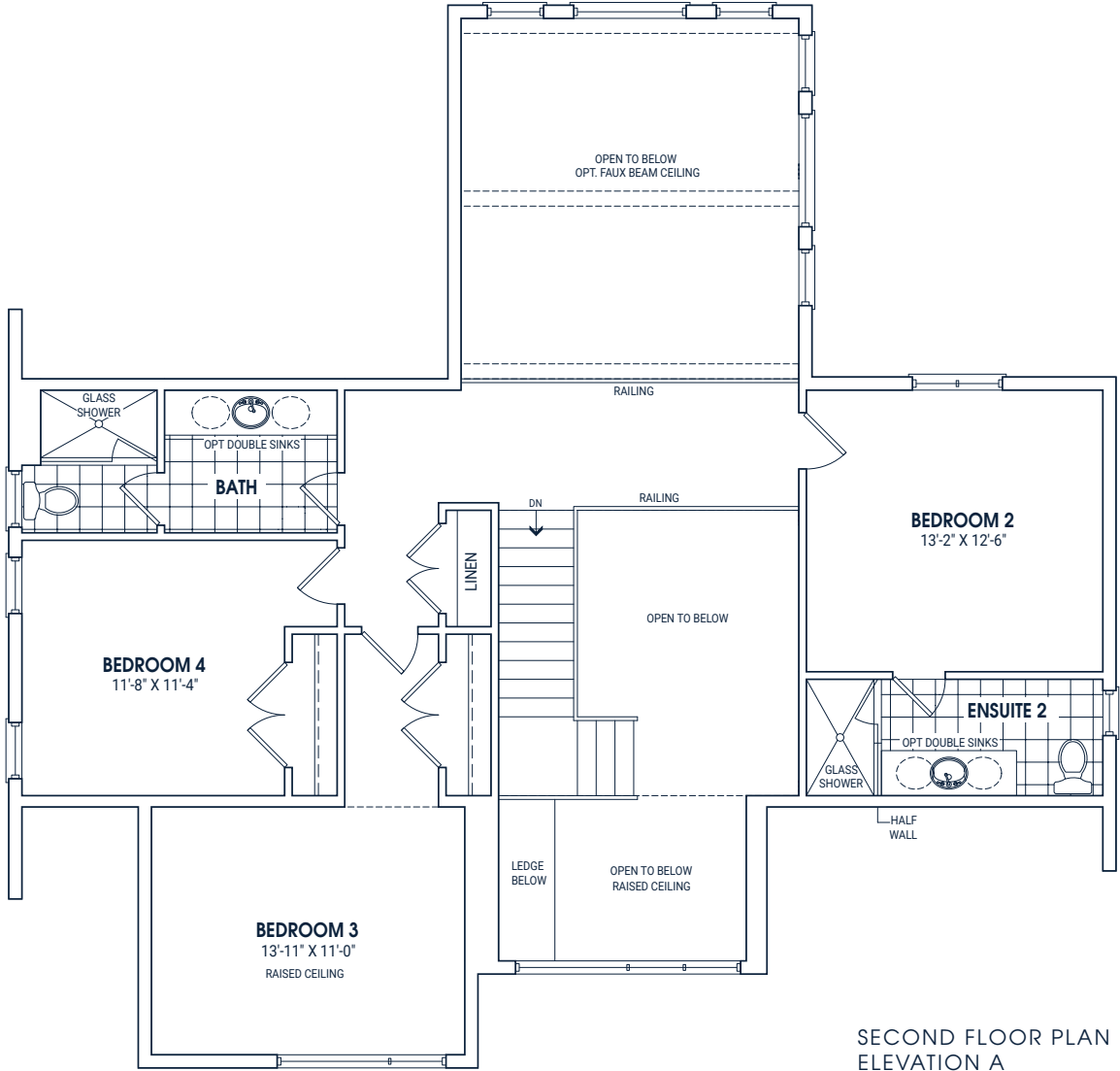
ELEVATION B



OPTIONAL LOGGIA



BASEMENT PLAN ELEVATION A



OPTIONAL FINISHED BASEMENT PLAN ELEVATION A

BACKCOUNTRY - 60 - 4

2,410 SQ.FT. 3-5 BEDROOM

A truly impressive two storey home. The front facing lodge room with stacked windows and a central fireplace create an atmosphere that is both filled with light yet snug. Travel upstairs and you'll find three generous bedrooms and two bathrooms.



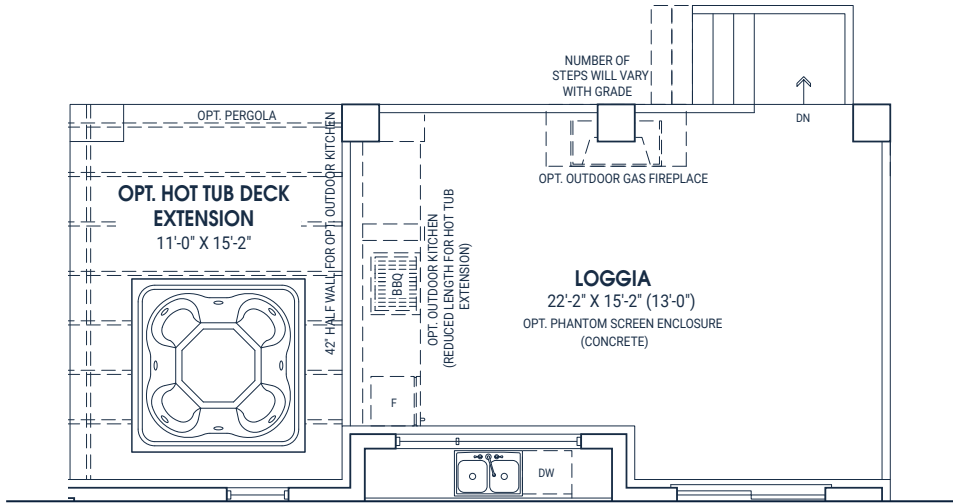
ELEVATION A



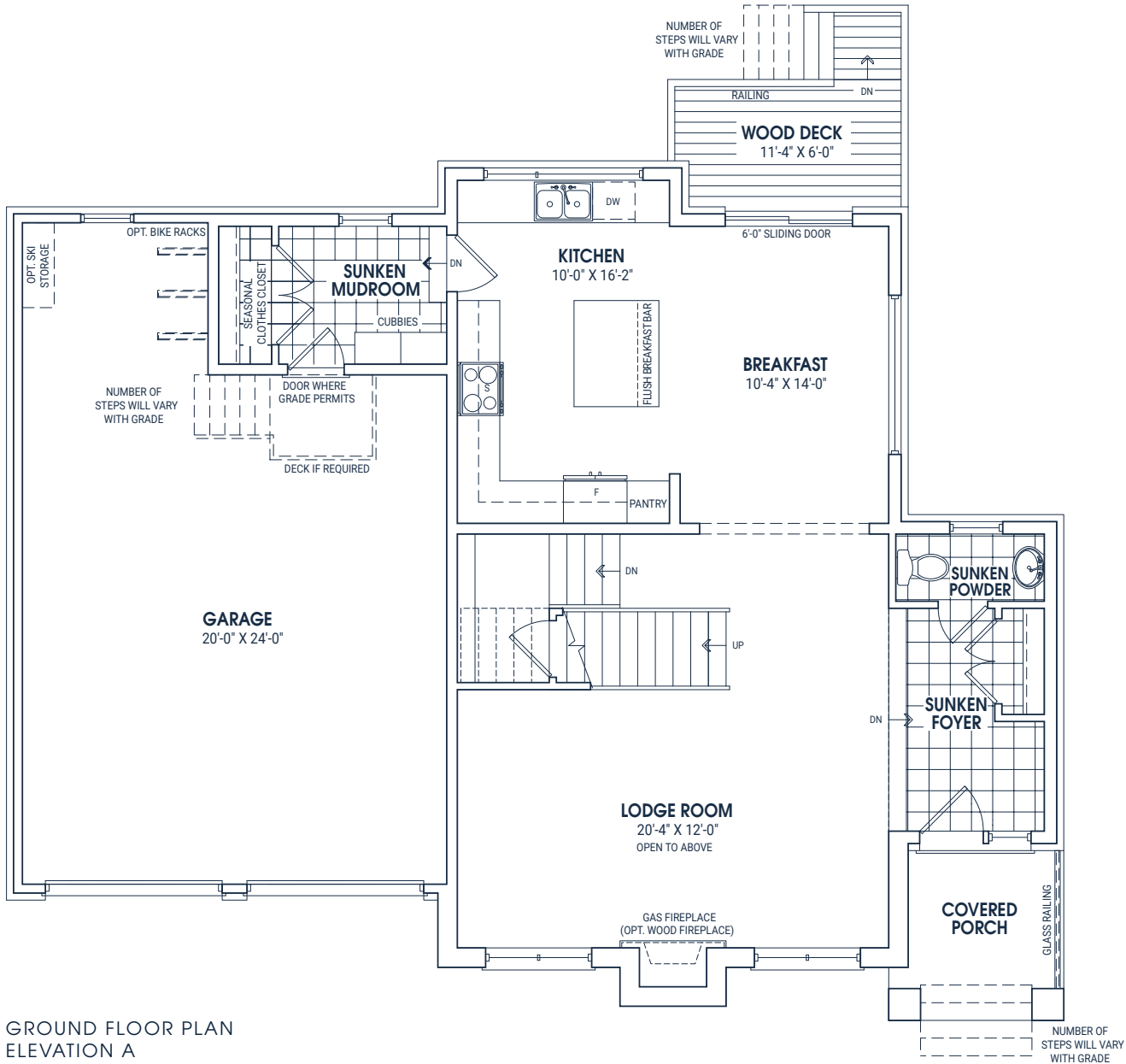
ELEVATION B



ELEVATION C

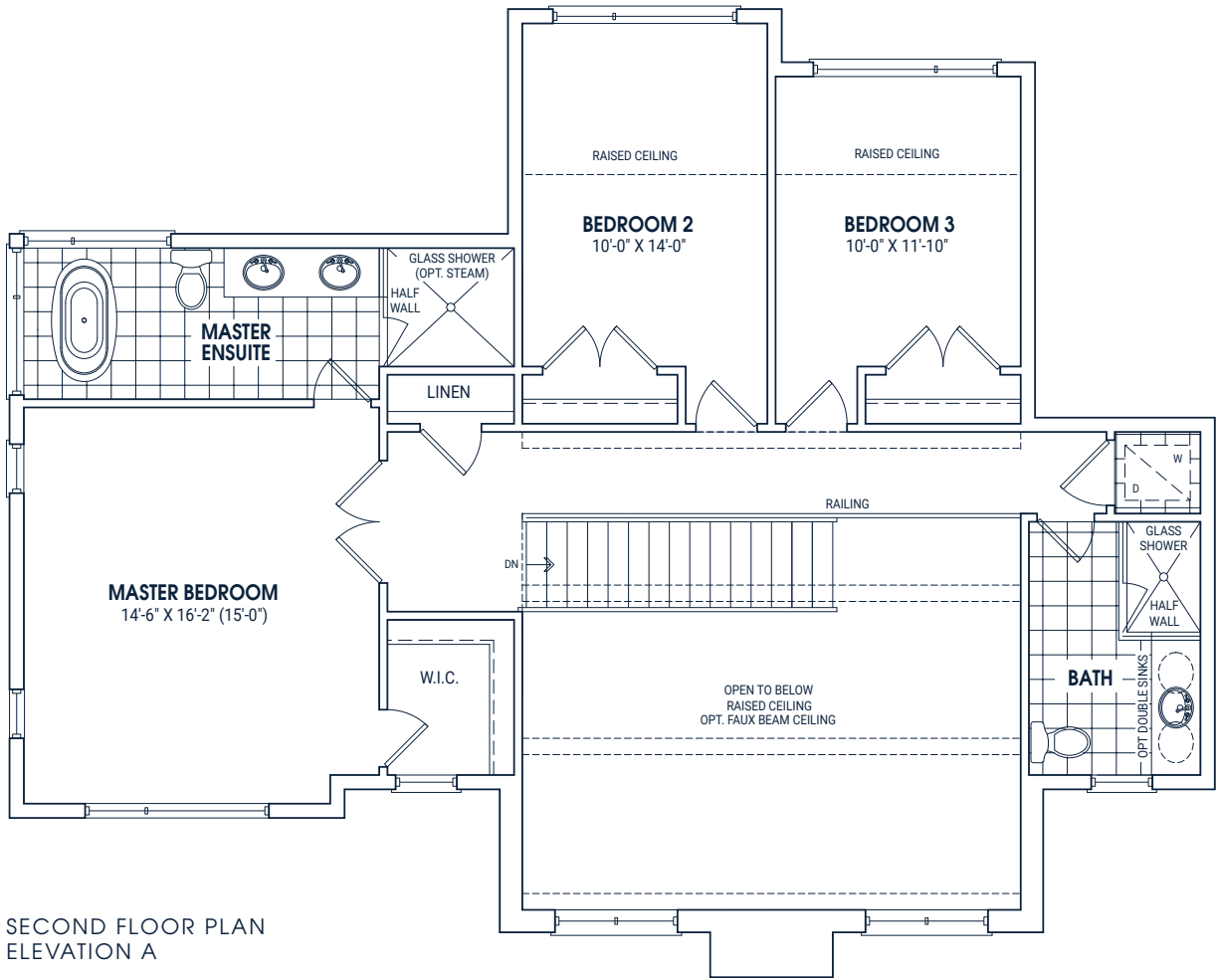


OPTIONAL DECK EXTENTION & LOGGIA

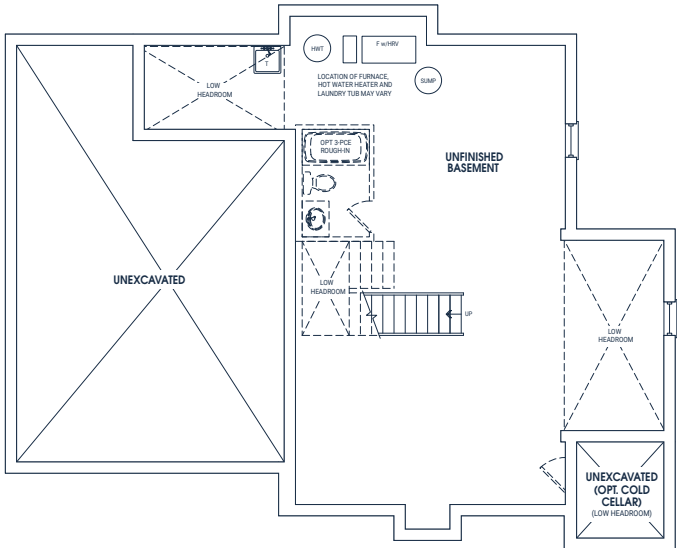


GROUND FLOOR PLAN
ELEVATION A

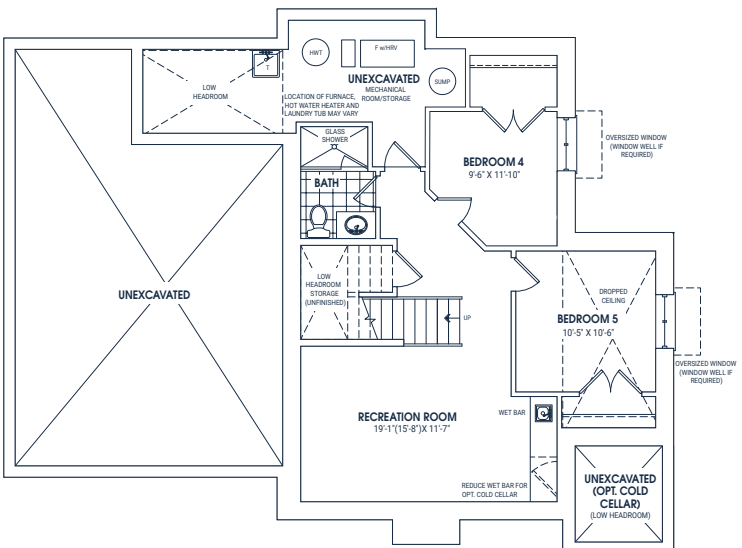
BACKCOUNTRY - 60 - 4



SECOND FLOOR PLAN
ELEVATION A



BASEMENT PLAN
ELEVATION A



OPTIONAL
BASEMENT PLAN ELEVATION A

Plan is not to scale and all illustrations are artist concept only. Dimensions, specifications, layout and materials are approximate only and are subject to change without notice. The patterns may vary. Window size and location may vary. Actual usable floor space may vary from stated floor area. Builders required for mechanical purposes such as kitchen and bathroom exhausts and heating and cooling ducts have not been indicated. Electrical, plumbing and stairs shown are designed for illustration purposes only and are not included in the price. Stairs are shown unfinished. © 2022.

QUAD - 60 - 5

2,649 SQ.FT. 4-6 BEDROOM

The open concept layout of this two storey home comes with a unique optional breakfast nook with booth bench seating. The open staircase, connecting to the lodge room, will guide you upstairs where you will find four bedrooms and two bathrooms.



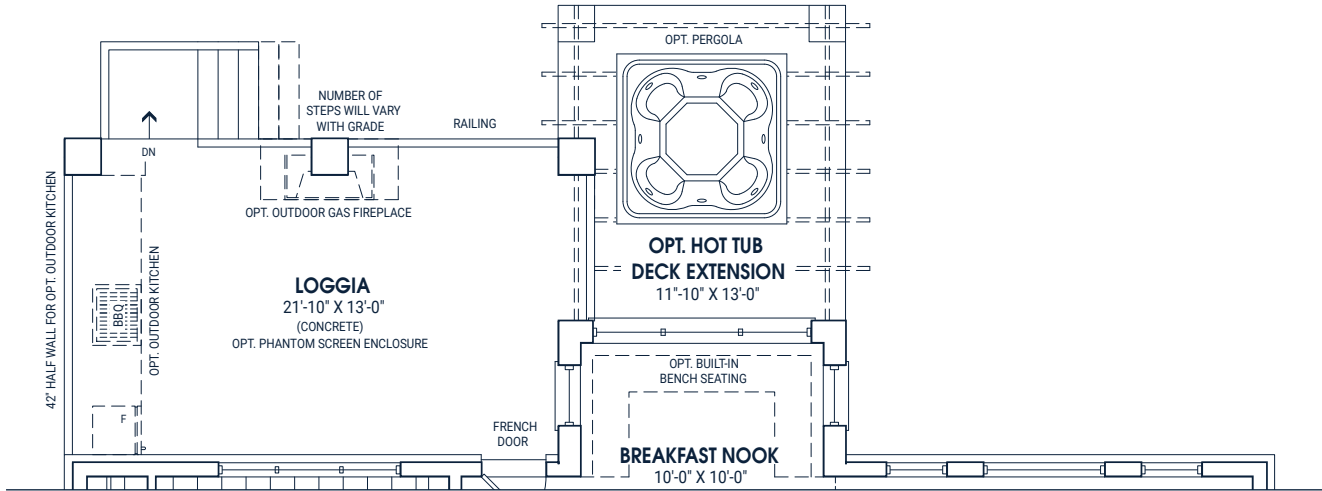
ELEVATION A



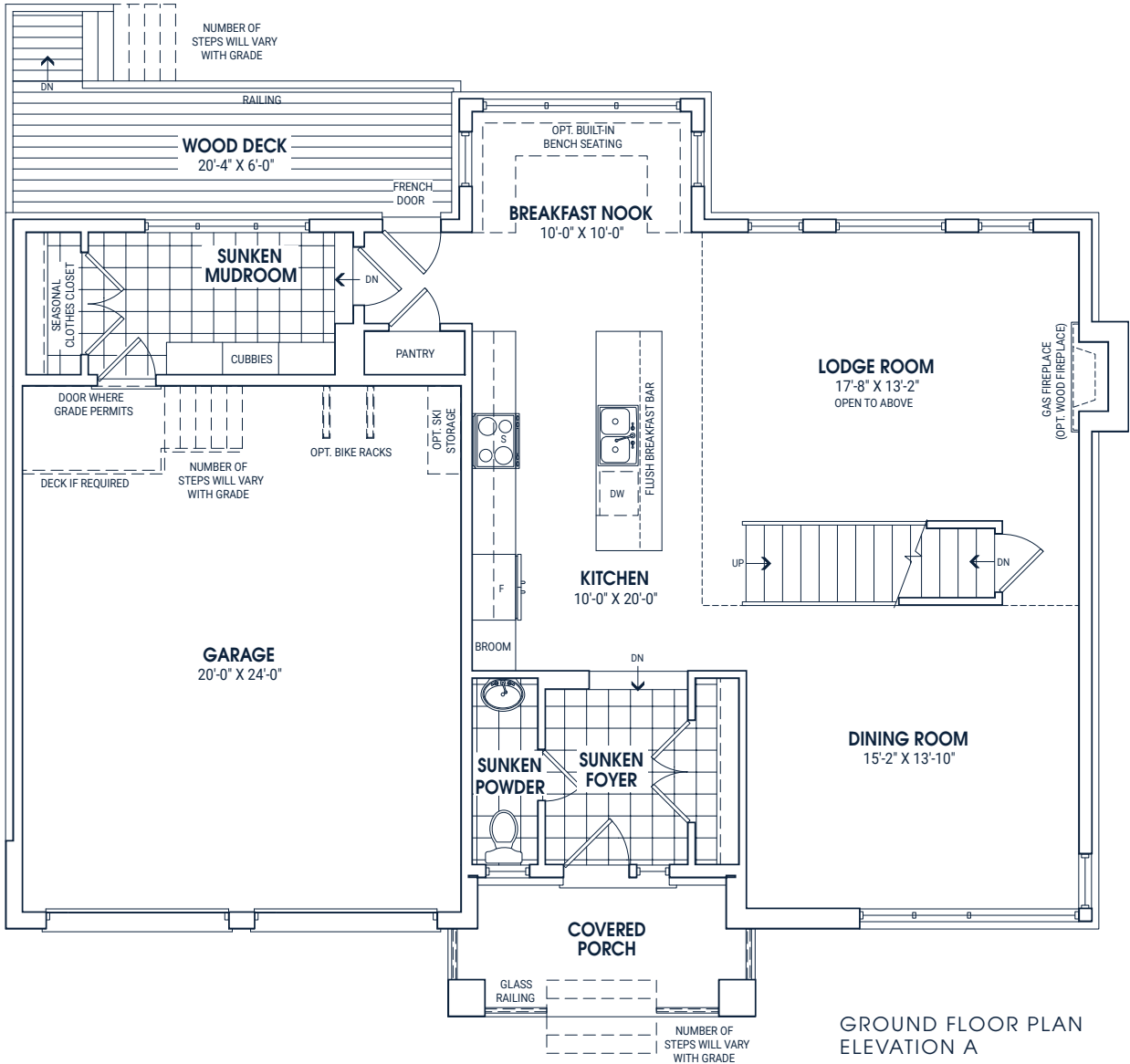
ELEVATION B



ELEVATION C

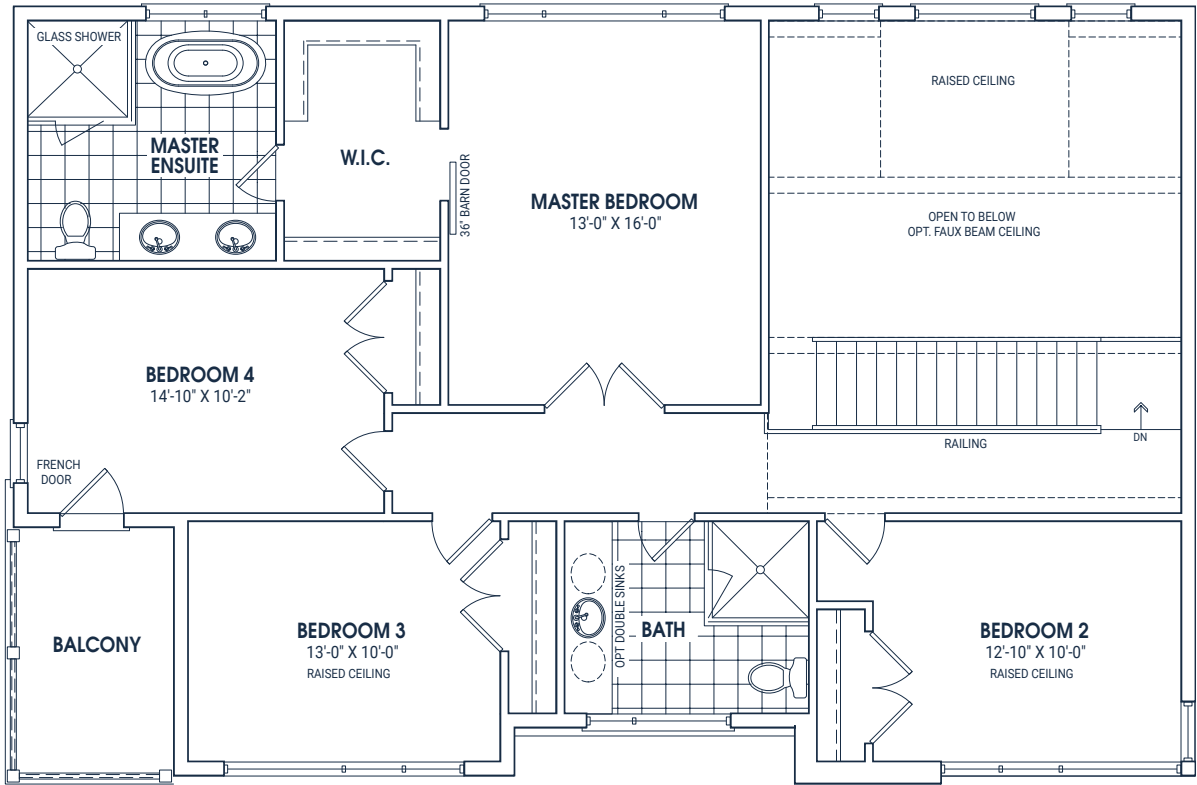


OPTIONAL DECK EXTENTION & LOGGIA

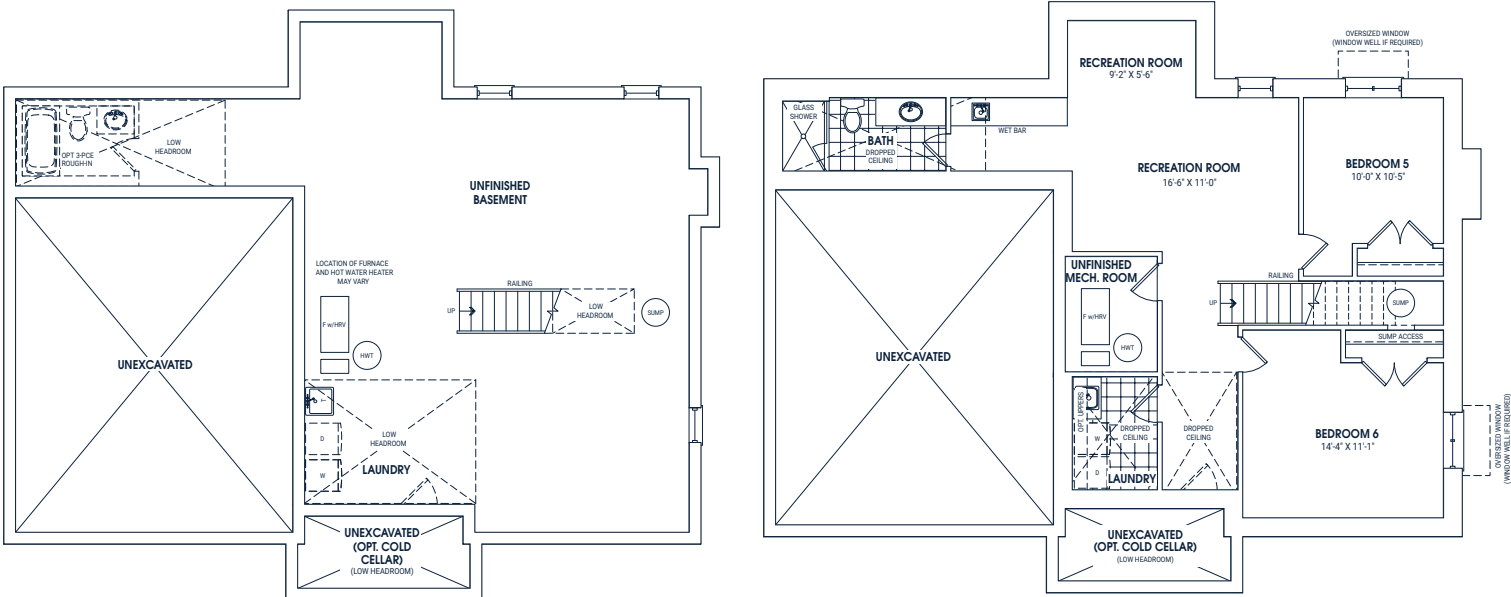


GROUND FLOOR PLAN ELEVATION A

QUAD - 60 - 5



SECOND FLOOR PLAN ELEVATION A



OPTIONAL BASEMENT PLAN ELEVATION A

Plan is not to scale and all illustrations are artist concept only. Dimensions, specifications, layout and materials are approximate only and are subject to change without notice. The patterns may vary. Window size and location may vary. Actual usable floor space may vary from stated floor area. Builders required for mechanical purposes such as kitchen and bathroom exhausts and heating and cooling ducts have not been indicated. Delivery, loadings and sizes vary per floor. Furniture and stairs shown are displayed for illustration purposes only and are not included in the sale price. Stairs are sold unfinished. © 2022.

CHUTES - 60 - 6

2,926 SQ.FT. 4-6 BEDROOM

Striking vaulted ceilings stretch from the front foyer to the rear lodge room and set the tone for this lovely two storey home. The charming galley kitchen opens onto the dining room and the main floor laundry room has plenty of storage space.



ELEVATION B



ELEVATION C



ELEVATION A



CROSS-COUNTRY - 60 - 7

2,869 SQ.FT. 4-6 BEDROOM

This completely unique upside down layout has the living space on the second floor while everyone sleeps on the first. The open concept nature of the second floor, with its detailed high ceilings and plenty of windows, provides impressive viewing possibilities. The second floor is also home to the master bedroom and an optional private games room.



ELEVATION B



ELEVATION C



ELEVATION A



SLALOM - 60 - 8

3,528 SQ.FT. 4-6 BEDROOM

The open concept layout features an inspiring front stair tower that opens on to the two storey dining room with wine bar. A two storey double-sided fireplace divides the space between the dining room and lodge room. The second storey houses four bedrooms and three bathrooms including luxurious master ensuite.



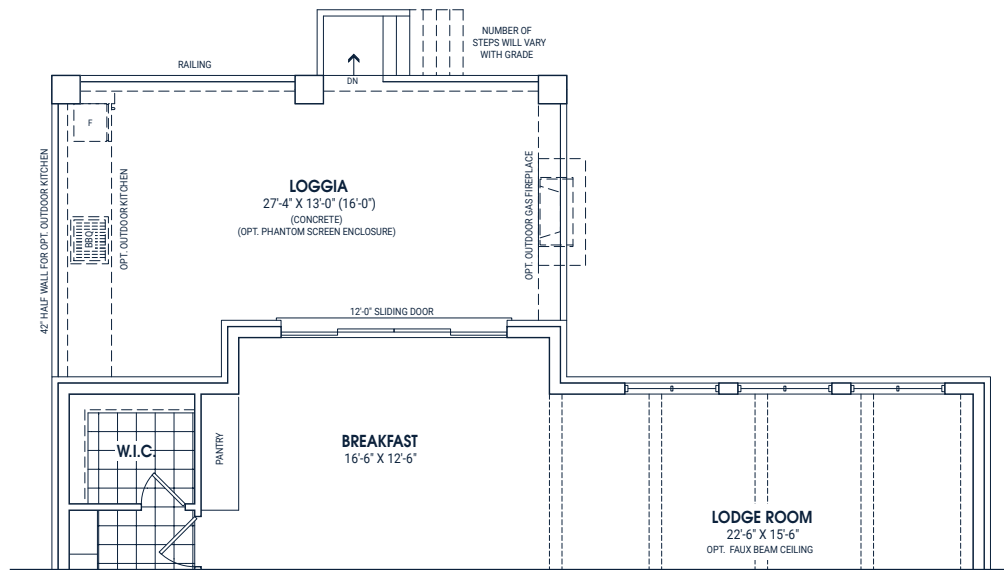
ELEVATION A



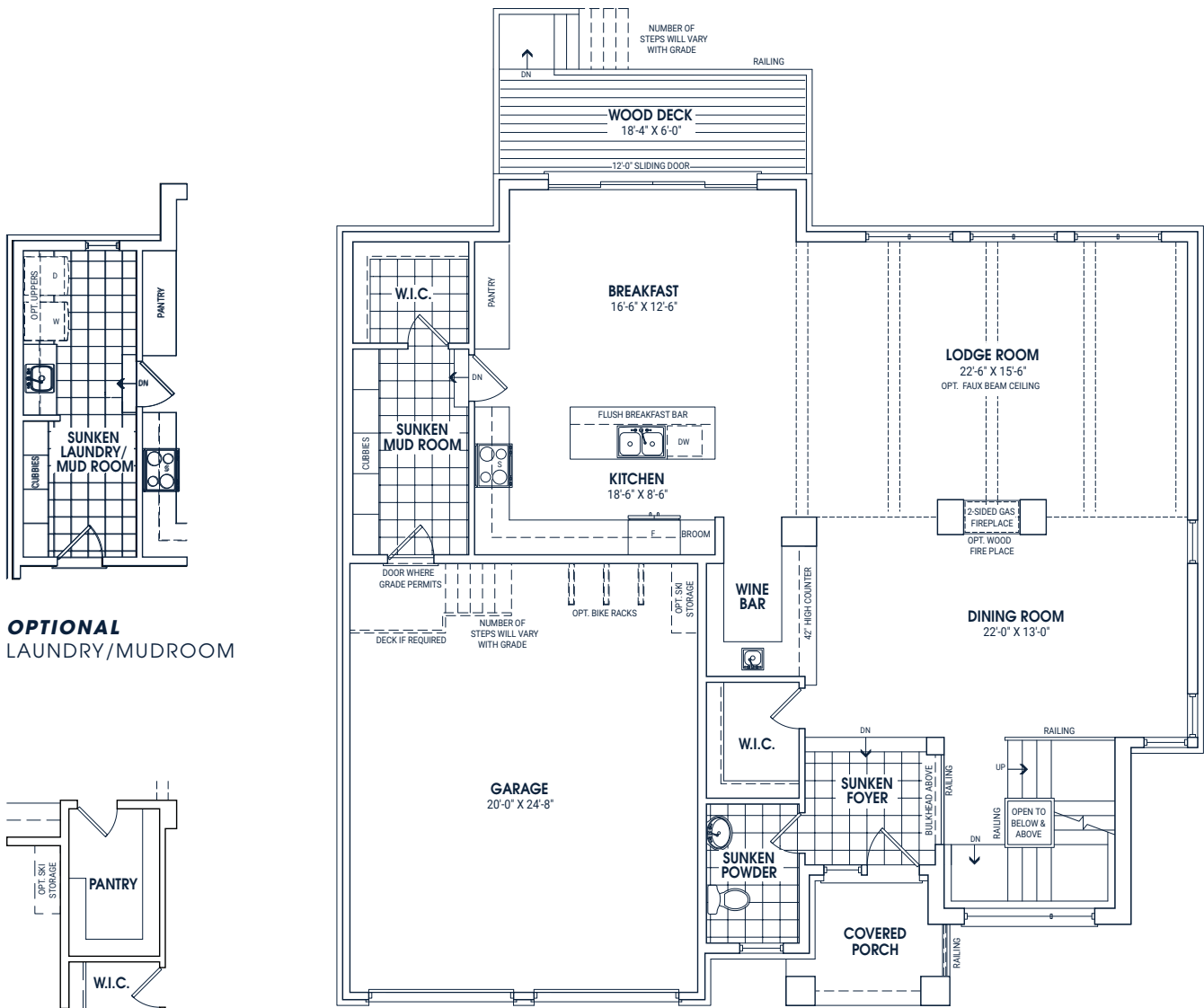
ELEVATION B



ELEVATION C



OPTIONAL LOGGIA

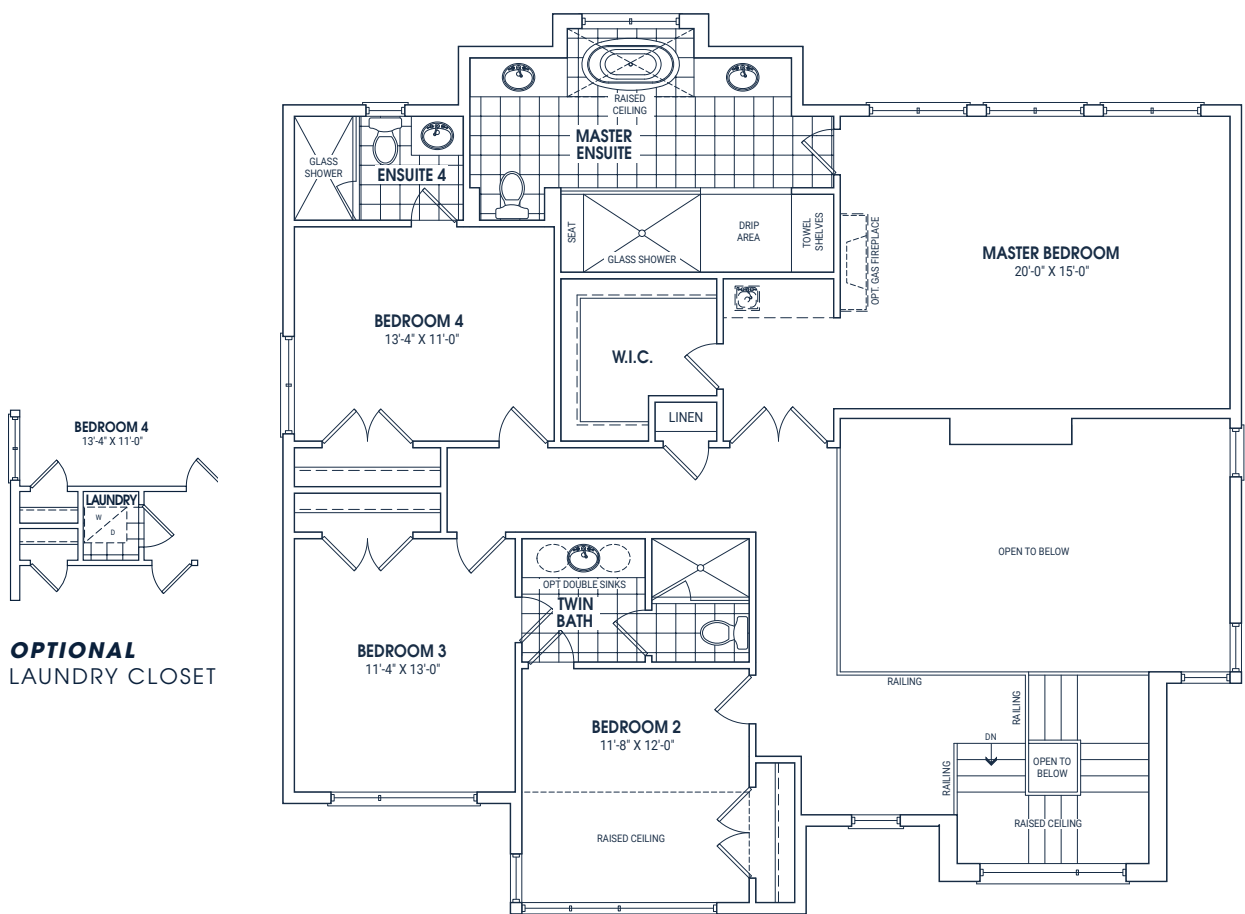


GROUND FLOOR PLAN ELEVATION A

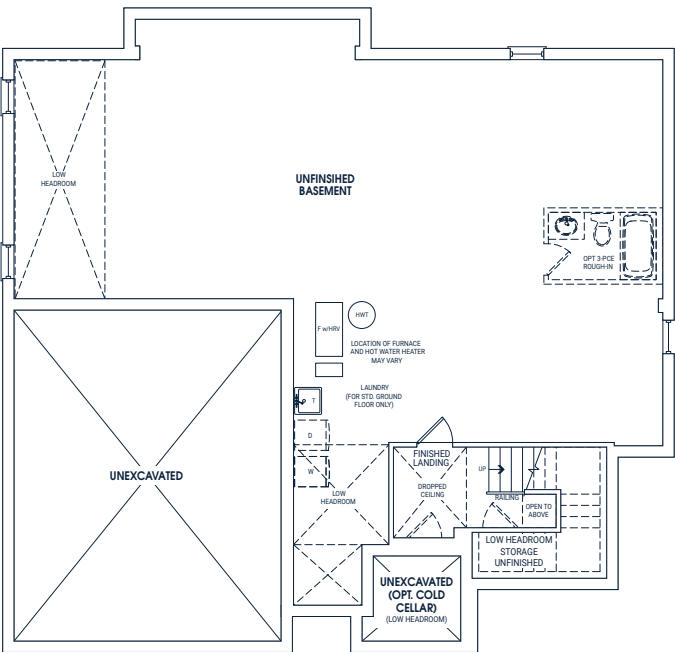
OPTIONAL LAUNDRY/MUDROOM

OPTIONAL PANTRY

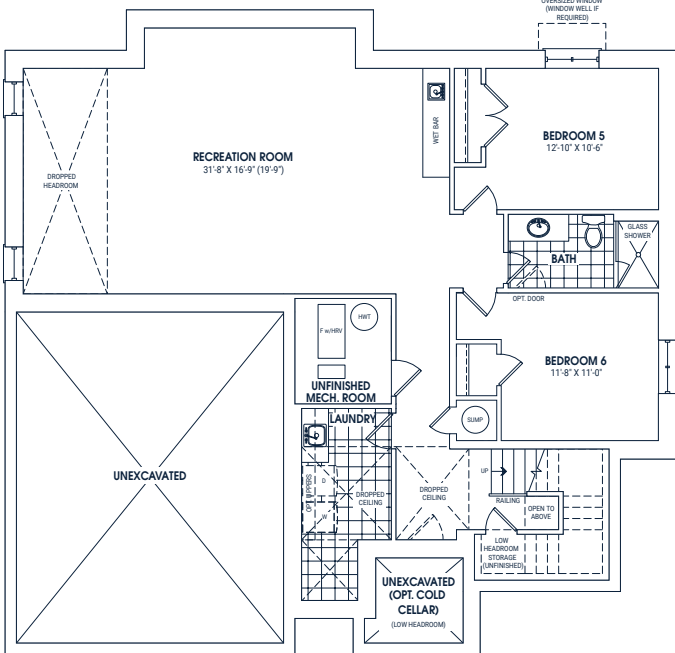
SLALOM - 60 - 8



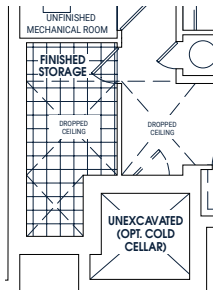
SECOND FLOOR PLAN ELEVATION A



BASEMENT PLAN ELEVATION A



OPTIONAL BASEMENT PLAN ELEVATION A



OPTIONAL FINISHED STORAGE ROOM

DOWNHILL - 60 - 9

3,464 SQ.FT. 4-6 BEDROOM

The side facing garage with second floor living space is an original twist on an old classic. Continuing this trend, the three bedrooms are located on the main floor and are adjacent to the rec room with its impressive bar. Upstairs you will find a stately master bedroom with private balcony, along with the games room, lodge room and a cozy den.



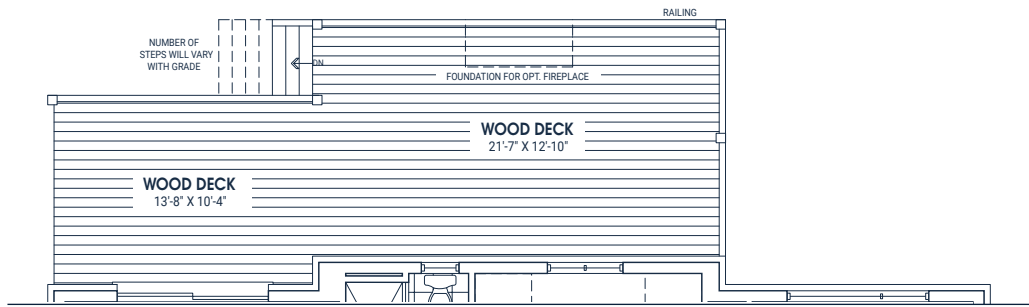
ELEVATION A



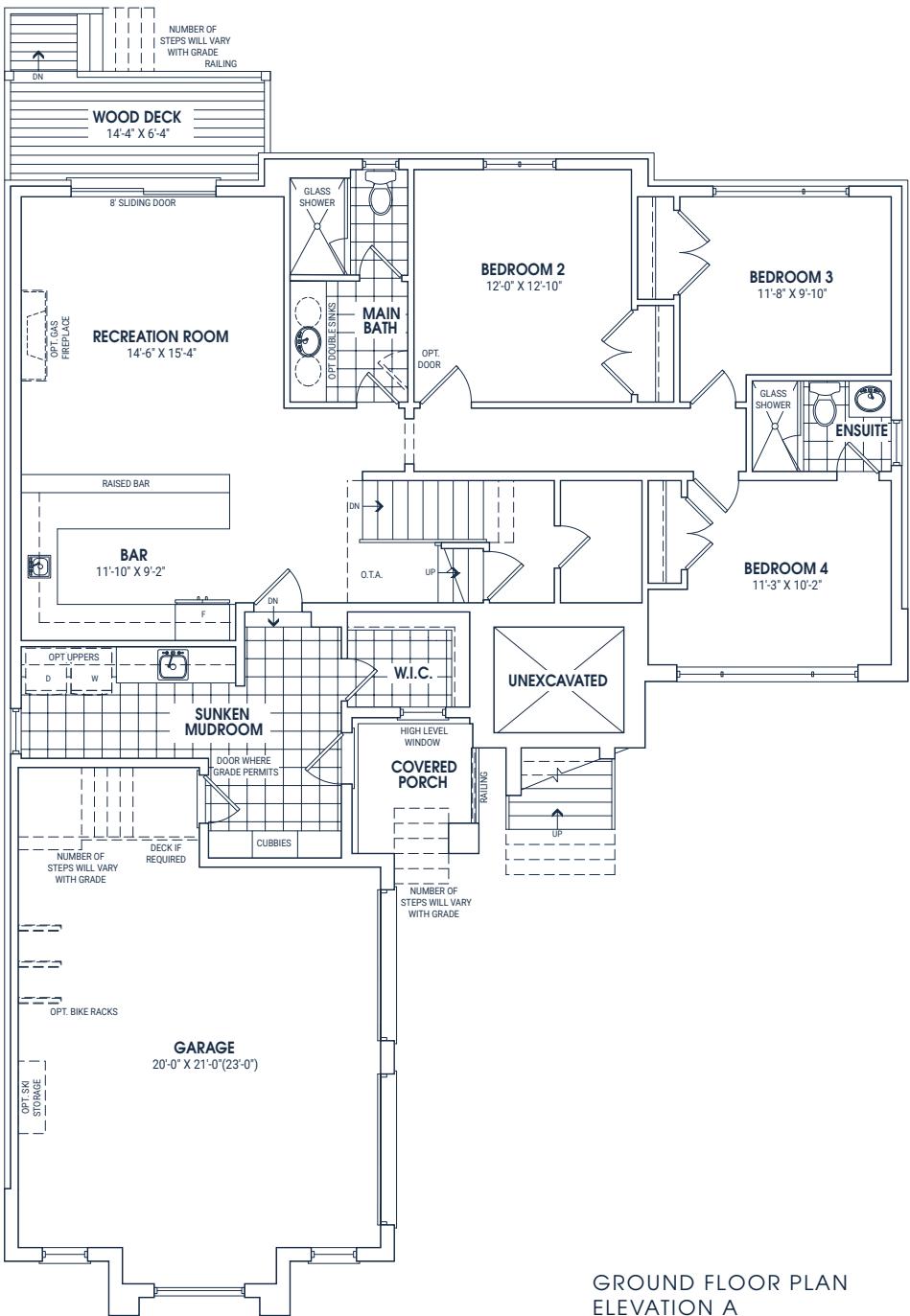
ELEVATION C



ELEVATION B



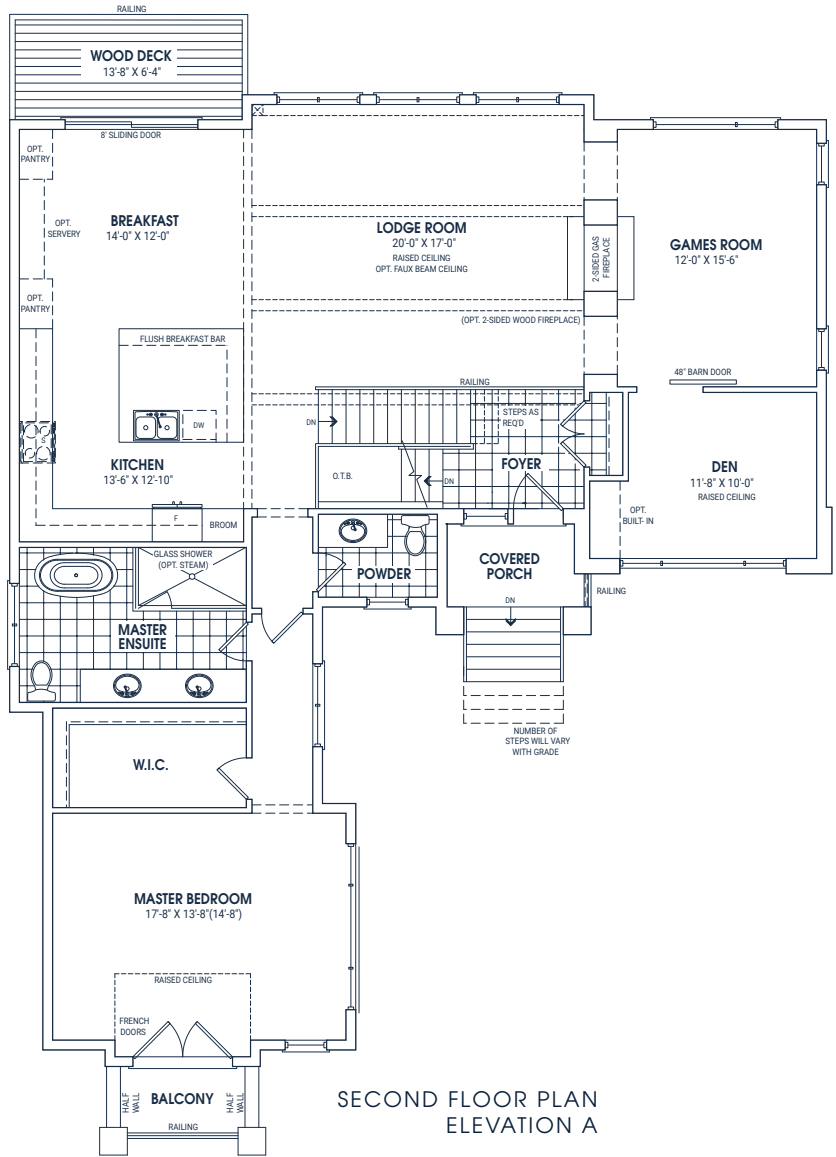
OPTIONAL UPGRADED DECK



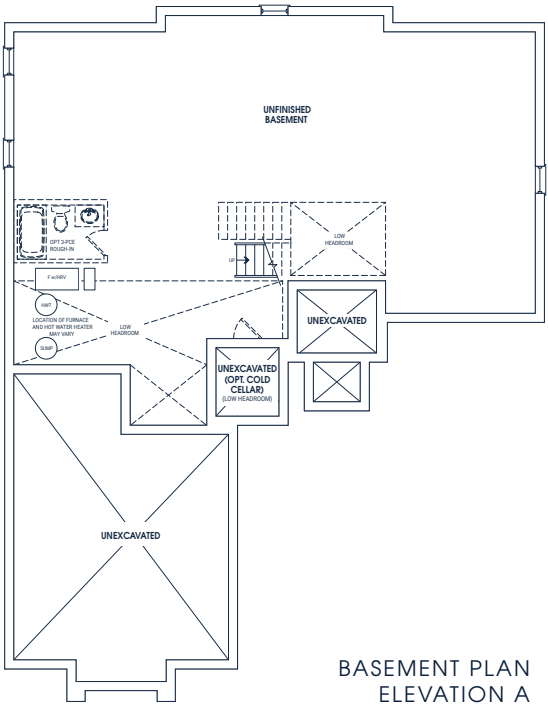
GROUND FLOOR PLAN ELEVATION A



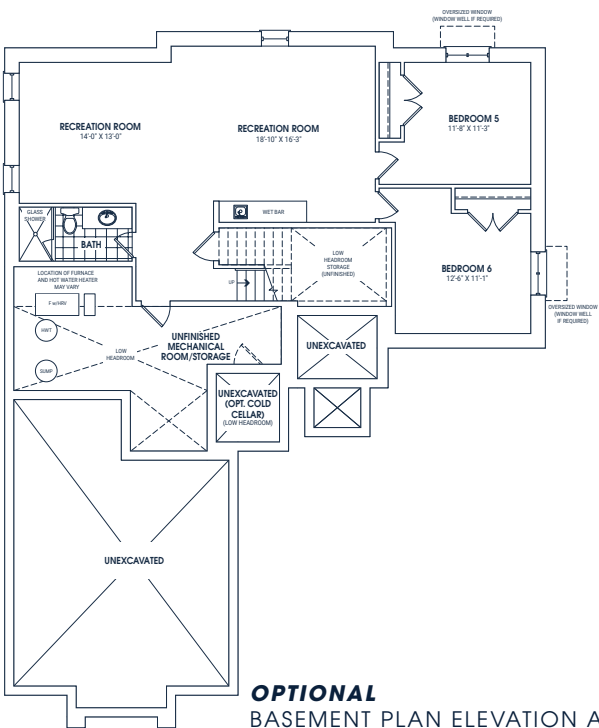
OPTIONAL SECOND FLOOR UPGRADED DECK AND DECK EXTENTION



SECOND FLOOR PLAN ELEVATION A



BASEMENT PLAN ELEVATION A



OPTIONAL BASEMENT PLAN ELEVATION A

FREESTYLE - 60 - 10

3,981 SQ.FT. 4-6 BEDROOM

This luxurious corner model features an open concept main floor which connects a large kitchen, breakfast nook and regal lodge room, creating a warm and inviting atmosphere. Adding to this idea is the private sunken wine cellar and 1 ½ storey upstairs games loft with corner windows showcasing beautiful views.



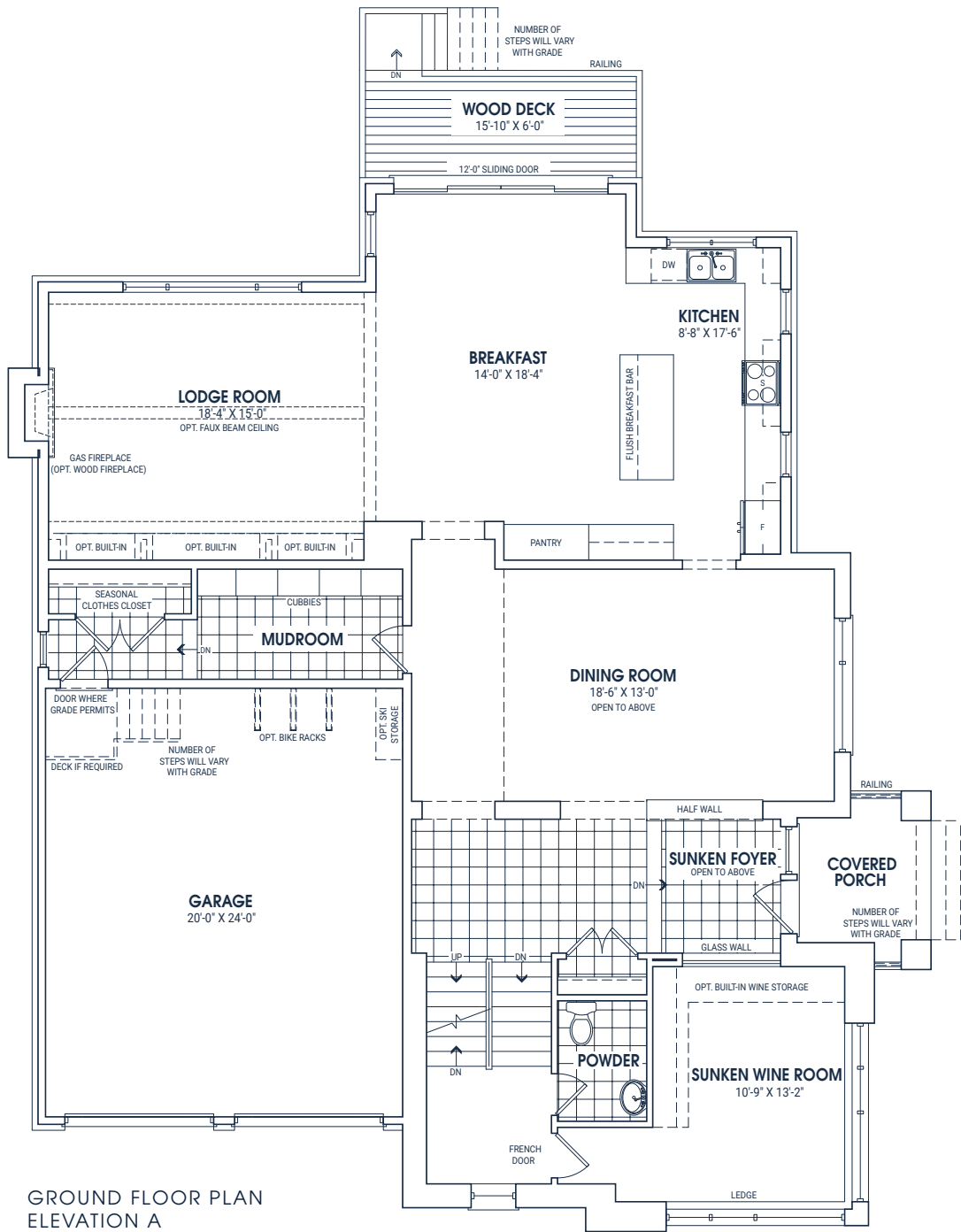
ELEVATION A



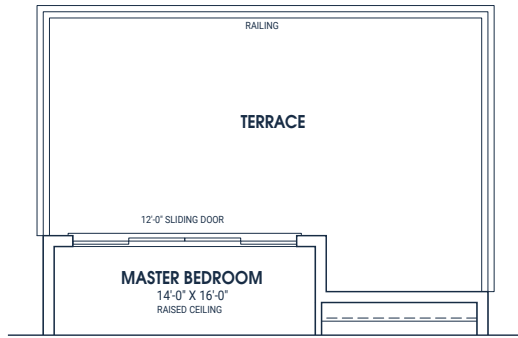
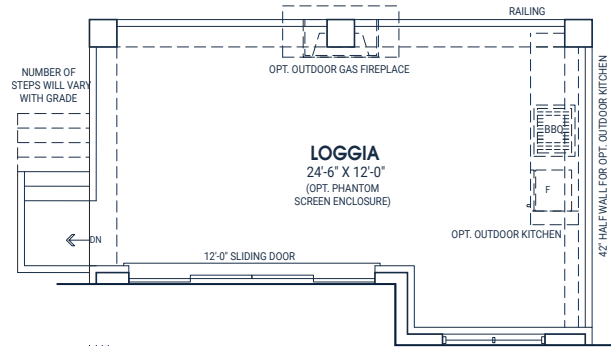
ELEVATION C



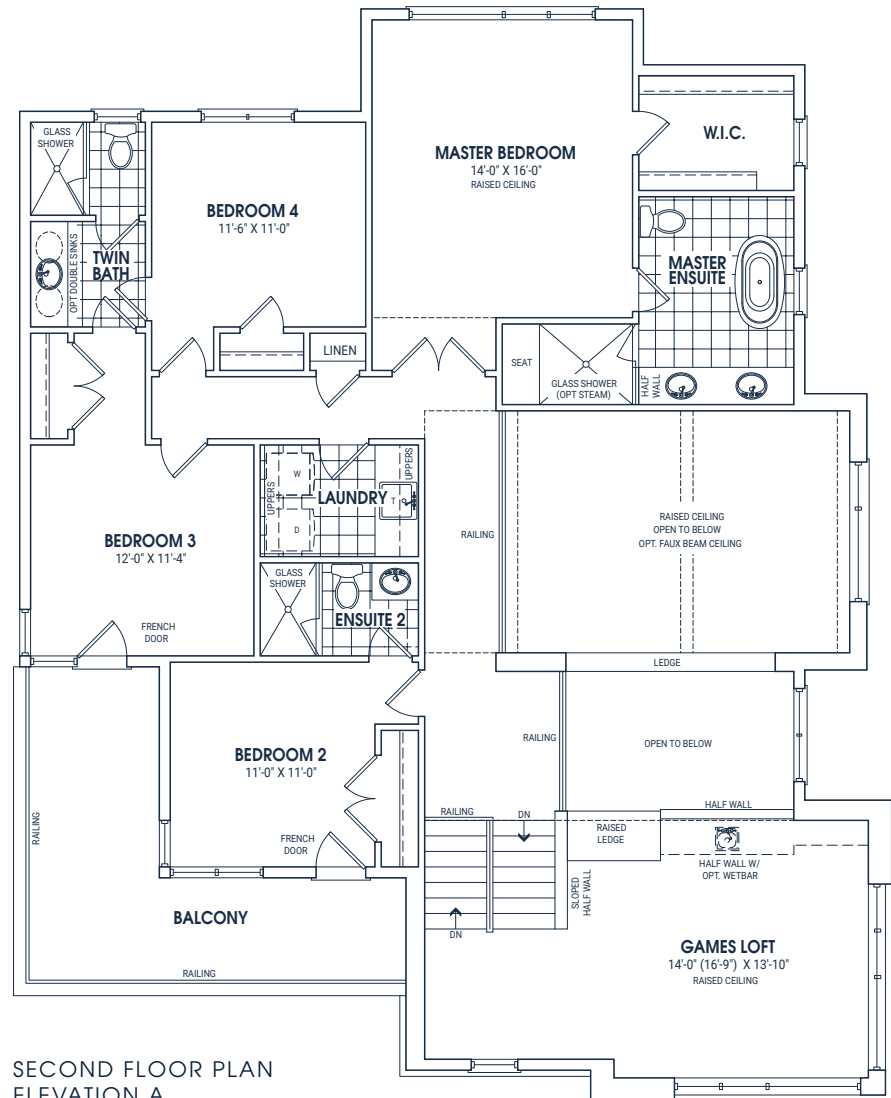
ELEVATION B



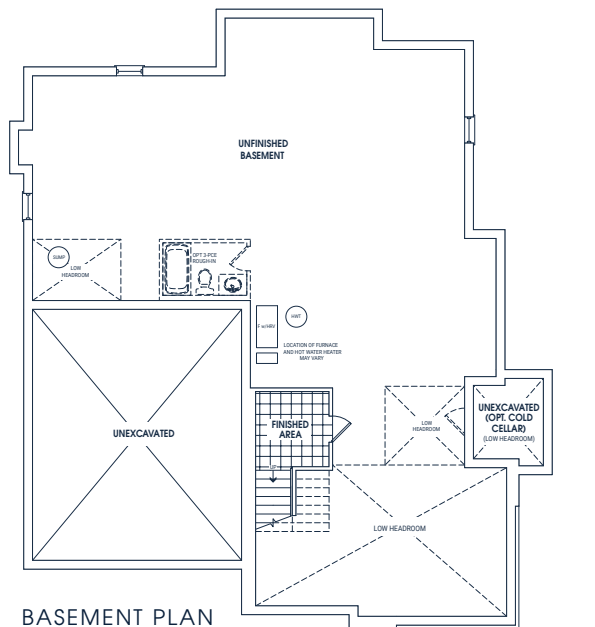
OPTIONAL LOGGIA



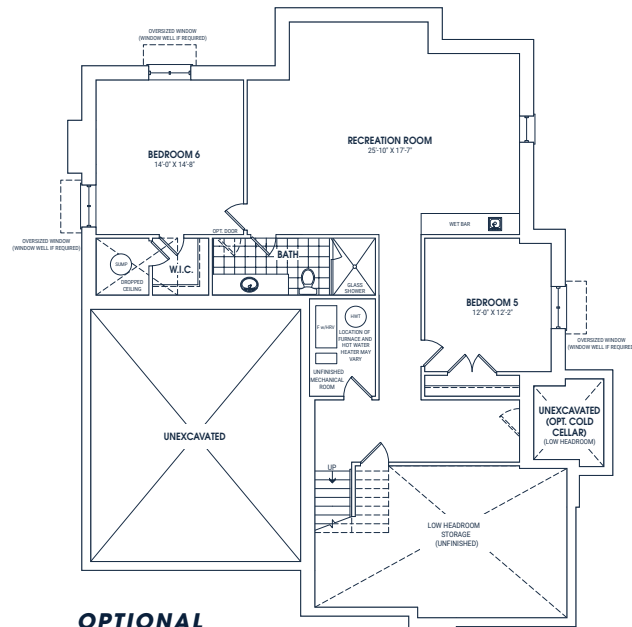
OPTIONAL SECOND FLOOR TERRACE



SECOND FLOOR PLAN ELEVATION A



BASEMENT PLAN ELEVATION A



OPTIONAL BASEMENT PLAN ELEVATION A

GONDOLA - 60 - 11

3,859 SQ.FT. 4-6 BEDROOM

It doesn't get much grander than a private courtyard in the centre of your home. The wrap-around layout of the house offers a large two storey lodge room which overlooks the rear yard and front courtyard with its indoor/outdoor fireplace. The second storey features three bedrooms and three bathrooms.



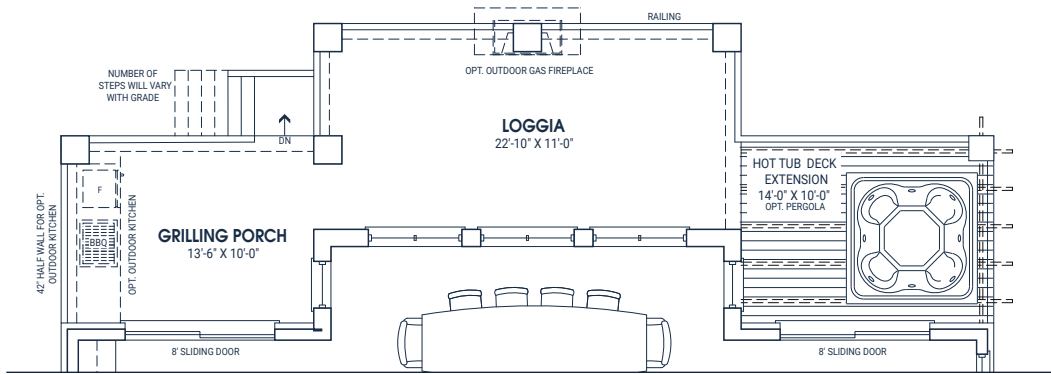
ELEVATION B



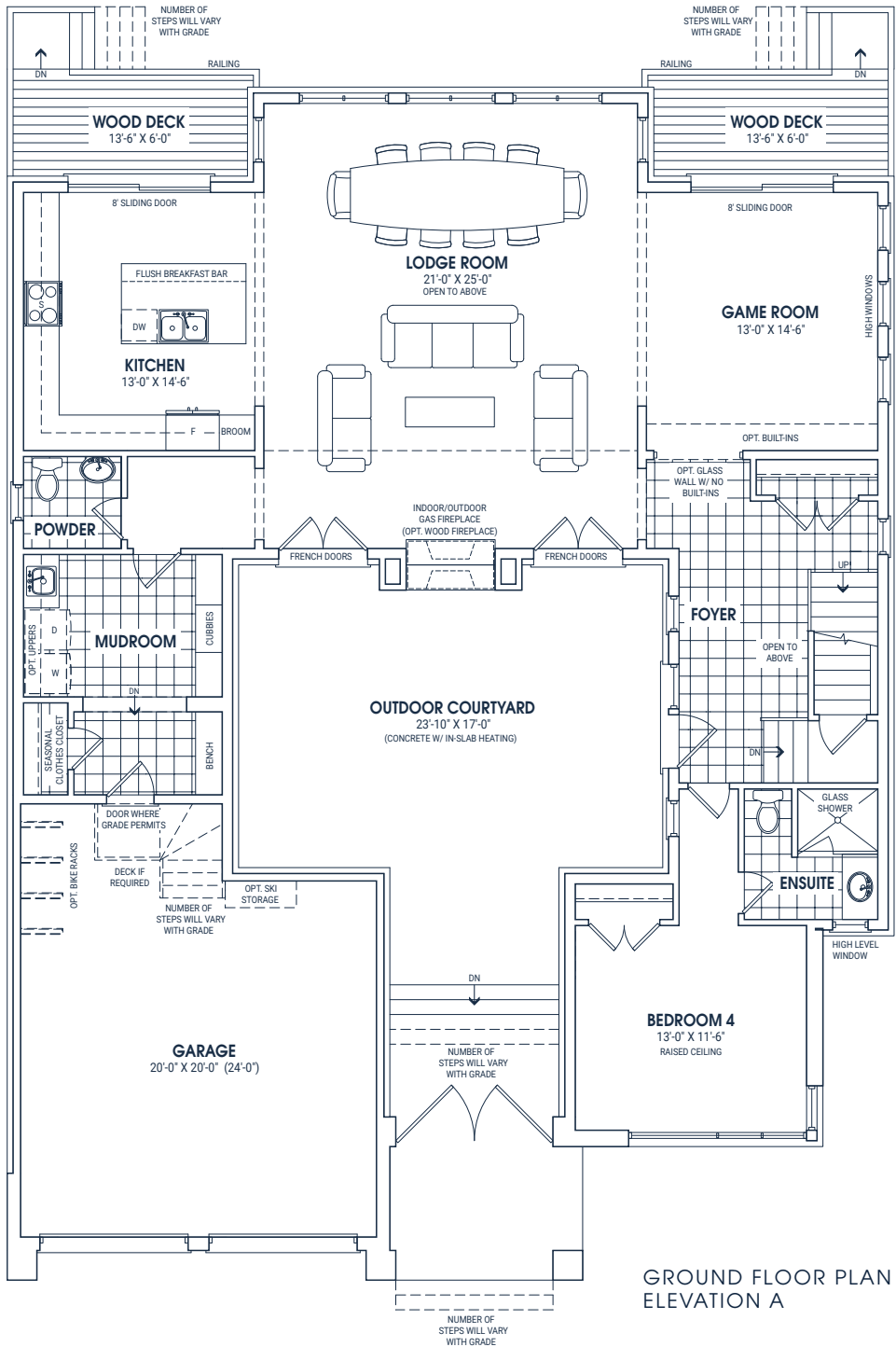
ELEVATION C



ELEVATION A

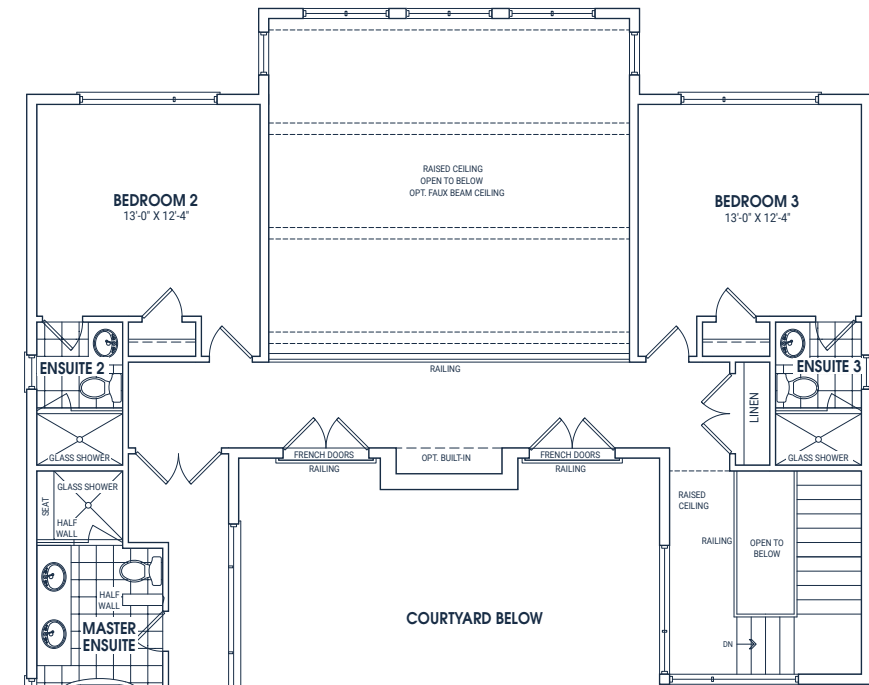


OPTIONAL DECK EXTENTION & LOGGIA

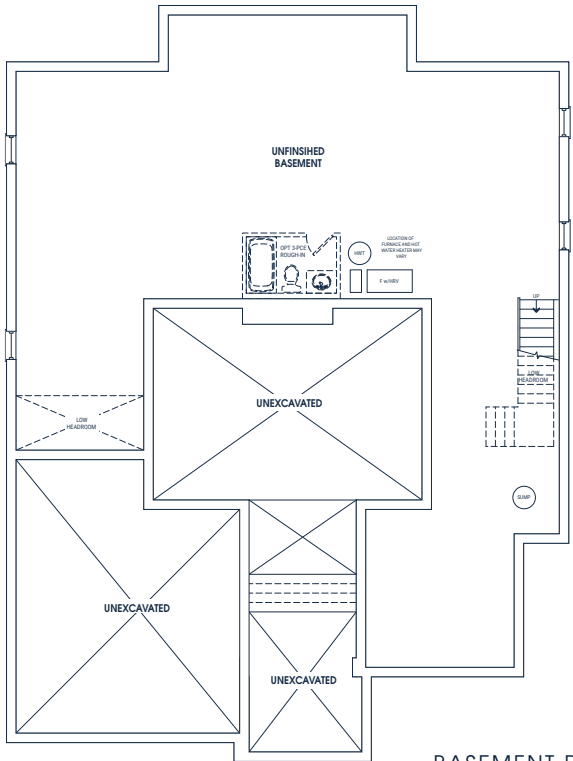


GROUND FLOOR PLAN ELEVATION A

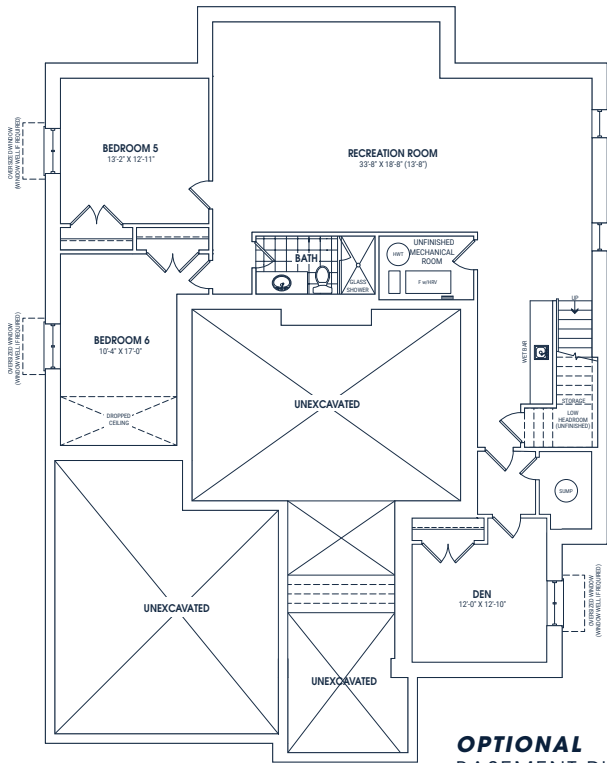
GONDOLA - 60 - 11



SECOND FLOOR PLAN ELEVATION A



BASEMENT PLAN ELEVATION A



OPTIONAL BASEMENT PLAN ELEVATION A

MOGUL - 60 - 12

4,535 SQ.FT. 4-6 BEDROOM

The custom floor plan for the largest 12 lots at Blumont is the epitome of luxury and refinement. The master bedroom is located on the first floor, and a central floating staircase, which stands before the two storey lodge room, takes you upstairs where you will find three more bedrooms, along with a games room and an option for an additional bedroom and ensuite.



ELEVATION A

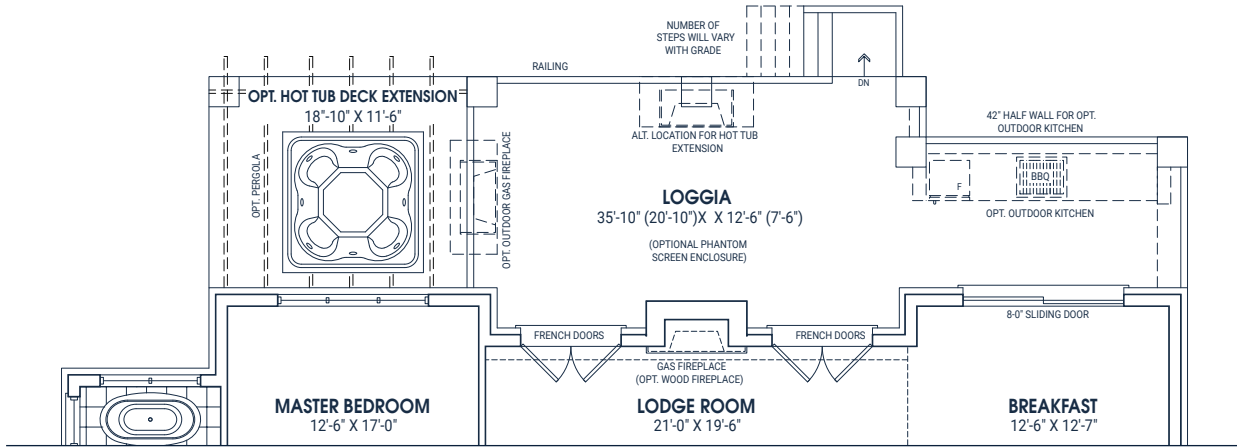


ELEVATION B

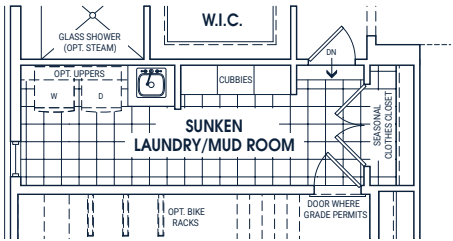


ELEVATION C

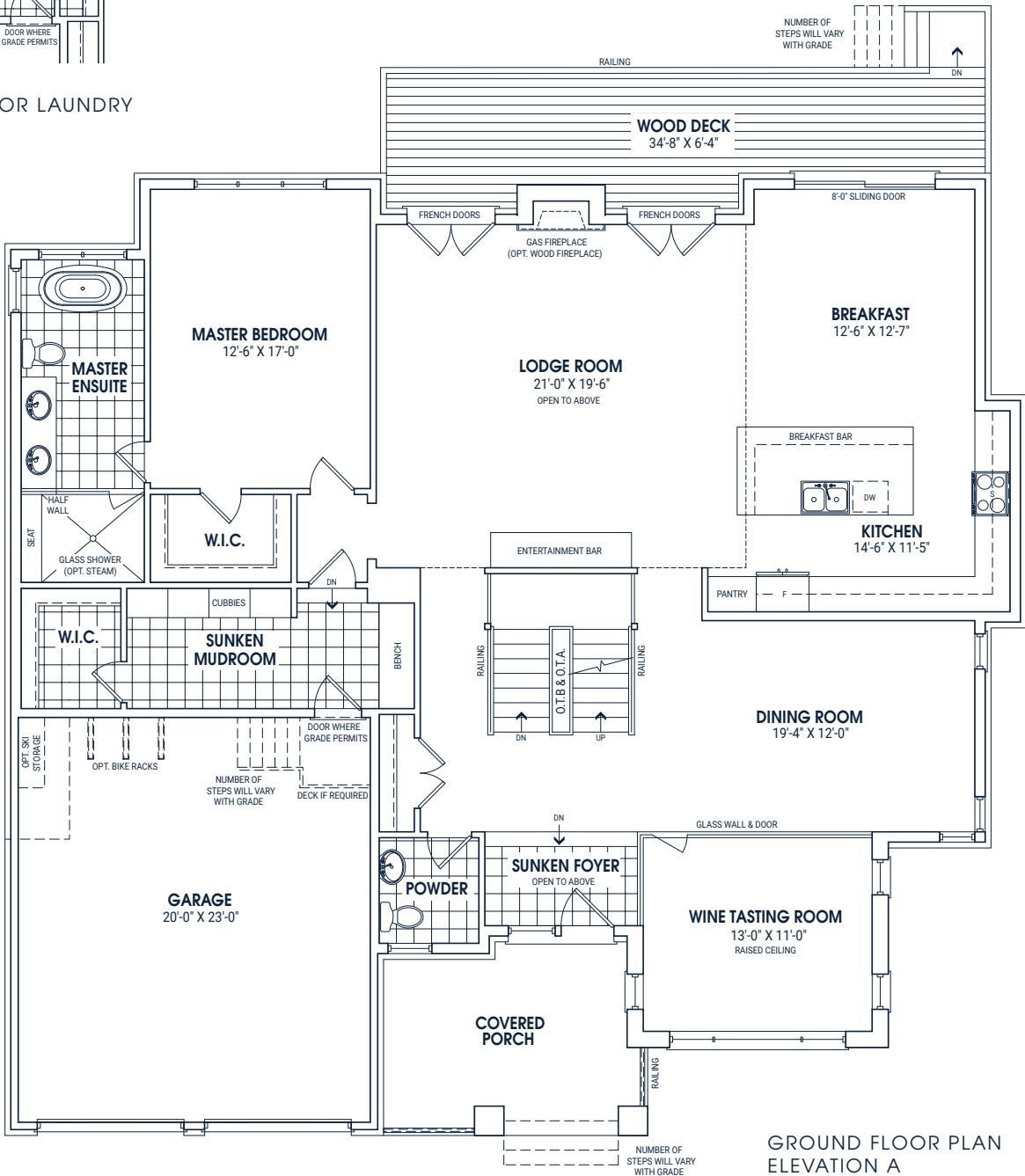
Plan is not to scale and all illustrations are artist concept only. Dimensions, specifications, layout and materials are approximate only and are subject to change without notice. The patterns may vary. Window size and location may vary. Actual usable floor space may vary from stated floor area. Builders are required for mechanical purposes such as kitchen and bathroom exhausts and heating and cooling ducts have not been indicated. Electrical loadings and sizes vary per floor. Furniture and stairs shown are displayed for illustration purposes only and are not included in the square footage. Stairs are solid unfinished. © 2022.



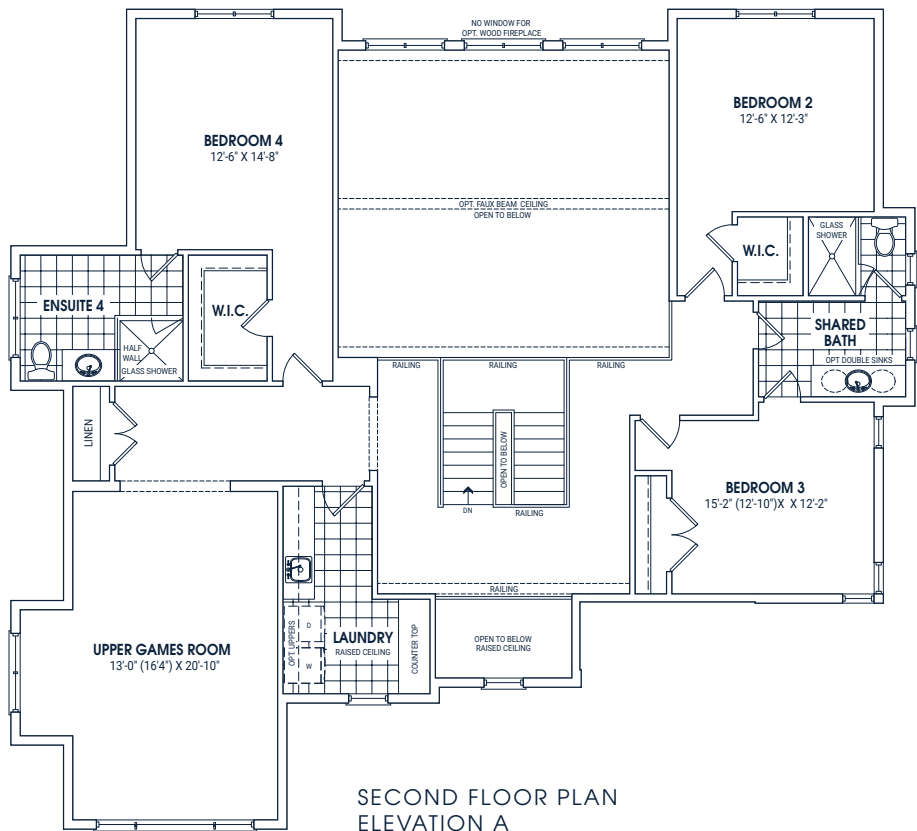
OPTIONAL DECK EXTENTION & LOGGIA



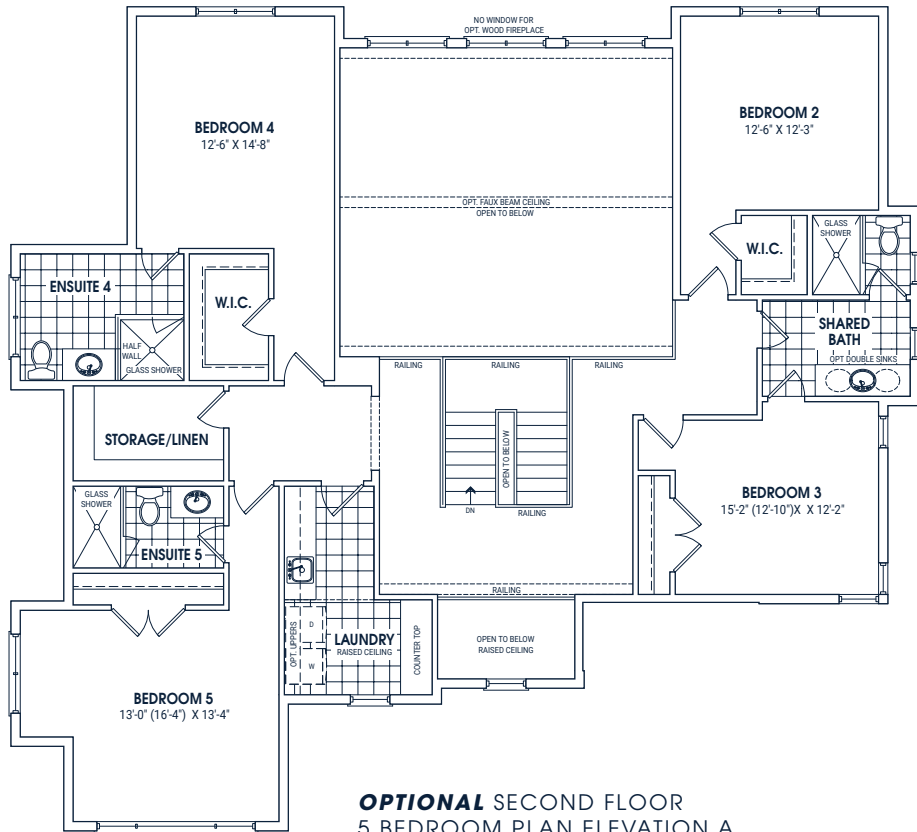
OPTIONAL GROUND FLOOR LAUNDRY



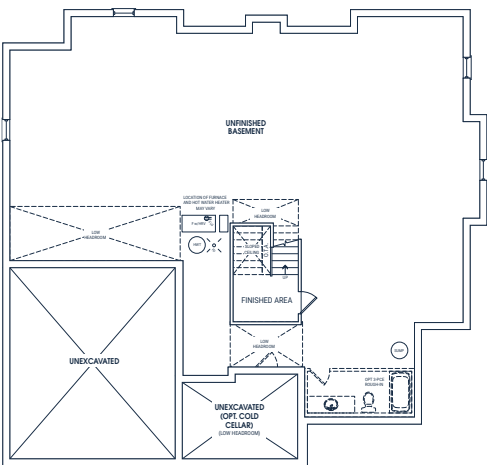
GROUND FLOOR PLAN ELEVATION A



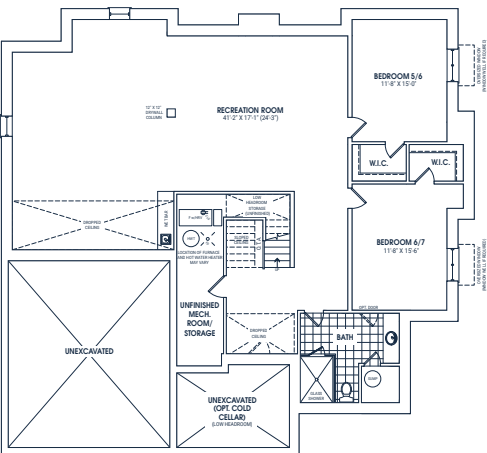
SECOND FLOOR PLAN ELEVATION A



OPTIONAL SECOND FLOOR 5 BEDROOM PLAN ELEVATION A



BASEMENT PLAN ELEVATION A



OPTIONAL BASEMENT PLAN ELEVATION A

