



linX
CONDOMINIUMS

YOUR LINX TO

...

CONNECTED TORONTO LIVING

At LINX, we're bringing connected condominium living to a neighbourhood that puts the subway, streetcar and GO Transit at your door. It's a home that connects you to all the best the city has to offer like never before.

Ari Zadegan Group
Realtyari@toronto.com
416-618-0188

YOUR LINX TO

...

THE CITY'S BEST TRANSIT AT YOUR DOOR

Step out your front door and take your pick from all three of Toronto's public transit systems. Get around the city on your own terms when you live at LINX.

TRANSIT SCORE

97

Ari Zadean Group
Realtyari@torontolinx.com
416-618-0188



*Source: walkscore.com

SUBWAY

Travel with ease on the Bloor-Danforth subway line. Just 12 minutes to Yonge & Bloor Station.



STREETCAR

The 506 Streetcar can take you from your door on Main Street across the heart of the city. Ride the Rocket to Yonge & College in about 25 minutes.



GO TRAIN

Danforth GO Station is your rapid rail connection to the wider GTA, with trains coming in 30 minutes or less all day. Travel to Union Station in just 14 minutes.



YOUR LINX TO

...

A TASTE OF DANFORTH



LINX lets you live just minutes to the iconic Greektown section of Danforth Avenue. Take your pick of popular eateries reflecting the cuisines of Greece, Canada and many other parts of the world. Enjoy contemporary Greek cuisine at Estiatoria VOLOS, or try a wide range of delicacies at Mezes. Pantheon and Athens are both great choices for a classic souvlaki. P&M Restaurant and Mama's Boys Burgers are two options that offer both Greek and Canadian menu selections. Every August, you'll also be able to enjoy the Taste of the Danforth Festival, a 3 day street festival incorporating delicious food, live entertainment and more. Of course, life on Danforth is about more than just great food, you can also explore charming boutiques and shops such as Social Butterfly, Erietta Boutique, Tibet Shoppe, The Big Carrot and more.





5 MINS

**TO GREEKTOWN
SHOPS &
RESTAURANTS**



YOUR LINX TO

...

LIFE BY THE LAKE

The Beach is another amazing neighbourhood just minutes from LINX. Take the Main Street streetcar south to Queen Street East to discover the warm atmosphere of a beachside town right in the heart of the city. Excellent local shopping includes Our Cottage home decor, The Embellished Room women's clothing and Urban Rider motorcycle outfitters. There's also trendy local dining with The Stone Lion Gastropub, Sauvignon Bistro & Bakery and more. One particularly neat destination for families is Eve and Olivia's Cafe + Play, which offers a play area for the kids, family-friendly classes, and a cafe area for parents. The annual Jazz Fest is also a favourite for music lovers from across the city and beyond!



Ari Tadeo Real Estate Group
416-618-0188
torontoluxuryhomez.com





20+

PARKS AND NATURAL SPACES NEARBY



YOUR LINX TO

...

URBAN PARKS & NATURE

Great outdoor times are never far away when you call LINX home. Play softball at Ted Reeve Baseball Park, or indoor soccer at Monarch Park Stadium. Take the TTC south to beautiful Woodbine Beach. Spend your days walking or relaxing in numerous local parks. It's all here at LINX!

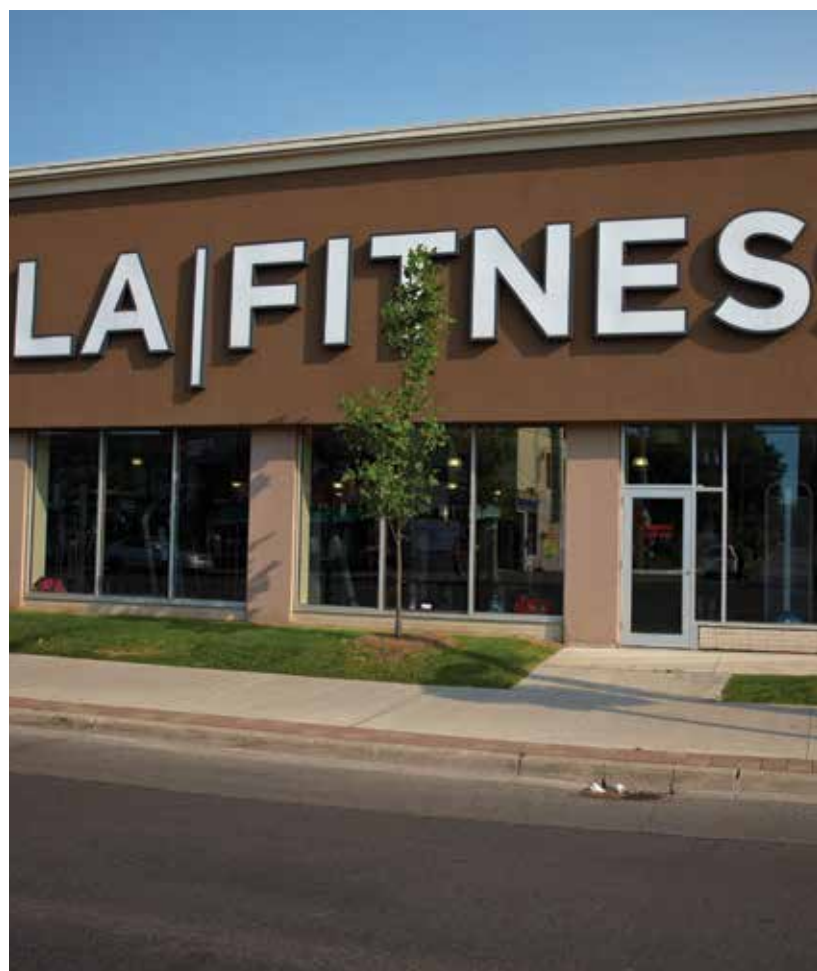
YOUR LINX TO

...

EVERYDAY ESSENTIALS



Convenient shopping is always close at hand with local boutiques and everyday essentials available at Metro, Loblaws, Sobeys, Canadian Tire and Lowe's all just steps away. Local shopping is just the beginning here though. You are always just a quick transit ride away from all of the city's most loved shopping destinations. Use the subway to get to Eaton Centre in 25 minutes, Yorkville Village in 15 minutes and Yorkdale Shopping Centre in 45 minutes.





3 MINS

TO BIG BOX
RETAIL



YOUR LINX TO

...

SLEEK MODERN DESIGN

The captivating design of LINX will create a new landmark in Toronto's east end. This signature tower has been crafted to reflect a timeless yet modern aesthetic. Clean lines, large windows and a unique geometry all combine to make this a place you'll be proud to call home.



ARTIST'S CONCEPT



Legal Group @toronto.luxuryhomez.com

ARTIST'S CONCEPT

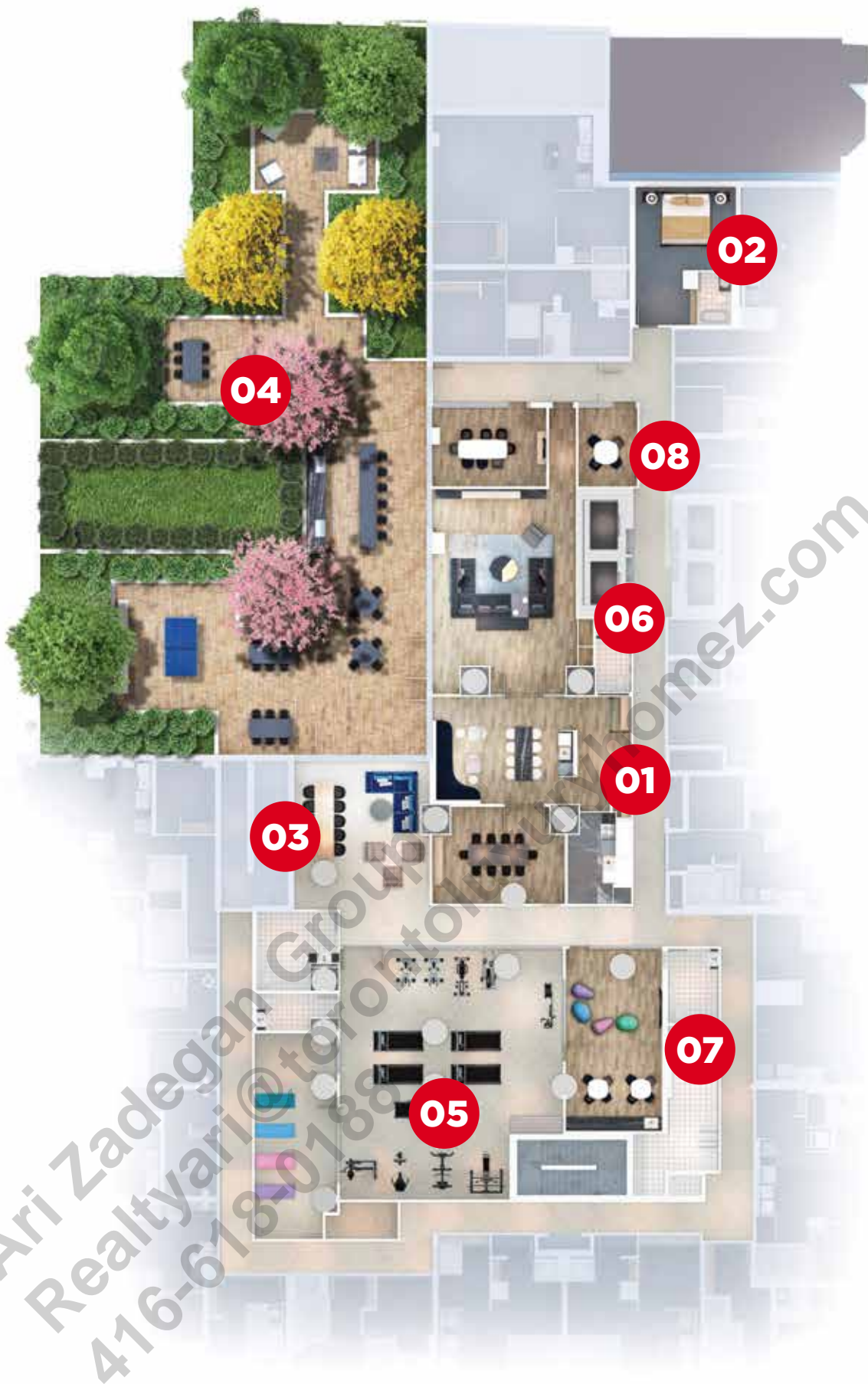
YOUR LINX TO

...

COMPLETE LIFESTYLE AMENITIES

LINX comes fully-loaded with stylish and functional amenities spaces. A sleek lobby will be the perfect place to welcome your guests. The party room will make you wish the good times will never end. A large outdoor terrace will be your favourite hangout for summer barbecues and cocktails. The fitness centre will keep you feeling great all year long, and the media room is waiting any time you want to host a movie or big game night.





- 01** PARTY ROOM
- 02** GUEST ROOM
- 03** TECH LOUNGE
- 04** OUTDOOR TERRACE
- 05** FITNESS/YOGA CENTRE
- 06** RESIDENTS LOUNGE
- 07** KIDS ZONE
- 08** STUDY ROOM

YOUR LINX TO

...

A TRUSTED GTA BUILDER



Founded over 35 years ago, Tribute Communities is a Builder/Developer who has built more than 35,000 new homes and condominiums with a mission to create distinctive, visionary communities across Southern Ontario. The company's reputation has been earned through their architecturally distinct and exquisitely designed homes and condominiums ideally situated amongst the very finest streetscapes and communities. Beautifully appointed homes with many unique features and classic finishes that result in eminently liveable environments – that is the Tribute ideal. Our condominiums are expressions of a vibrant urban ethos, with iconic architecture, sophisticated designs and inspired lifestyle amenities. Whether living in an exquisite Tribute single family home or an elegant Tribute condominium, our customers can be sure of one thing: their home has been built by passionate people who truly care about bringing dreams to life. Some of our recent successes include Y & S Condominiums at Yonge and Soudan, Stanley Condominiums at Church and Carlton and Max Condominiums near Church and Dundas.



Greybrook Realty Partners is a Toronto-based asset management firm that invests equity in large-scale real estate development and value-add projects. Alongside its network of leading North American developer partners, Greybrook is responsible for building and shaping communities across Canada and the United States.

Greybrook has developed a strong reputation for its ability to create value for its investors, partners and communities. Ranging from single-family homes, condominiums and purpose-built rental, to ultra-luxury condominium residences and retail, Greybrook's diversified real estate portfolio includes investments in more than 70 projects that represent in aggregate over 35 million square feet of residential and commercial density, with an estimated completion value of \$15 billion.



YOUR LINX TO

...

PROGRESSIVE DESIGN



TURNER FLEISCHER

As one of Canada's most progressive architectural firms, Turner Fleischer has led the way in delivering standout projects and adopting technological advances that drive exemplary, creative solutions. Based in Toronto, and celebrating 45 years in business, our diverse service portfolio includes residential, commercial, office, urban mixed-use, food service, retail and industrial designs, as well as experience working with highly complex, historically significant properties. This range of specialties has enabled a command of municipal and provincial approvals, and the overarching ability to get projects built. The Turner Fleischer team consists of approximately 150 committed and creative professionals. We believe that an integrated approach of internal disciplines on a project has proven to be the best methodology for delivering creative, efficient solutions. Our experience speaks for itself, with decades of completed projects in the residential sector.

P | D | S

THE PATTON DESIGN
STUDIO

Patton Design Studio is a creative team of interior designers that have worked with developers and private residential clients for over 30 years. Our studio continues to create elegant, timeless spaces in both high rise and low rise developments as well as private city and country residences in Canada and abroad.

The Patton Design Studio is not tied to a signature style. Diversity continues to challenge our creative interpretation to reflect our clients' needs and aspirations. It is by combining the old and the new, foreign and familiar that we find inspiration that is relevant to all of our design and marketing work.

guidelines
advertising inc.

At Guidelines, we help many of the GTA's most prominent and respected real estate developers create fresh, exciting brand identities and marketing campaigns. We believe that selling to the heart is more effective than selling to the head, and we have the results to prove it. Based on knowledge, professionalism and trust, President Vince Casali and the entire Guidelines team always go the extra mile to cultivate enduring client relationships. Many clients have been with us for decades, and we have been honoured to grow along with their successes. By incorporating strategic planning, compelling design and dynamic communication we produce signature creative marketing products that consistently generate real value for our clients.

Tribute
communities

OVER
35
YEARS

g™ Greybrook
Realty Partners
Asset Management & Advisory Services

LINXCONDOS.COM