



THE SAINT

FIND YOUR CENTRE.

Ari Zafar Group Realtyari@toronto.com 416-618-0188

CENTRED IN DESIGN.

The Saint is a manifestation of the future, a centre of well-being, and a shining testament to ingenuity and forward thinking.



THE CENTRE OF THE CITY



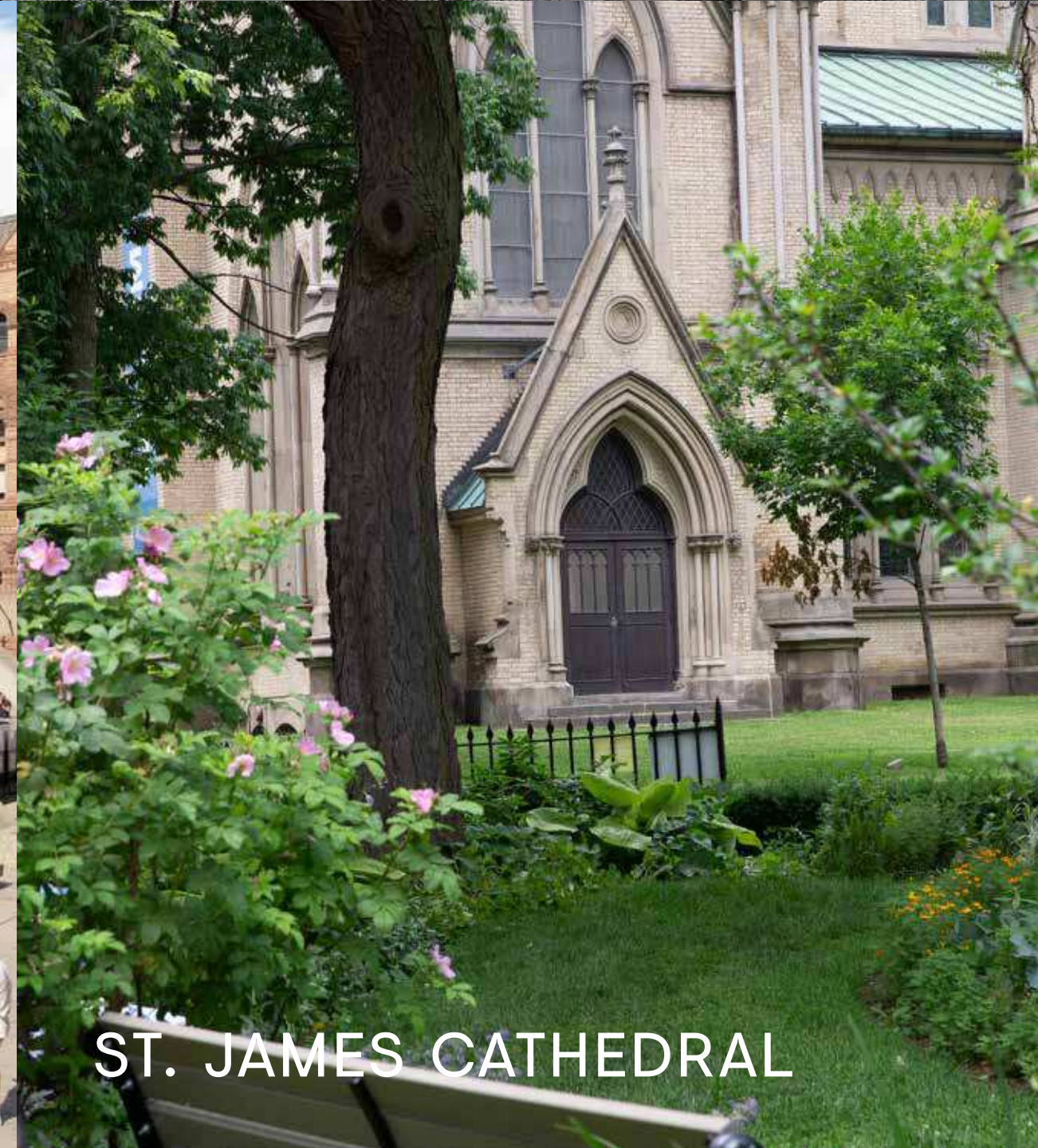
GOODERHAM BUILDING



DUNDAS SQUARE



CITY HALL



ST. JAMES CATHEDRAL



CITY HALL



FINANCIAL DISTRICT



SUBWAY



BROOKFIELD PLAGE



ST. JAMES PARK



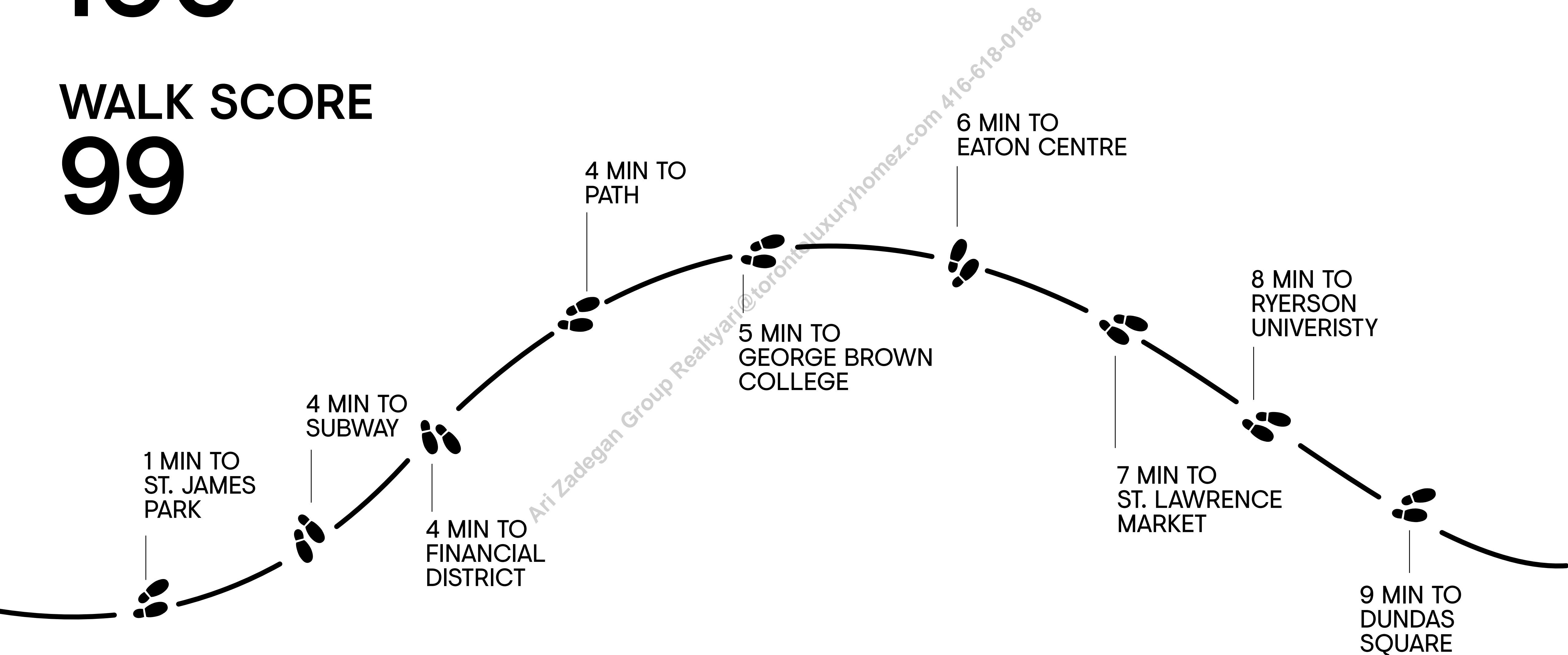
ST. LAWRENCE MARKET

TRANSIT SCORE
100

WALK SCORE
99

WALK EVERYWHERE

WALK TIMES FROM THE SAINT





WALLMAN ARCHITECTS

Wallman Architects (WA) is a Canadian architectural office dedicated to producing exceptional design. Drawing on the experience of a practice that began in 1985, Rudy Wallman established WA in 2006. Since then, WA has developed an extensive portfolio of remarkable mixed-use, residential, hospitality, institutional and urban design projects across Canada and around the world.

Wallman offers in-depth partner involvement during design and municipal approvals and is recognized for its ability to operate within demanding bureaucratic and political environments. Working collaboratively, the team of experienced professionals ensures the successful completion of all project phases from design to construction, within the client's budget and timelines. Wallman values the long-term relationships that have developed with clients, consultants, contractors and co-workers.

Each commission enriches the lives of its occupants, is environmentally sustainable and embodies a unique design vision. Wallman embraces the complexities of architectural practice and seeks to unlock its potential to enhance the value of the built environment.



THOMPSON DOREMAN SWEATMAN LLP



COCA-COLA

FIGUR3

Allan Guinan, Caroline Hughes and Chris Wright founded figure3 in 1995, with a design vision and a philosophy that still grounds who the company is today. The trio instinctively understood that it was essential to be able to combine robust strategic planning with a considered creative vision to deliver superlative spaces for clients.

Today, figure3 has grown into a 60+ strong studio filled with a mix of talents, backgrounds, and specialist skills from strategy and design researchers to industrial designers to graphic brand and textile experts who complement and amplify figure3's core interior design expertise.

The multi-disciplinary nature of the firm was codified from day one with a client mix that included corporate workplaces and retail design and would subsequently expand to include residential development.

The firm champions an approach that seeks to understand the people it is designing for before rushing to design solutions.

THE SAINT HIGHLIGHTS

47
STOREY
BUILDING

416
SUITES

SQ. FT.
408 SQ. FT. TO
1,500 SQ. FT.

**JUDO
WATER
FILTRATION
SYSTEM**

10%
STUDIO

20%
1 BED

30%
1 BED + DEN

30%
2 BED

10%
3 BED



**PREMIUM FINISHES
ADD LUSTRE AND
LONGEVITY.**

KITCHEN





KITCHEN



LIVING / DINING



BEDROOM



BATHROOM

THE AMENITIES

DEDICATED TO HEALTH AND WELLBEING, THE SAINT'S AMENITIES ARE GROUNDBREAKING.

Grand 2-storey lobby with 24 hour concierge and residents' lounge.

Exclusive rooftop lounge featuring party and games rooms, and outdoor space.

State of the art fitness, yoga, and spin studios.

Over 10,000 SQ. FT. of amenity space dedicated to wellness. Includes salt and meditation rooms, spa experience including infrared sauna, rain rooms, and treatment rooms.





LOBBY



GRAND LOUNGE

Group Property Toronto@torontoproperty.com 16-618-0188

SPA ROOM

Ari ZadeGAN Group Realtyari@torontojxuryhomez.com 416-618-0188



A modern rain room with a waterfall wall, wooden slat walls, and two illuminated tables. The room features a ceiling with a circular light fixture and a wooden slat wall. The floor is made of dark wood. The text "RAIN ROOM" is visible in the bottom left corner.

RAIN ROOM



SALT ROOM



Ari Zadeqan Group Realty Inc. | TorontoLuxuryHomez.com | 416-618-0188

FITNESS ROOM



YOGA ROOM



CO-WORKING LOUNGE

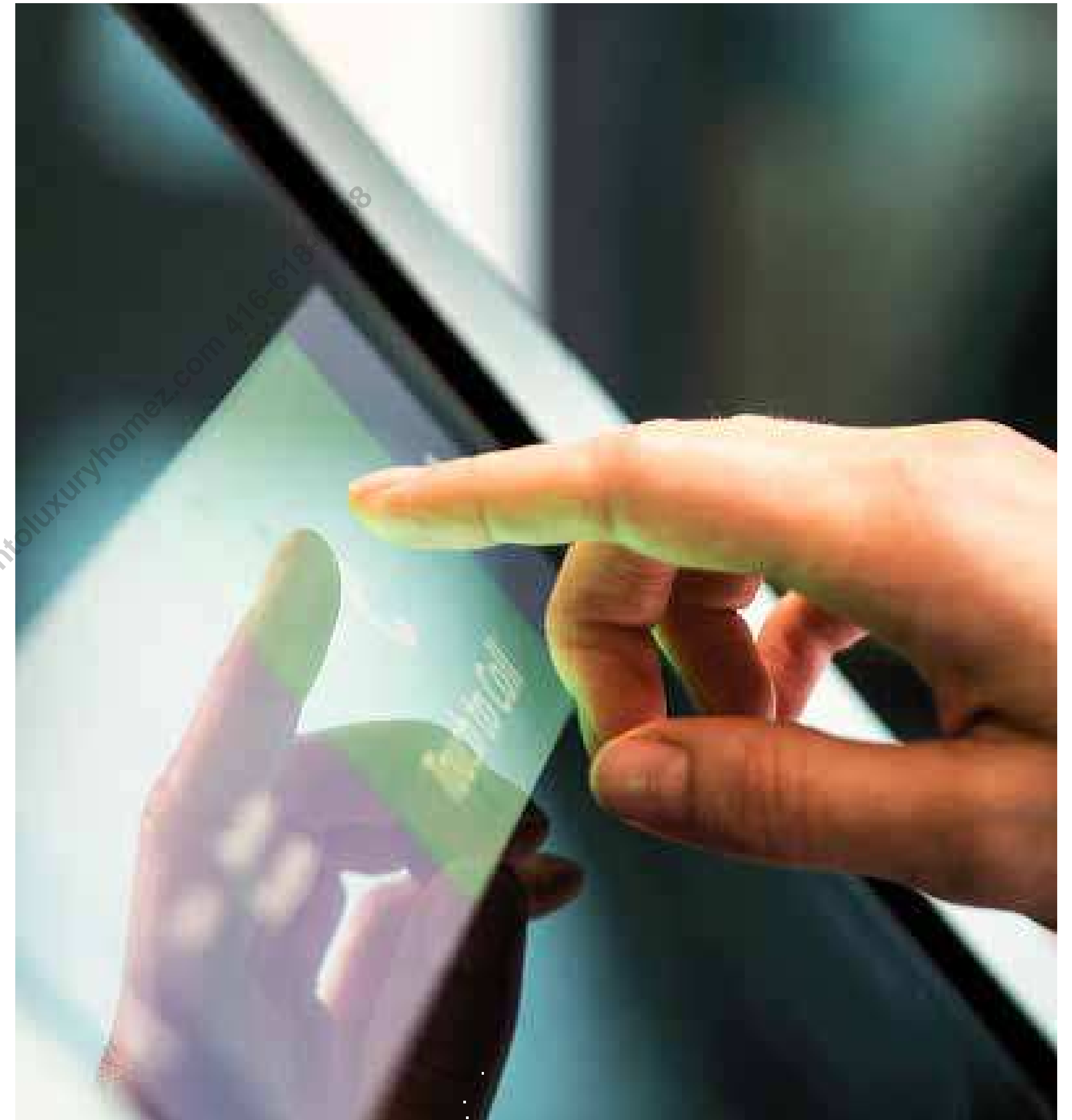
DINING SPACE



Minto Intelligence

AT THE SAINT, EVERY DETAIL HAS BEEN CAREFULLY CONSIDERED AND DESIGNED TO STREAMLINE YOUR LIFE. MINTO INTELLIGENCE (MI) IS A FEATURE-RICH SMARTHOME PACKAGE THAT PUTS CONTROL AT YOUR FINGERTIPS. SIMPLY DOWNLOAD THE APP TO YOUR SMARTPHONE OR TABLET, AND ACCESS ALL OF THESE FEATURES:

- Phone & email concierge
- Get amenity hours
- Book & reserve amenities
- Automated parcel system notifications
- Adjust suite temperature
- Messages from concierge/property management
- View building CCT video
- Lock & unlock your door
- Open common area doors
- Pre-register guests
- Enter garage without FOB



SOUTH VIEW



NORTH VIEW



luxuryhomez.com 416-618-0188

Ari ZadeGAN Group Realtyari@torontoluxuryhomez.com 416-618-0188

THANK YOU

[K u - z u : i a n]
REAL ESTATE

 **minto**
Communities



aRi
expect more

ARI ZADEGAN
BROKER OF RECORD

What could your home sell for
in Today's Market?

RE/MAX
HALLMARK ARI ZADEGAN GROUP REALTY
RAISING THE BAR

D 416.489.4287 | C 416.618.0188
Ari@TorontoLuxuryHomez.com | TorontoLuxuryHomez.com