

TRIDEL®
BUILT FOR LIFE

FIRST
CAPITAL®

EDENBRIDGE™

KINGSWAY

TOWNHOMES

Modern Heritage

For those who believe in the value of showcasing the most cherished design and architectural elements of the 20th century in contemporary residences. For anyone who appreciates how the design of the past can be manifested in the newest, most captivating designs of today, we present Modern Heritage.

While paying tribute to the past and building on its triumphs, Modern Heritage is a unique style in its own right. Elegant. Classic. Upscale. Always carefully executed from a source of infinite creativity.



Edenbridge Site Plan

- 1 Main Entrance
- 2 Parking Entrance
- 3 Townhome Private Outdoor Space
- 4 Outdoor 8th Floor Amenity
- 5 Outdoor English Garden
- 6 Retail
- 7 Townhomes





EXTERIOR AND FRONT ENTRANCE

*Edenbridge address, 255 The Kingsway subject to change.



Architecture in Context

A handsome, modern building that seamlessly blends into The Kingsway, Edenbridge is designed by Tridel.

Great care has been taken to ensure Edenbridge speaks to the context of its setting, with shapes, colours, textures and heights that are supremely pleasing to the eye. The colour palette and materials used are reminiscent of many of the homes and shops built in The Kingsway area in the 1920s and 1930s in the Arts & Crafts style. Stone, brick, and crystalline glass create a unique look that extends into the brilliant future while paying tribute to the most treasured architectural movements of the early 20th century.

Ground Floor Amenity Plan

- 1 Main Entrance
- 2 Concierge
- 3 Lobby Lounge
- 4 Mail Room
- 5 Parcel Room
- 6 Elevators
- 7 Lounge
- 8 Dining Room with Terrace
- 9 Bar/Lounge
- 10 Fitness Centre
- 11 Yoga Studio
- 12 Saunas
- 13 Indoor Pool & Whirlpool
- 14 Outdoor English Garden
- 15 Private Residential Terrace
- 16 Property Management Offices
- 17 Boardroom







INDOOR POOL AND WHIRLPOOL



FITNESS CENTRE





PARTY ROOM LOUNGE



PARTY ROOM BAR

8th Floor Amenity Plan

- 1 Private BBQ Areas with Dining & Lounge
- 2 Private Lounge Areas
- 3 Private Seating







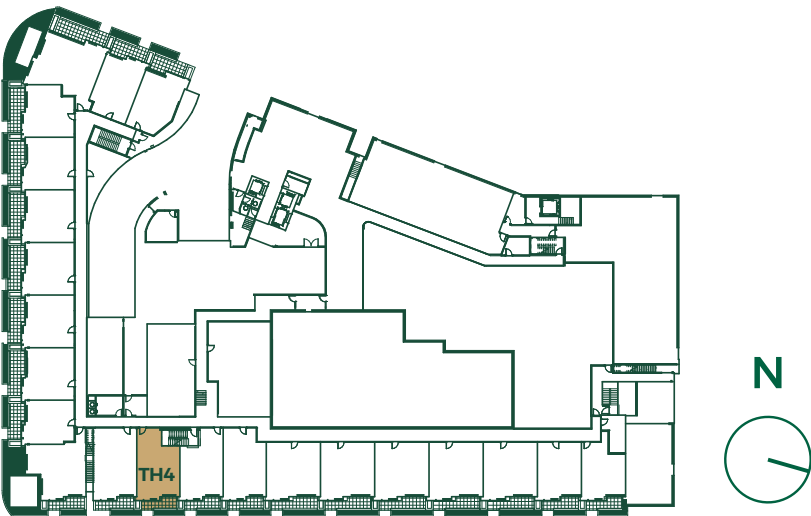
EDENBRIDGE™
KINGSWAY

Townhomes

TOWNHOME 4

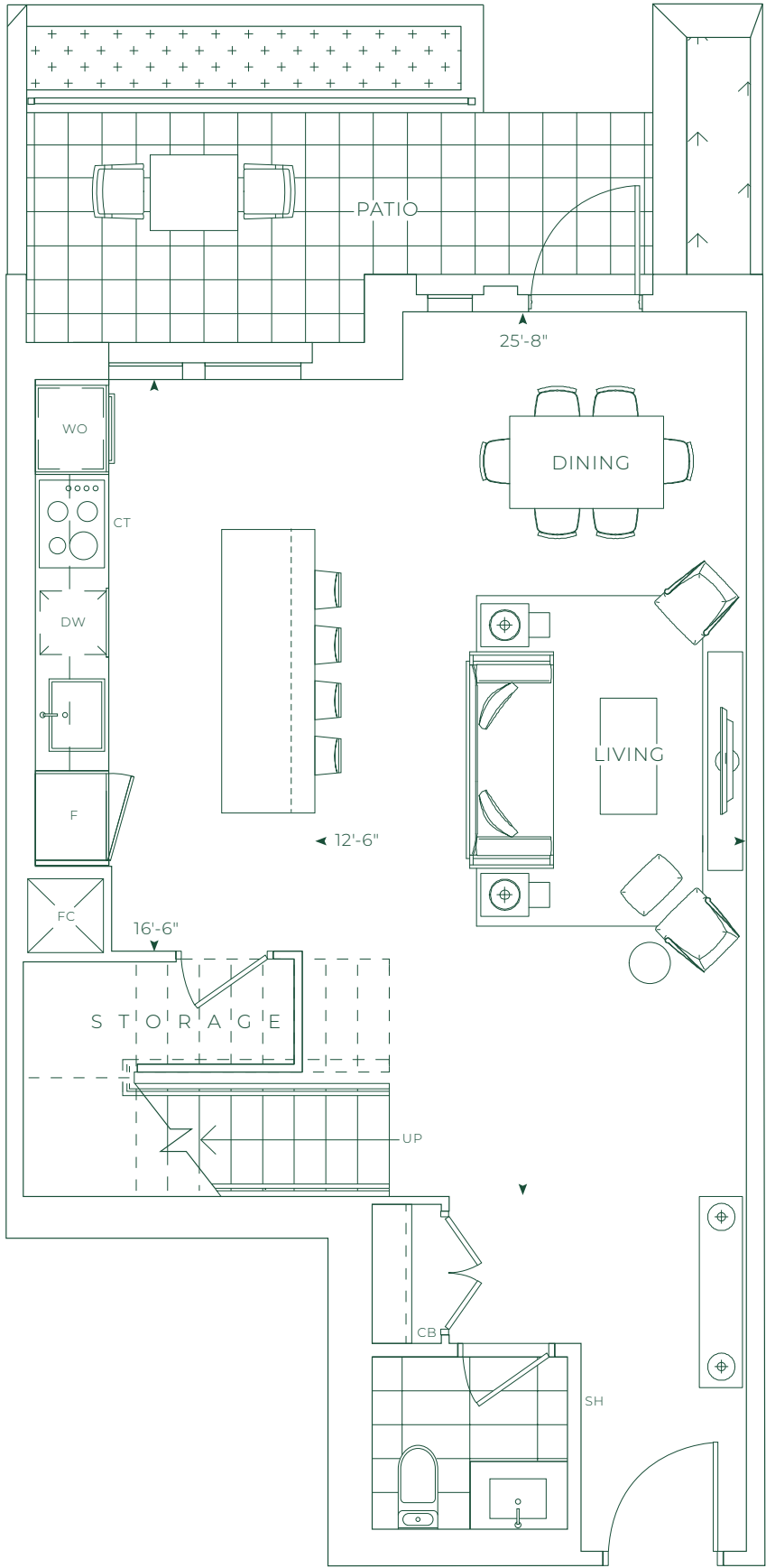
1,430 SQ.FT.

2 BEDROOMS, 2.5 BATHROOMS

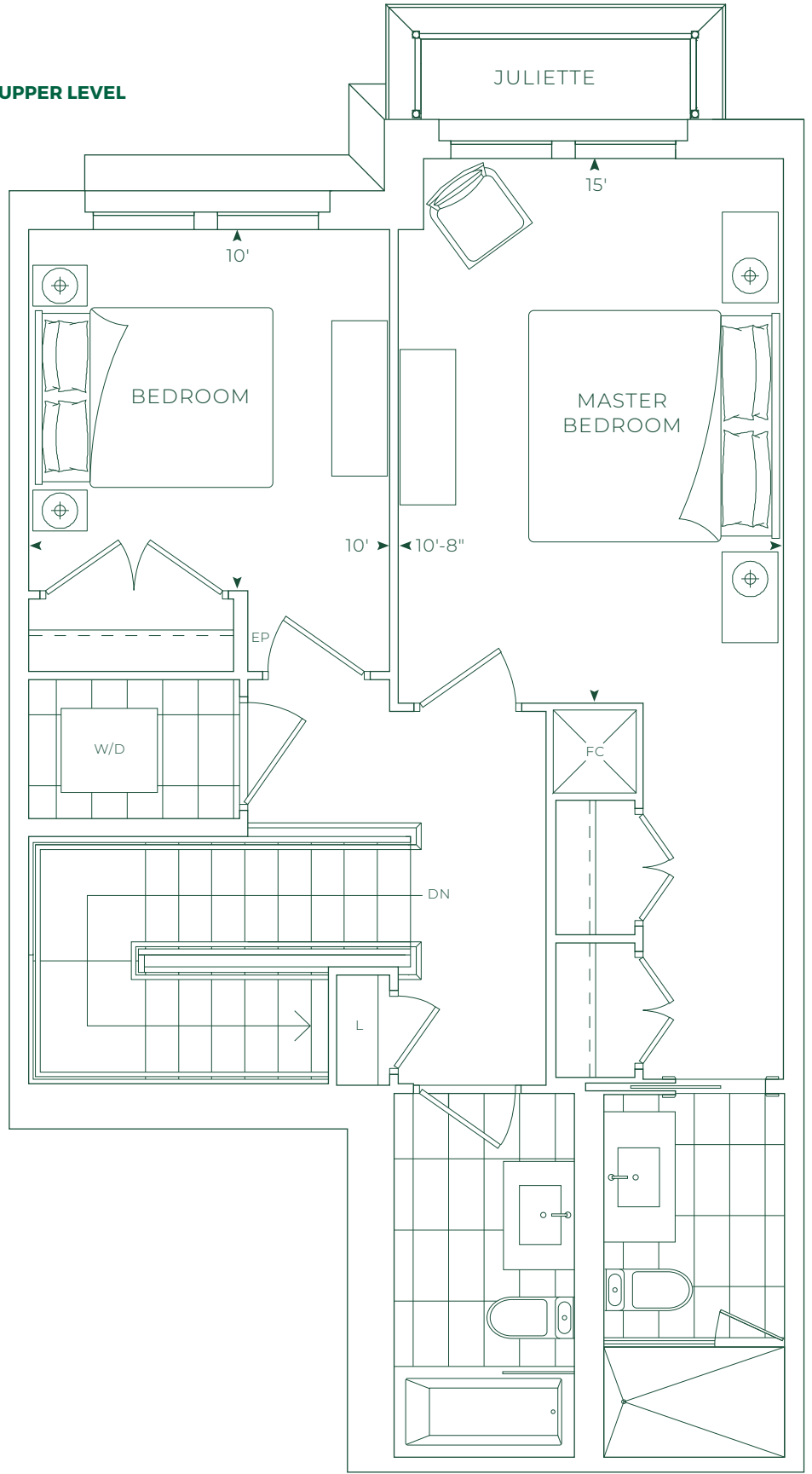


GROUND FLOOR

LOWER LEVEL



UPPER LEVEL

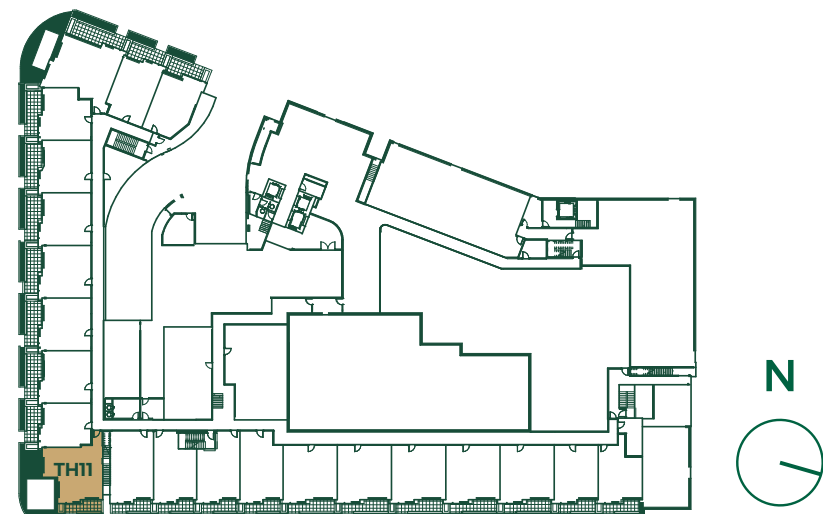


© Tridel 2019. ® Tridel, "D" design, Tridel Built for Life, Tridel Built for Life Design, and Tridel Built Green Built for Life are registered Trademarks of Tridel Corporation. Project names and logos are Trademarks of their respective owners. All rights reserved. Building and view not to scale. All dimensions are approximate and subject to normal construction variances. Dimensions may exceed the usable floor area. Some features and finishes herein are upgrades or are for illustrative purposes only and may not be available. Furniture is displayed for illustrative purposes only and does not necessarily reflect the electrical plan for the suite. Suites are sold unfurnished. Balcony, terrace and facade variations may apply, contact a sales representative for further details. Furniture, BBQs and planter locations on balcony/terraces are for illustration purposes only and subject to change. Illustrations are artist's concept only. Sizes and specifications subject to change without notice. E. & O.E. June 2019.

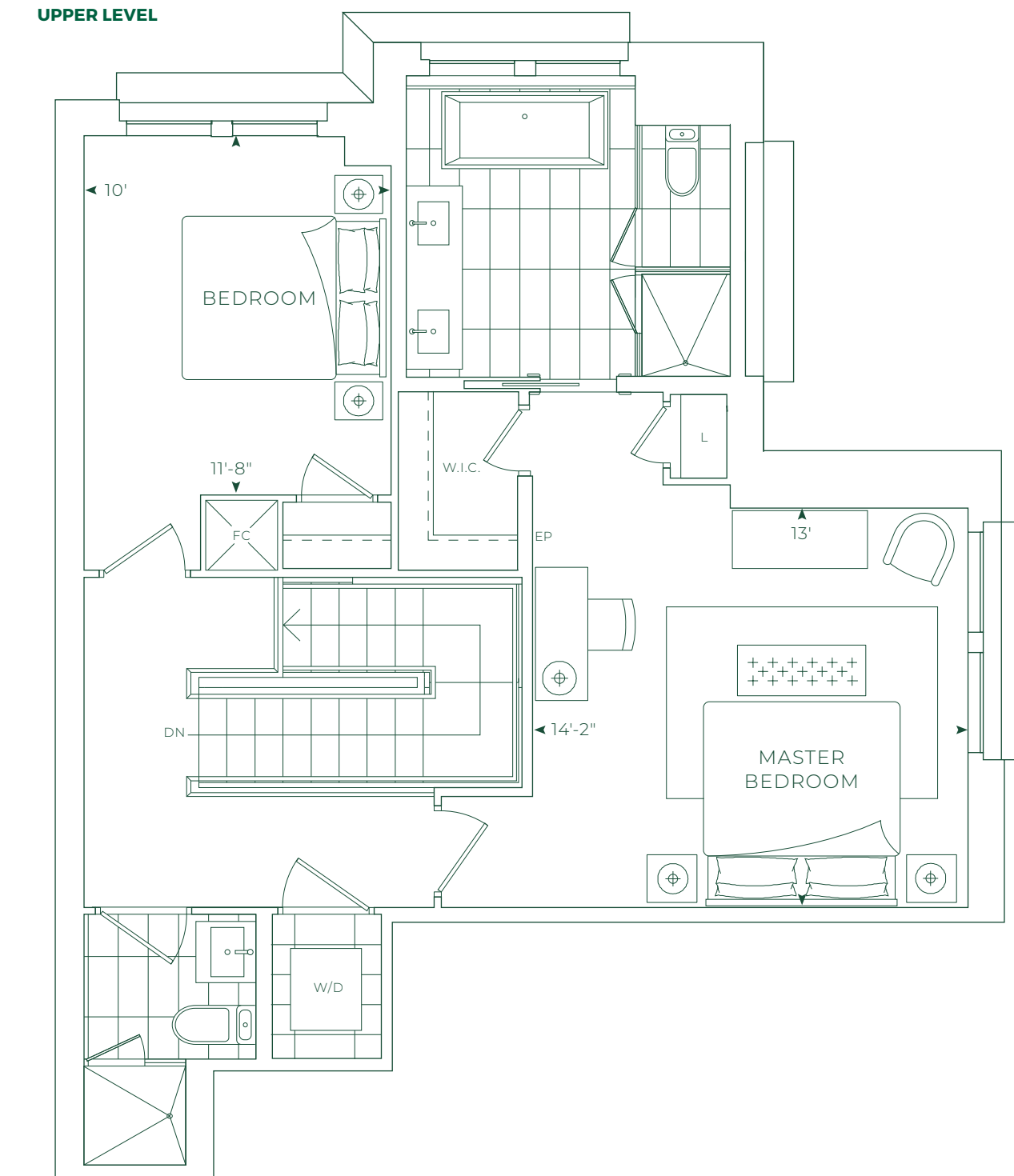
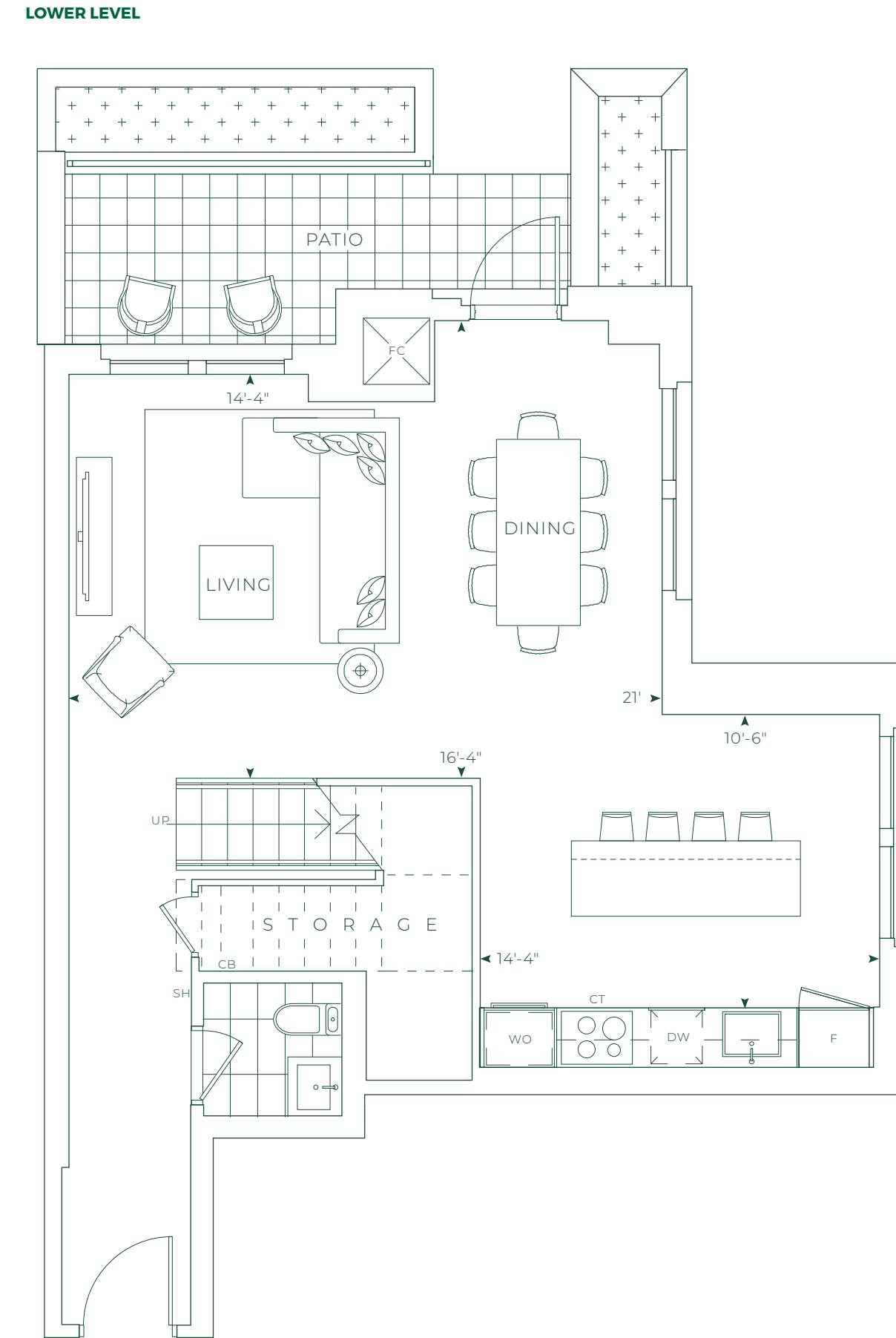
TOWNHOME 11

1,660 SQ.FT.

2 BEDROOMS, 2.5 BATHROOMS



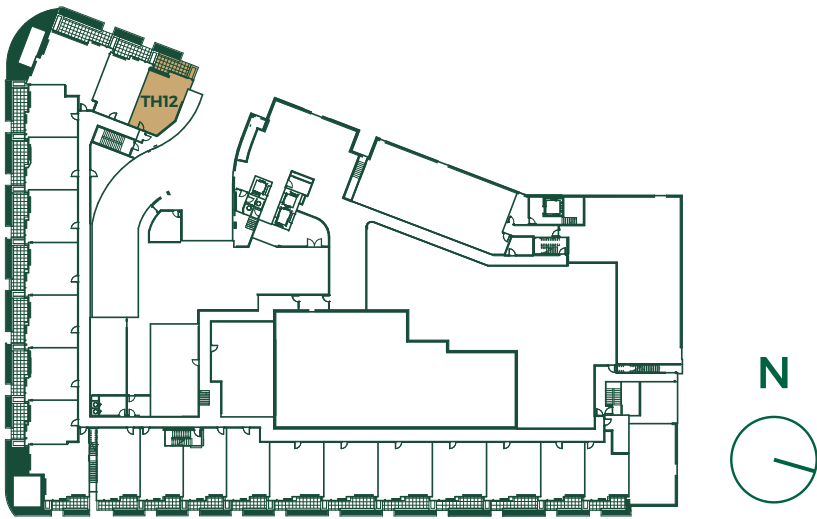
GROUND FLOOR



Townhome 12

1,800 SQ.FT.

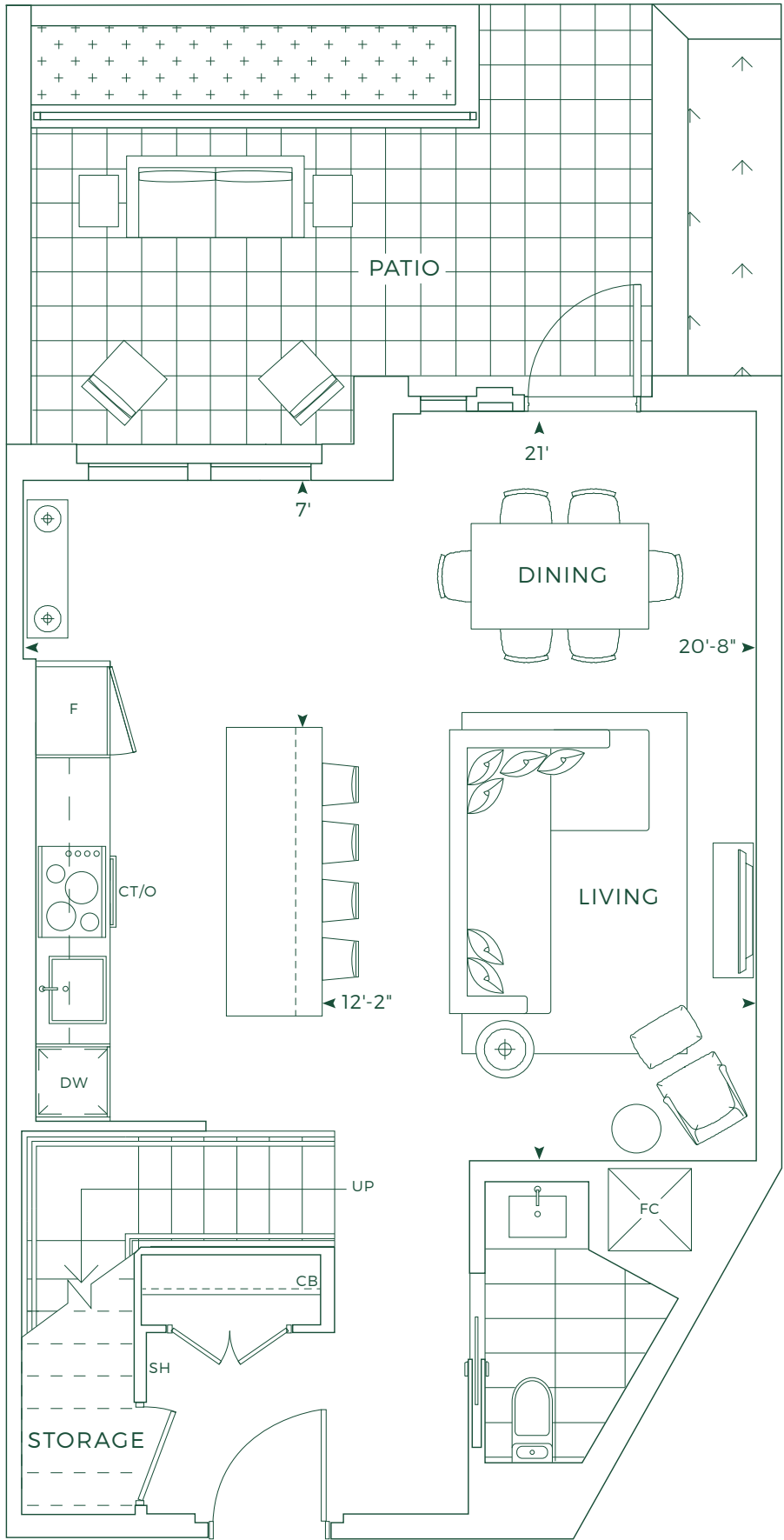
2 BEDROOMS + DEN, 2.5 BATHROOMS



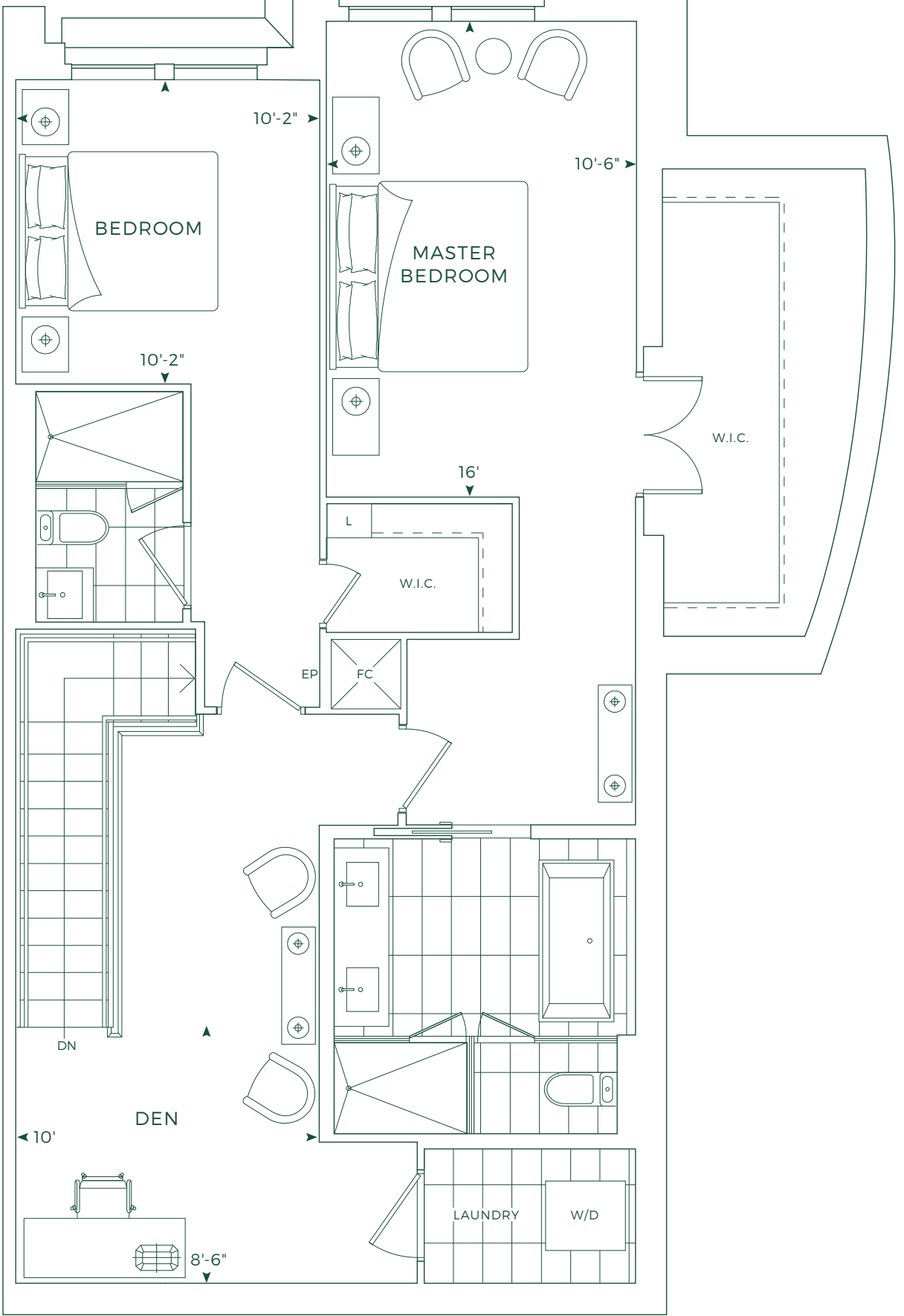
GROUND FLOOR

© Tridel 2019. ® Tridel, "D" design, Tridel Built for Life, Tridel Built for Life Design, and Tridel Built Green Built for Life are registered Trademarks of Tridel Corporation. Project names and logos are Trademarks of their respective owners. All rights reserved. Building and view not to scale. All dimensions are approximate and subject to normal construction variances. Dimensions may exceed the usable floor area. Some features and finishes herein are upgrades or are for illustrative purposes only and may not be available. Furniture is displayed for illustrative purposes only and does not necessarily reflect the electrical plan for the suite. Suites are sold unfurnished. Balcony, terrace and landscape variations may apply; contact a sales representative for further details. Furniture, BBQs and planter locations on balcony/terraces are for illustration purposes only and subject to change. Illustrations are artist's concept only. Sizes and specifications subject to change without notice. E. & O.E. June 2019.

LOWER LEVEL



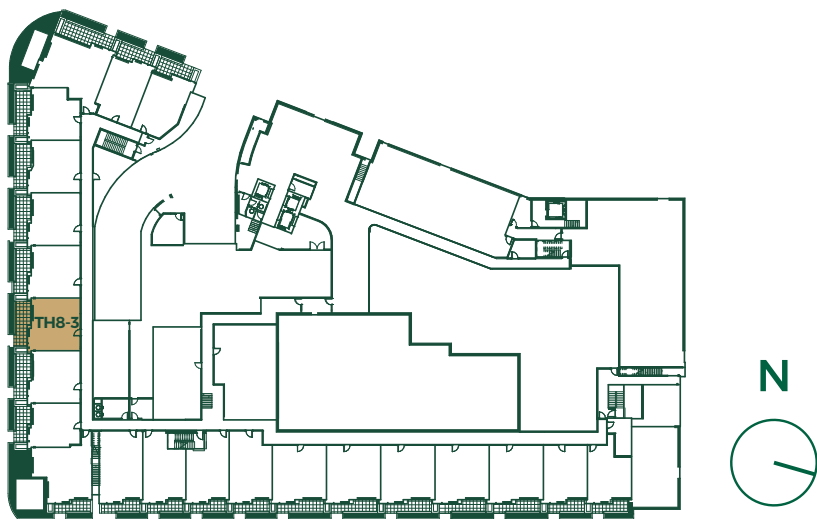
UPPER LEVEL



TOWNHOME 8-3

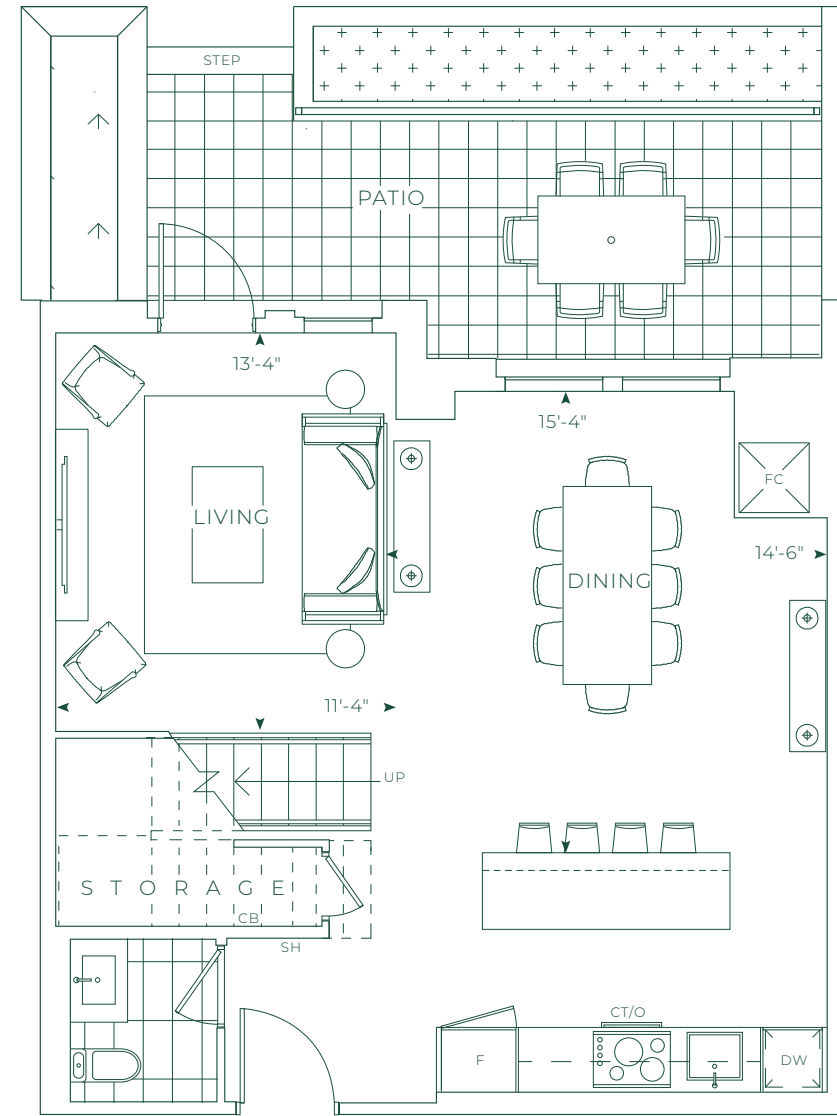
1,620 SQ.FT.

3 BEDROOMS, 2.5 BATHROOMS

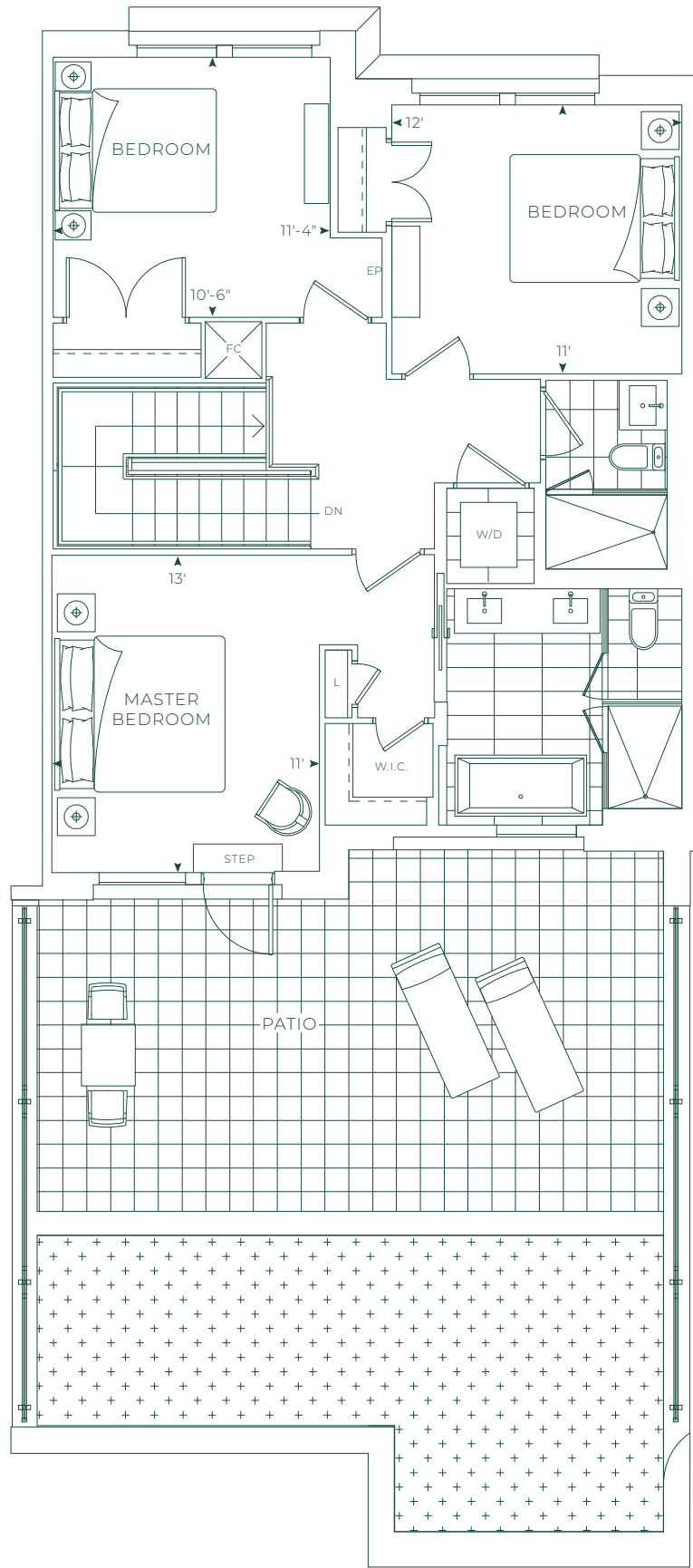


GROUND FLOOR

LOWER LEVEL



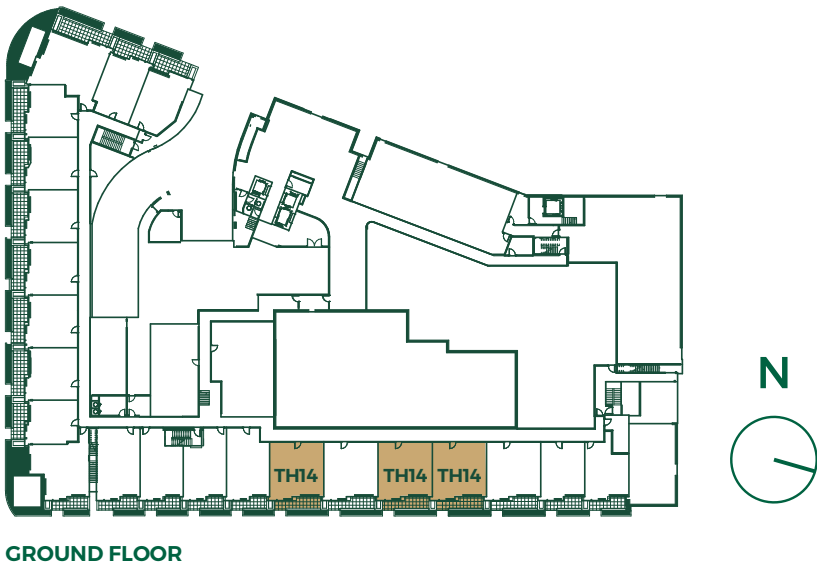
UPPER LEVEL



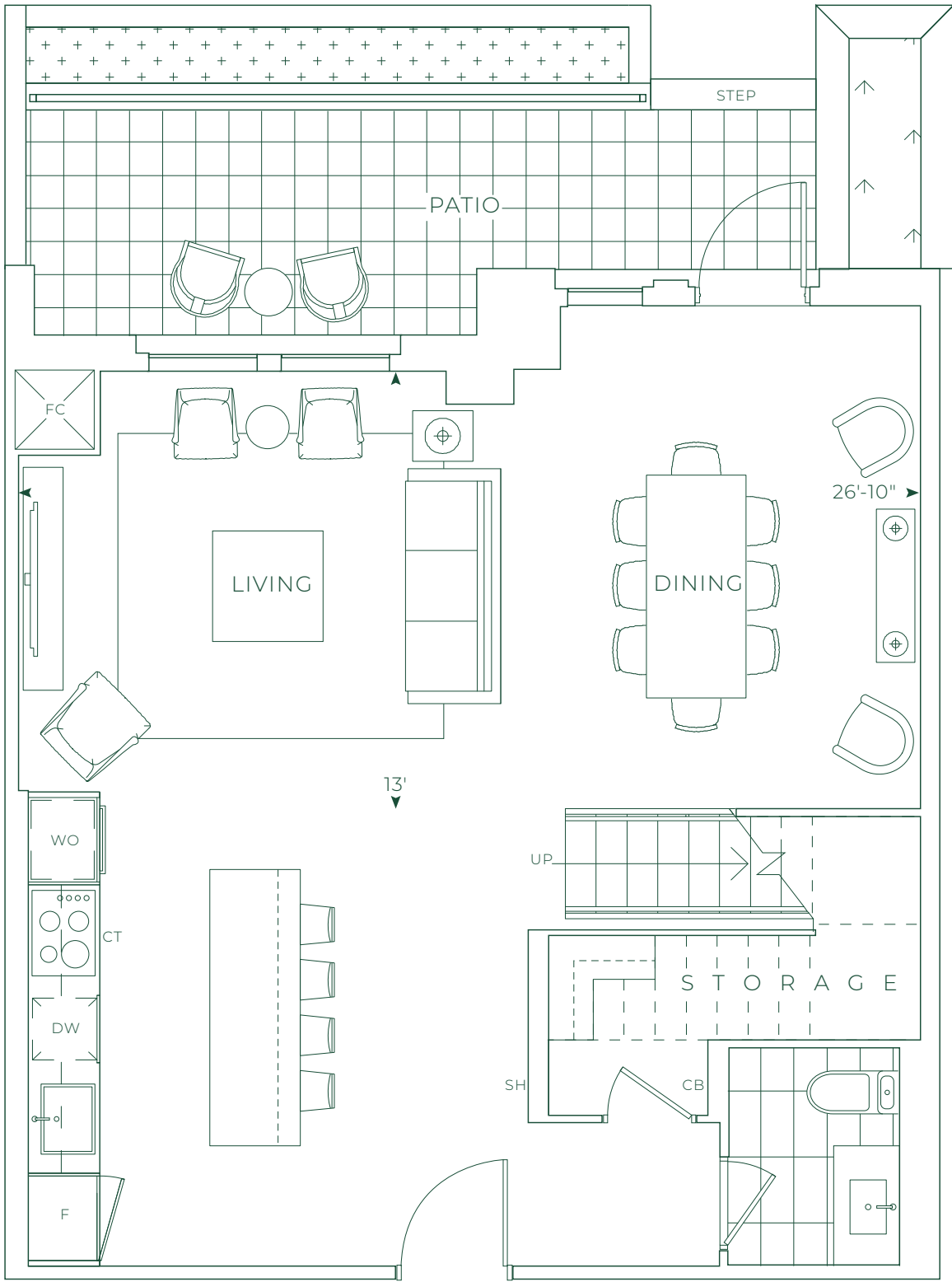
Townhome 14

1,820 SQ.FT.

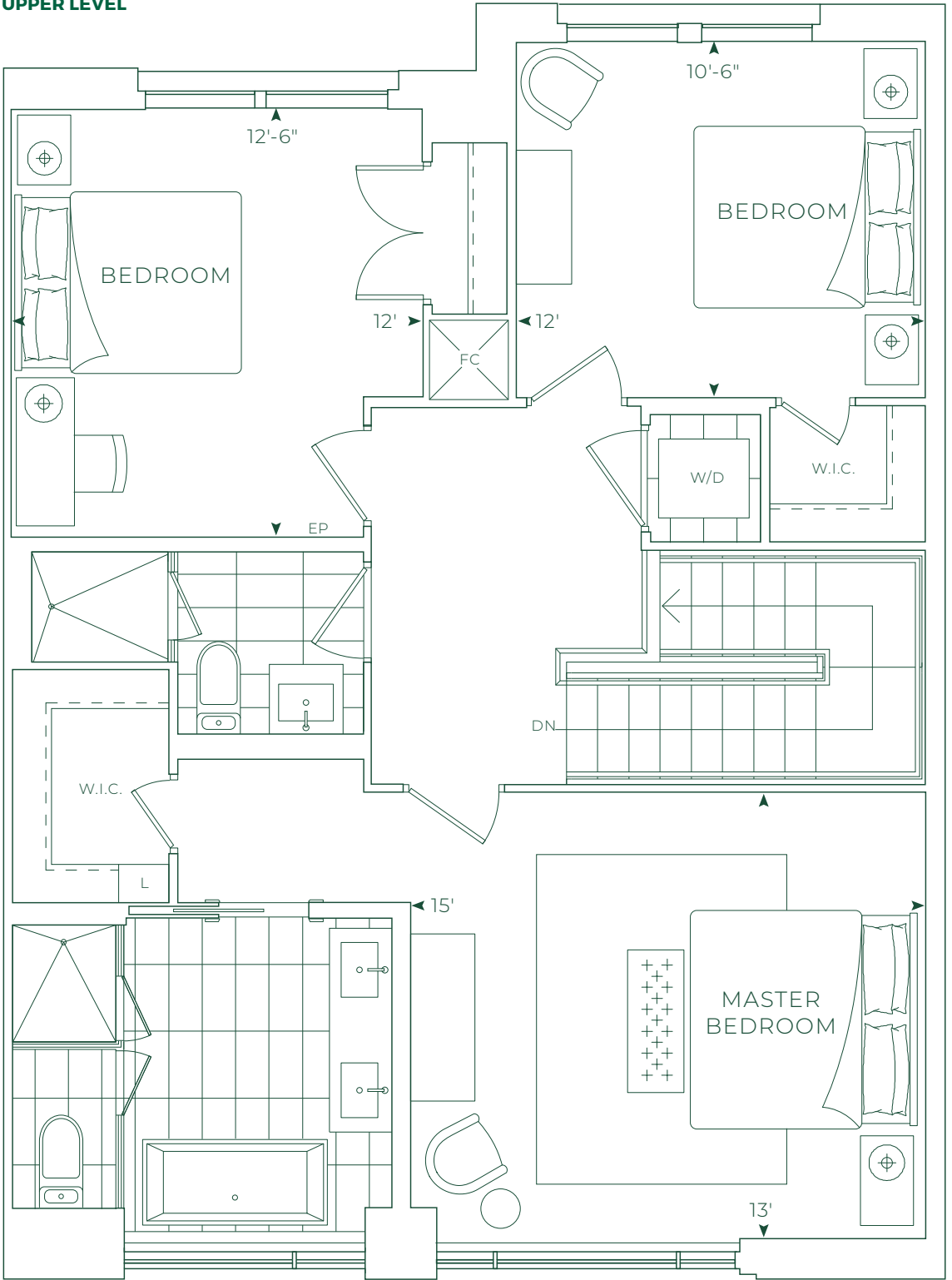
3 BEDROOMS, 2.5 BATHROOMS



LOWER LEVEL



UPPER LEVEL



© Tridel 2019. © Tridel, "D" design, Tridel Built for Life, Tridel Built for Life Design, and Tridel Built Green Built for Life are registered Trademarks of Tridel Corporation. Project names and logos are Trademarks of their respective owners. All rights reserved. Building and view not to scale. All dimensions are approximate and subject to normal construction variances. Dimensions may exceed the usable floor area. Some features and finishes herein are upgrades or are for illustrative purposes only and may not be available. Furniture is displayed for illustrative purposes only and does not necessarily reflect the electrical plan for the suite. Suites are sold unfurnished. Balcony, terrace and facade variations may apply, contact a sales representative for further details. Furniture, BBQs and planter locations on balcony/terraces are for illustration purposes only and subject to change. Illustrations are artist's concept only. Sizes and specifications subject to change without notice. E. & O.E. June 2019.



TOWNHOME KITCHEN



TOWNHOME LIVING AREA



TOWNHOME COLLECTION

Features & Finishes

Rich materials and thoughtful details evoke a sense of timeless elegance in every space within your Edenbridge townhome. Luxury appliances provide a chic, innovative counterpoint. Your home makes lavish use of natural materials to create a stunning environment. Natural stone, quartz, and wood grace the interiors, an interplay of the sleekly modern with the treasured traditional.

Throughout your home, engineered hardwood flooring adds to the feeling of a luxurious retreat. In the kitchen, double square edge natural stone or engineered quartz countertops and fully integrated Miele® refrigerator and dishwasher ensure convenience and efficiency as well as beauty. And in your bathroom the glass-enclosed shower or soaker tub help instill a feeling of peace and relaxation.

Spacious walk-in closets, chrome faucets in the kitchen and bathrooms, and contemporary style interior doors with coordinated hardware further convey the impression of utmost comfort and elegance.

